

**FEAL**

**PROIZVODI**  
*PRODUCTS*



*Tvrtka FEAL d.o.o. iz Širokog Brijega prisutna je na tržištu više od 40 godina te ima dugu tradiciju u preradi aluminija.*

SPECIJALIZIRANI SMO za projektiranje aluminijskih sistema i daljnju preradu aluminija, od same ideje do finalnog proizvoda. Proizvodi koje nudimo tržištu su razne vrste aluminijskih konstrukcija koje se koriste u građevinarstvu i industriji. Svoj razvoj temeljimo isključivo na stvaranju vlastitog stručnog tima koji prati svjetske trendove u projektiranju i nudi kompletna rješenja za proizvodnju aluminijskih sistema. Aluminijski profili i sistemi svojim dizajnom mogu biti prilagođeni specifičnim potrebama klijenata u arhitekturi (fasade, prozori, vrata..) i industriji.

POSEBAN DIO naše ponude po kojem je tvrtka prepoznatljiva na tržištu čine: sistemi za graditeljstvo, sistemi koji su razvijani unutar kuće FEAL, a svoju primjenu mogu naći u različitim izvedbama modernog graditeljstva. Suvremenim opremanjem postrojenja za ekstrudiranje

aluminija, elektrostatsko plastificiranje i anodno eloksanje, kao i strojevima za obradu aluminijskih profila uspješno odgovaramo stalnim promjenama dinamičnog i zahtjevnog tržišta. U cijelom proizvodnom lancu koristimo modernu tehnologiju i sredstva zaštite te vršimo stalnu kontrolu prema zahtjevima norme ISO14001:2015, koja je jamac naše brige za okoliš.

POSJEDUJEMO CERTIFIKATE ISO 3834 i EN 15085-2, koji nam omogućavaju izvođenje zahtjevnih zavarenih aluminijskih konstrukcija. Svoje proizvode s površinskom zaštitom, proizvodimo sukladno certifikatima Qualicoat, Qualanod i Qualideco. Vršimo ispitivanje kvalitete FEAL-ovih sustava u ovlaštenim laboratorijima: IGH-Zagreb, IFT-Rosenheim i GBD Bregenz.

Osnovni slogan pod kojim poslujemo je:  
**SAVRŠENSTVO U ALUMINIJU**

Vaš Feal.

*Company FEAL d.o.o. Široki Brijeg is in the market more than 40 years and has a long tradition in the processing of aluminium.*

WE ARE SPECIALIZED in designing aluminium systems and the further processing of aluminium. Bearing in mind the dynamic and demanding market that is constantly changing, we answered with the modern equipment of the plant for aluminum extrusion, electrostatic powder coating and anodizing, as well as machinery for the processing of aluminium profiles. The products that we market are various types of aluminium structures used in construction and industry.

OUR DEVELOPMENT is based solely on creating our own team of experts that monitors global trends in design and offer a complete solutions for the production of aluminium. Alloy systems with its design can be adapted to the specific

needs of clients in architecture and industry from concept to finalized product. In the whole production chain, we are using modern technology and means of protection, and we continued to control the standard requirements of ISO14001:2015, which is the guarantor of our concern for the environment.

WE OWN CERTIFICATES ISO 3834 and 15085-2, which allows us to perform demanding welded aluminum structures. Our products with surface-coating, are manufactured under the certificate Qualicoat, Qualanod and Qualideco. We test the quality of finished Feal systems in accredited laboratories: IGH Zagreb, IFT-Rosenheim and GBD Bregenz.

The main slogan under which we operate is:  
**PERFECTION IN ALUMINIUM**

Your Feal

# SADRŽAJ / CONTENTS

## PROZORI I VRATA BEZ PREKINUTOG TERMIČKOG MOSTA WINDOWS AND DOORS WITHOUT THERMAL BREAK

45 MILL .....	8
Z 50 .....	8
45 DALMO .....	9
AD 60 .....	9

## PROZORI I VRATA S PREKINUTIM TERMIČKIM MOSTOM WINDOWS AND DOORS WITH THERMAL BREAK

TERMO 60 .....	12
TERMO 65 .....	13
TERMO 65 plus .....	14
TERMO 85 .....	15
TERMO 85 S plus .....	16
TERMO 85 SK .....	17
TERMO 85 PA .....	18
TERMO 75 DA .....	19

## VRATA S PREKINUTIM TERMIČKIM MOSTOM DOORS WITH THERMAL BREAK

TERMO 65 VS .....	20
TERMO 65 VP .....	21
TERMO 85 VS .....	22
TERMO 85 VP .....	23

## KLIZNI SISTEMI / SLIDING SYSTEMS

HARMO .....	26
FR 18 .....	27
TERMO 80 .....	28
TERMO 120 .....	29
INOWA .....	30
TERMO 150 .....	31
TERMO 200 DA .....	32
TERMO 80 HD .....	33

## FASADNI SISTEMI / FACADE SYSTEMS

60 K .....	36
50 FK .....	37
F 35 .....	37
60 S .....	38
50 FS .....	38
70 E .....	39
ALUMINIJSKA VENTILIRANA FASADA / VENTILATED ALUMINIUM FACADE .....	40
VENT. FASADA S KAMENIM OBLOGAMA / VENT. FACADE WITH STONE CLADDING .....	41
VENT. FASADA S KERAMIČKIM OBLOGAMA / VENT. FACADE WITH CERAMIC CLADDING .....	42
VENT. FASADA S KOMPOZITNIM OBLOGAMA / VENT. FACADE WITH COMPOSITE CLADDING .....	44

## ZIMSKI VRT / WINTER GARDEN

ZIMSKI VRT / WINTER GARDEN .....	45
----------------------------------	----

## SOLARNA ENERGIJA / SOLAR ENERGY

FNE .....	46
-----------	----

## ZAŠTITA OD SUNCA / SUN PROTECTION

GH 40 .....	50
SP SJENILA / ROLLER SHUTTER .....	51
FIKSNE PERGOLE / FIXED PERGOLAS .....	52
Z 40 .....	54
DALMO .....	55
KLIZNE GRILJE / SLIDING LOUVER SHUTTER .....	55
FIKSNI BRISOLEJI I ŽALUZINE / FIXED SUN BREAKERS AND SHUTTERS .....	56
FEAL SUN 55 POKRETNI BRISOLEJI / ADJUSTABLE SUN BREAKERS .....	57

## PREGRADNI SISTEMI I OGRADE PARTITION WALLS AND FENCES

PF 100 S PREGRADE / PARTITION WALLS .....	60
MF 100 MOBILNE STIJENE / MOBILE WALLS .....	61
MF 45 STAKLENE MOBILNE STIJENE / GLASS MOBILE WALLS .....	62
OF 60 OGRADA / FENCE .....	63
OF 80 OGRADA / FENCE .....	64
OF 100 STAKLENA OGRADA / GLASS FENCE .....	65

## OSTALO / MISC.

RAL UGRADNJA / RAL INSTALLATION .....	66
PARAPETNE KLUPICE / WINDOW SILL PROFILES .....	67
PROFILI OPĆE NAMJENE / GENERAL PURPOSE PROFILES .....	68
CERTIFIKATI / CERTIFICATES .....	69
LABORATORIJSKA ISPITIVANJA / LABORATORY TESTING .....	70

A modern building facade with a grid of light-colored panels. On the left, there are two vertical columns of windows. On the right, there are balconies with black railings and large windows. The sky is blue with a few clouds. A red text box is overlaid on the right side of the image.

SISTEMI ZA PROZORE I  
VRATA **BEZ PREKINUTOG**  
**TERMIČKOG MOSTA**

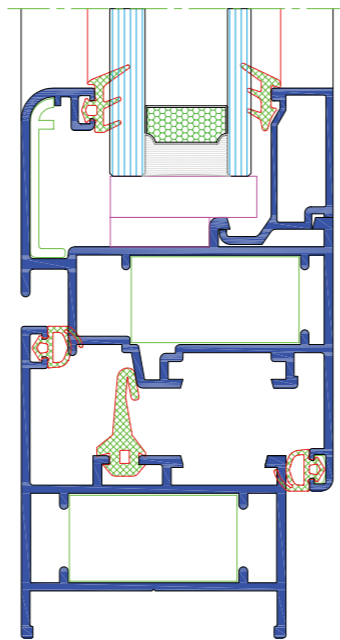
*SYSTEMS FOR WINDOWS  
AND DOORS **WITHOUT**  
**THERMAL BREAK***

## 45 MILL



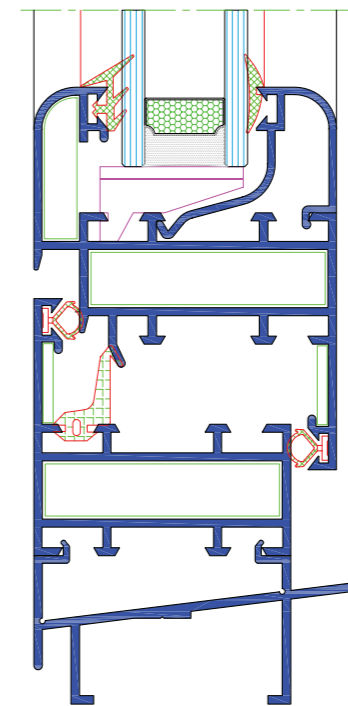
**Tehničke karakteristike:**  
Dubina okvira: 45 mm  
Dubina krila: 53 mm  
Mjera preklopa: 8 mm  
Dubina ispune: 3-33 mm  
Euro utor 15/20

**Technical features:**  
Frame depth: 45 mm  
Sash depth: 53 mm  
Overlap dimension: 8 mm  
Infill depth: 3-33 mm  
Euro groove 15/20

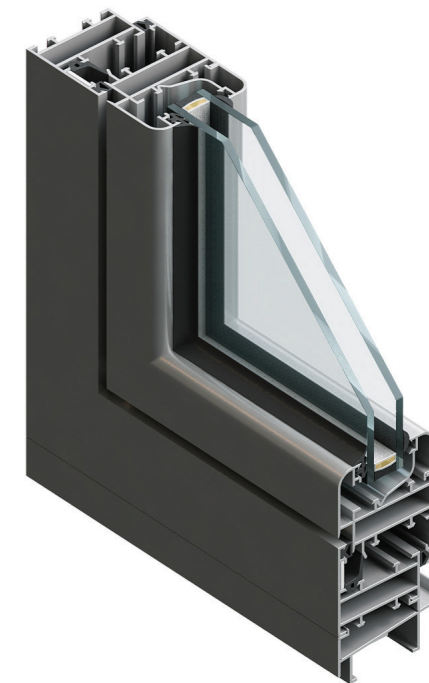


**Tehničke karakteristike:**  
Dubina okvira: 45 mm  
Dubina krila: 53 mm  
Mjera preklopa: 8 mm  
Dubina ispune: 3-31 mm  
Utor 24 mm

**Technical features:**  
Frame depth: 45 mm  
Sash depth: 53 mm  
Overlap dimension: 8 mm  
Infill depth: 3-31 mm  
Groove 24 mm



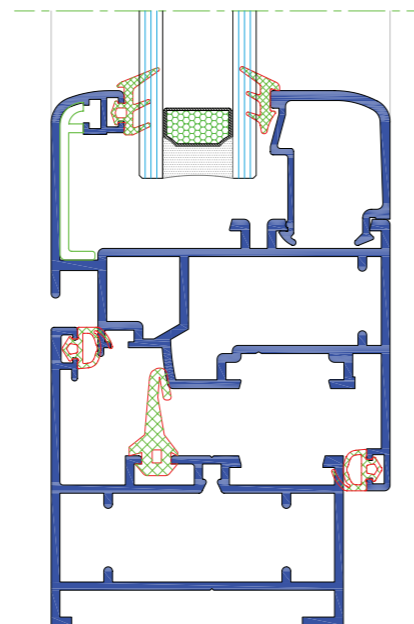
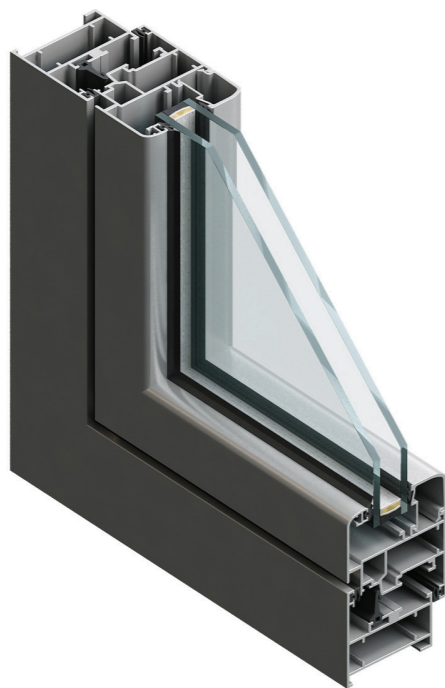
## 45 DALMO



## Z 50

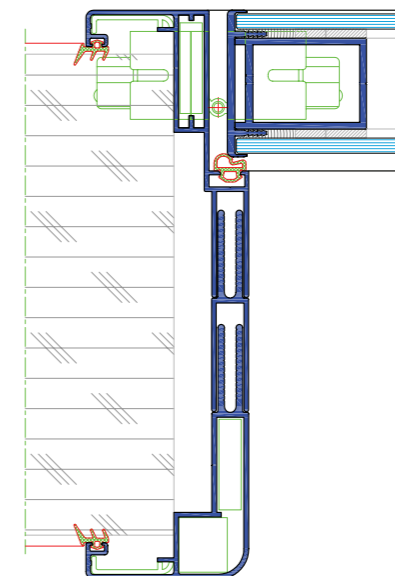
**Tehničke karakteristike:**  
Dubina okvira: 50 mm  
Dubina krila: 58 mm  
Mjera preklopa: 8 mm  
Dubina ispune: 3-38 mm  
Euro utor 15/20

**Technical features:**  
Frame depth: 50 mm  
Sash depth: 58 mm  
Overlap dimension: 8 mm  
Infill depth: 3-38 mm  
Euro groove 15/20

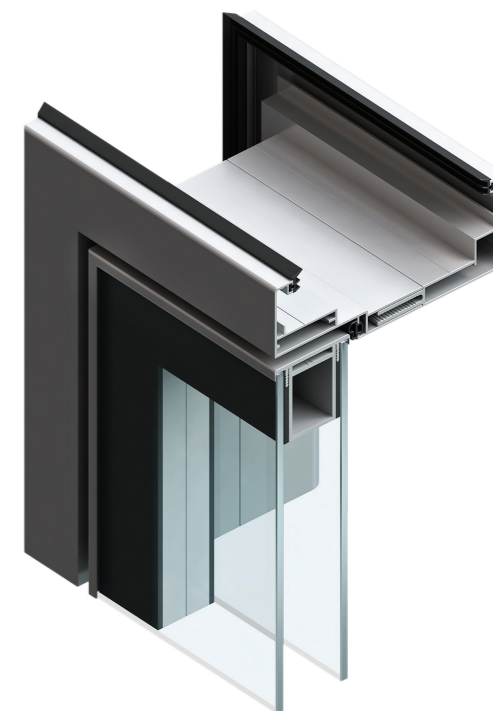


**Tehničke karakteristike:**  
Ugradnja za pregradne zidove debljine od 100-250mm  
Veliki izbor boja i dizajna  
Izbor krila vrata (drvo, aluminij, staklo ili panel)  
Mogućnost primjene za uredske i poslovne prostore, škole, bolnice, itd.  
Stakleno krilo vrata se uklapa u pregradne stijene

**Technical features**  
Wooden and aluminium sash for partition walls in range: 100 to 250 mm.  
Wide range of colors and designs  
Various sashes/wings (wood, aluminium, glass or panel).  
Can be fitted into partition walls.  
Mainly used for offices and meeting rooms, schools, hospitals, etc.



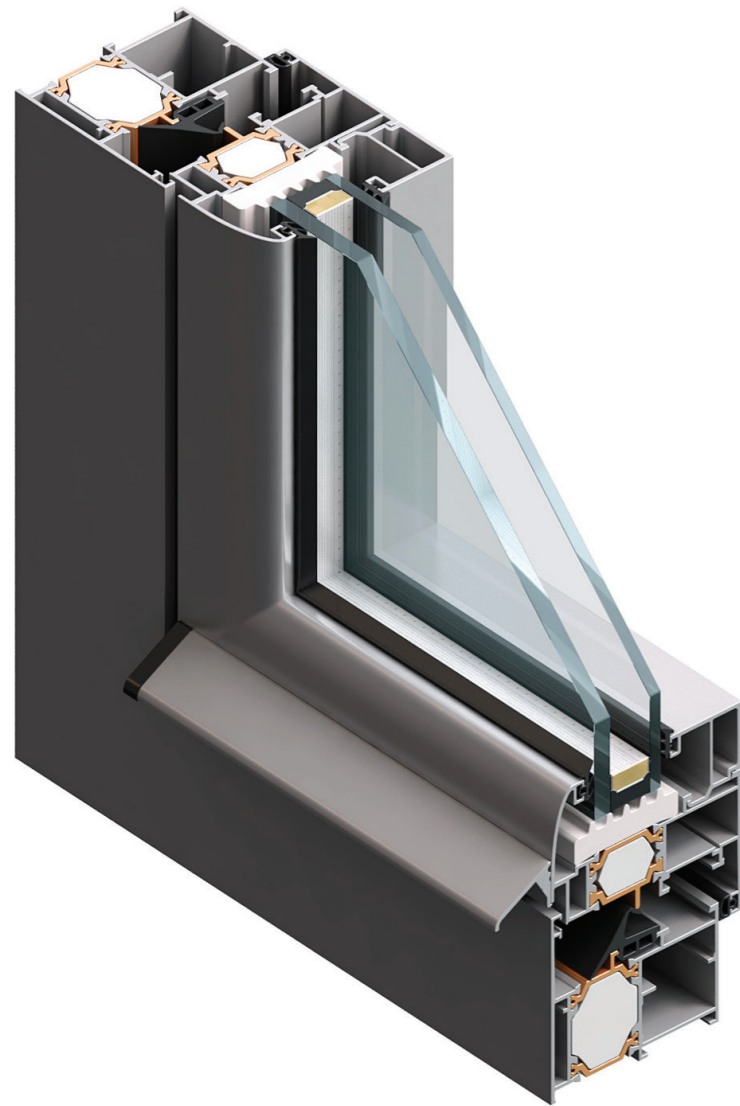
## AD 60





SISTEMI ZA PROZORE I VRATA  
**S PREKINUTIM TERMIČKIM MOSTOM**  
*SYSTEMS FOR WINDOWS AND DOORS  
WITH THERMAL BREAK*

# TERMO 60



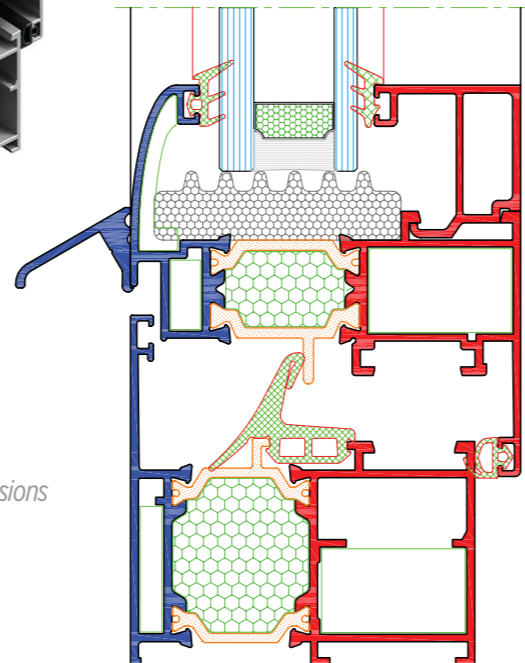
### Tehničke karakteristike:

Dubina okvira: 60 mm  
 Dubina krila: 68 mm  
 Mjera preklopa: 8 mm  
 Dubina ispune: 6-48 mm  
 Euro utor 15/20 i utor za okov 16/9

### Izračun koeficijenta prolaza topline $U_w$ :

Prema prEN 10077-2 dimenzije prozora su 1230x1480 mm ( $U_g=0.6 \text{ W/m}^2\text{K}$ )

$U_w=1.1 \text{ [W/m}^2\text{K]}$



### Technical features:

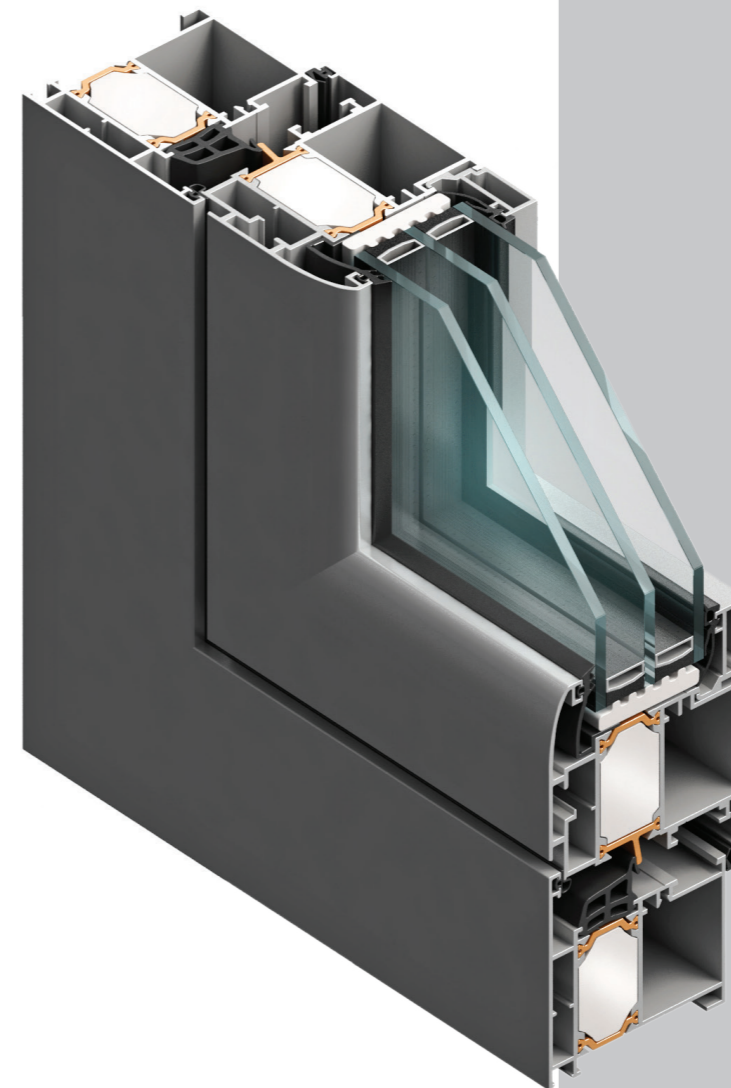
Frame depth: 68 mm  
 Sash/wing depth: 68 mm  
 Overlap dimension: 8 mm  
 Infill: 6-48 mm  
 Euro groove 15/20 and 16/9 groove

### Calculation of thermal transmittance $U_w$ :

According to prEN 10077-2 dimensions of windows are 1230x1480 mm ( $U_g=0.6 \text{ W/m}^2\text{K}$ )

$U_w=1.1 \text{ [W/m}^2\text{K]}$

# TERMO 65



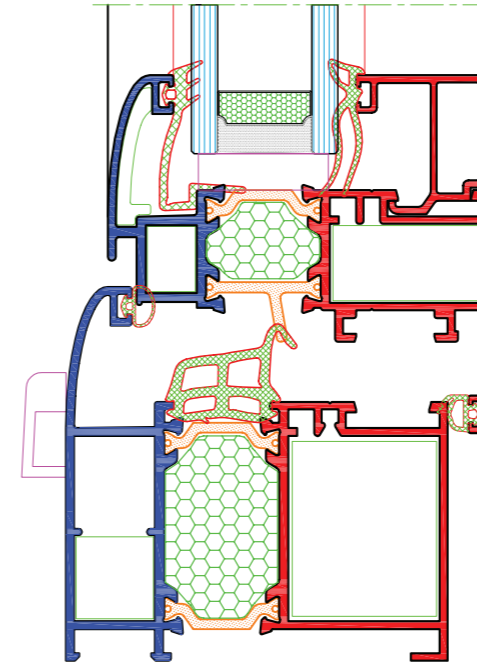
### Tehničke karakteristike:

Dubina okvira: 65 mm  
 Dubina krila: 73 mm  
 Mjera preklopa: 8 mm  
 Dubina ispune: 21-50 mm  
 Poliamidne trake: 22 mm  
 Euro utor 15/20 i utor za okov 16/13

### Izračun koeficijenta prolaza topline $U_w$ :

Prema prEN 10077-2 dimenzije prozora su 1230x1480 mm ( $U_g=0.6 \text{ W/m}^2\text{K}$ )

$U_w=1.3 \text{ [W/m}^2\text{K]}$



### Technical features

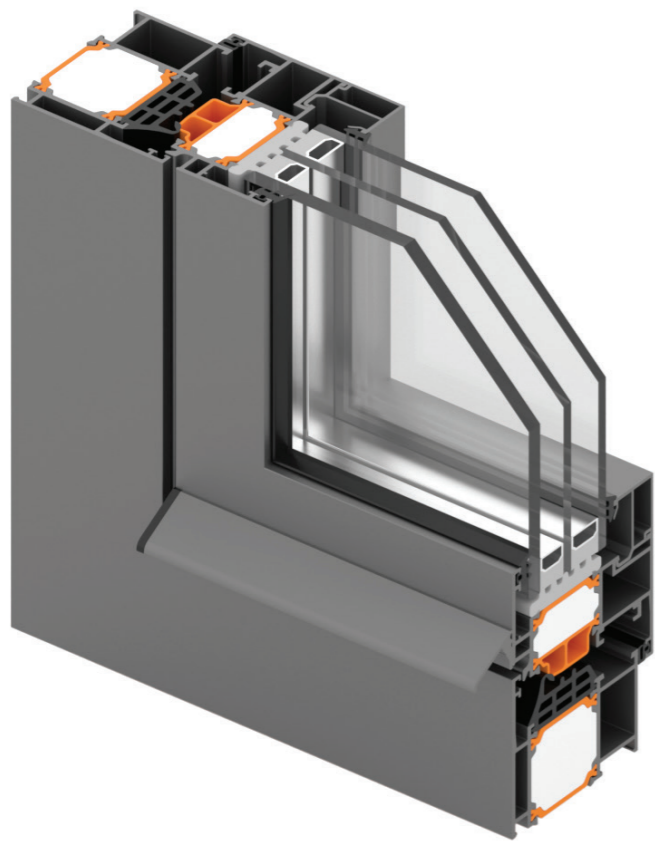
Frame depth: 65 mm  
 Sash/wing depth: 73 mm  
 Overlap dimension: 8 mm  
 Infill depth: 21-50 mm  
 Polyamide sticks: 22 mm  
 Euro groove 15/20 and 16/13 groove

### Calculation of thermal transmittance $U_w$ :

According to prEN 10077-2 dimensions of windows 1230x1480mm ( $U_g=0.6 \text{ W/m}^2\text{K}$ )

$U_w=1.3 \text{ [W/m}^2\text{K]}$

# TERMO 65 plus



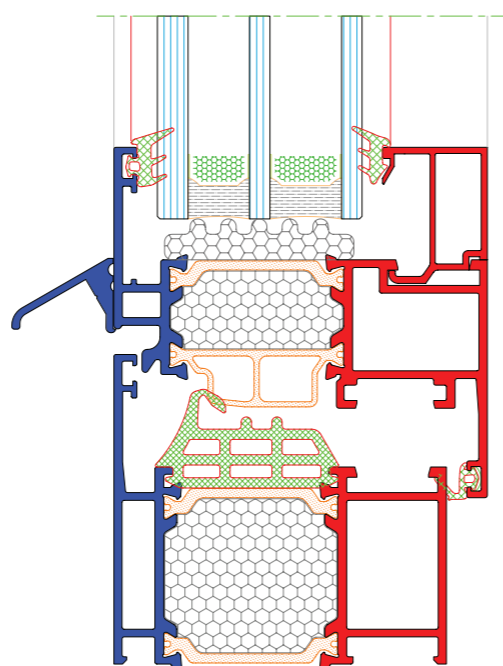
### Tehničke karakteristike:

Dubina okvira: 65 mm  
 Dubina krila: 73 mm  
 Dubina ispune: do 59 mm  
 Poliamidne trake: 34 mm

### Izračun koeficijenta prolaza topline $U_w$ :

Izračun koeficijenta prolaza topline  $U_w$   
 Prema prEN 10077-2 dimenzije  
 prozora su 1230x1480 mm  
 $U_g=0.7 \text{ W/m}^2\text{K}$

$U_w=1.0 \text{ [W/m}^2\text{K]}$



### Technical features:

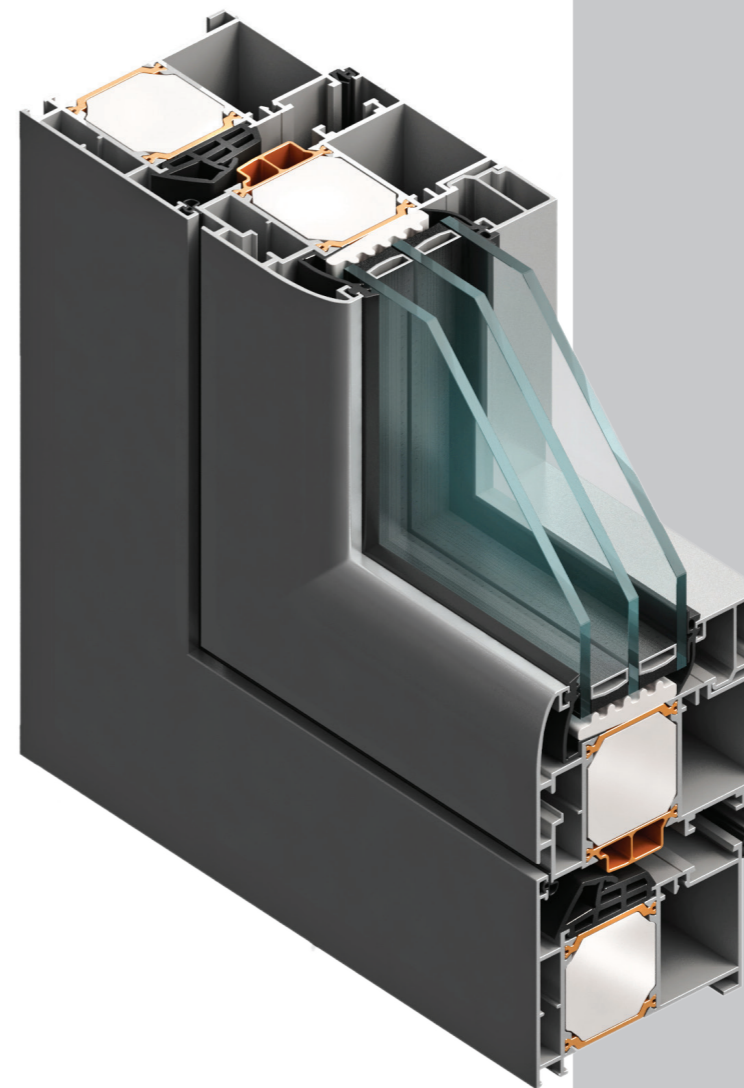
Frame depth: 65 mm  
 Sash/wing depth: 73 mm  
 Infill depth: 59 mm  
 Polyamide sticks: 34 mm

### Calculation of thermal transmittance $U_w$ :

According to prEN 10077-2 dimensions of windows are 1230x1480 mm  
 $U_g = 0.7 \text{ W/m}^2\text{K}$

$U_w = 1.0 \text{ W/m}^2\text{K}$

# TERMO 85



### Tehničke karakteristike:

Dubina okvira: 77 mm  
 Dubina krila: 85 mm  
 Mjera preklopa: 8 mm  
 Dubina ispune: 30-64 mm  
 Poliamidne trake: 34 mm  
 Euro utor 15/20 i utor za okov 16/13

### Izračun koeficijenta prolaza topline $U_w$

Prema prEN 10077-2 dimenzije  
 prozora su 1230x1480 mm  
 $U_g=0.6 \text{ W/m}^2\text{K}$

$U_w=1.0 \text{ [W/m}^2\text{K]}$

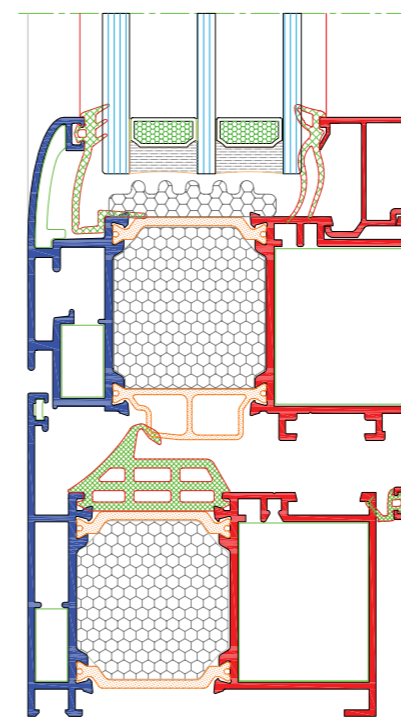
### Technical features

Frame depth: 77 mm  
 Sash/wing depth: 85 mm  
 Overlap dimension: 8 mm  
 Infill depth: 30-64 mm  
 Polyamide sticks: 34 mm  
 Euro groove 15/20 and 16/13 groove

### Calculation of thermal transmittance $U_w$

According to prEN 10077-2 dimensions of windows 1230x1480mm  
 $U_g=0.6 \text{ W/m}^2\text{K}$

$U_w=1.0 \text{ [W/m}^2\text{K]}$



PROZORI I VRATA S PREKINUTIM TERMIČKIM MOSTOM  
 WINDOWS AND DOORS WITH THERMAL BREAK

# TERMO 85 S plus

## Tehničke karakteristike:

Dubina rama: 85 mm  
Dubina krila: 93 mm  
Dubina ispune: do 77 mm  
Termo štapići: 45 mm  
Max. težina krila: 130 kg

## Izračun koeficijenta prolaza topline Uw

Prema prEN 10077-2 dimenzije prozora su 1230x1480 mm  
Ug=0.6 W/m2K

**Uw=0.8 [W/m2K]**

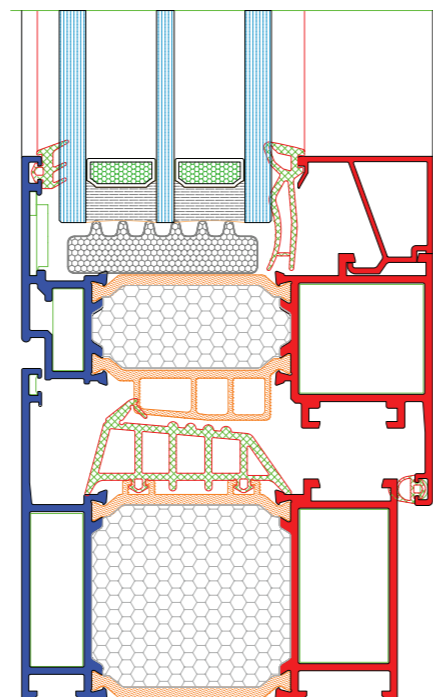
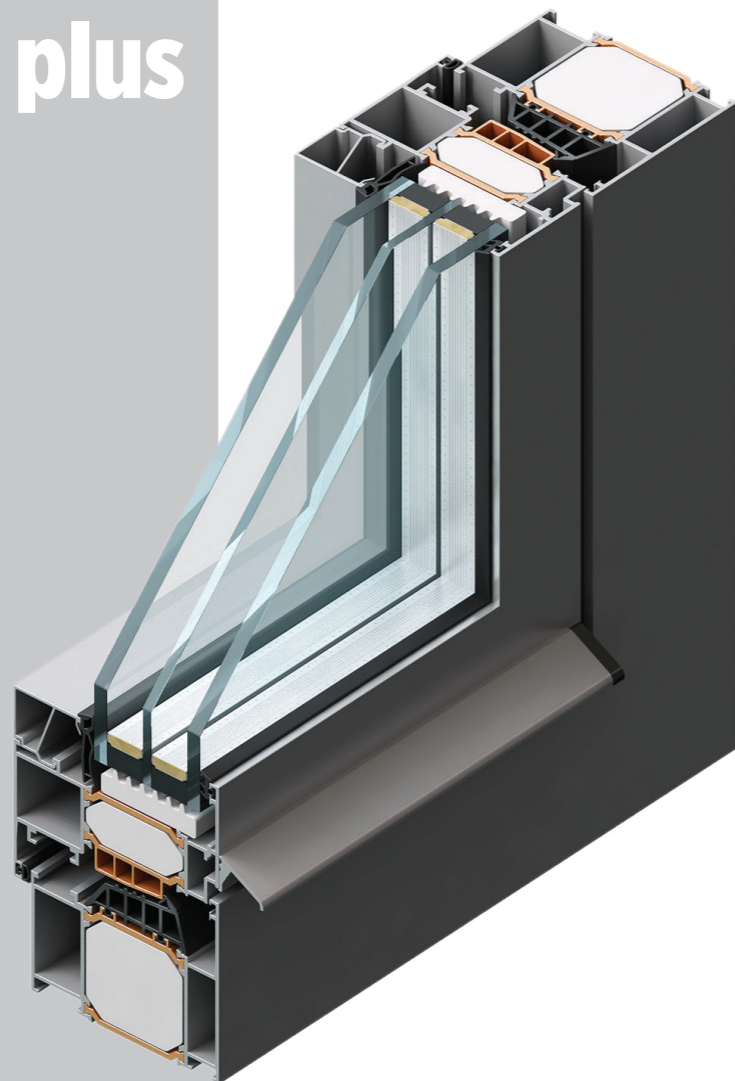
## Technical features

Frame depth: 85 mm  
Sash/wing depth: 93 mm  
Overlap dimension: 8 mm  
Infill max.: 77 mm

## Calculation of thermal transmittance Uw

According to prEN 10077-2 dimensions of windows are 1230x1480mm  
Ug=0.6 W/m2K

**Uw=0.8 [W/m2K]**



# TERMO 85 SK

## Tehničke karakteristike:

Dubina okvira: 82,5 mm  
Dubina krila: 91 mm  
Mjera preklopa: 8 mm  
Max ispuna: 44 mm  
Euro utor 15/20

## Izračun koeficijenta prolaza topline Uw

Prema prEN 10077-2 dimenzije prozora su 1230x1480 mm  
Ug=0.6 W/m2K

**Uw=1.0 [W/m2K]**

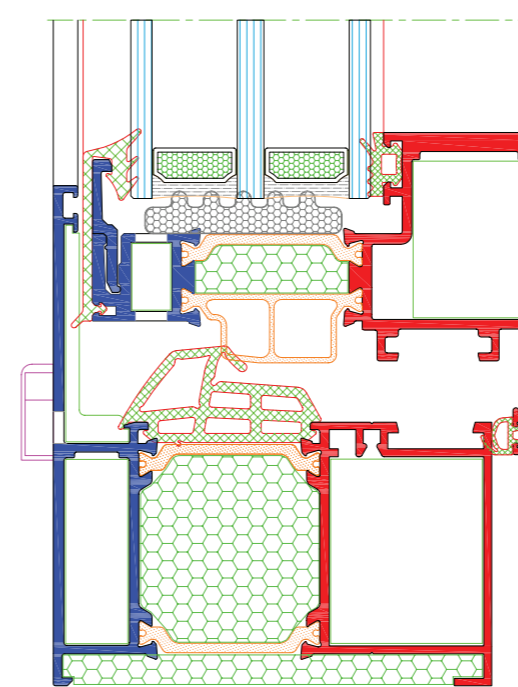
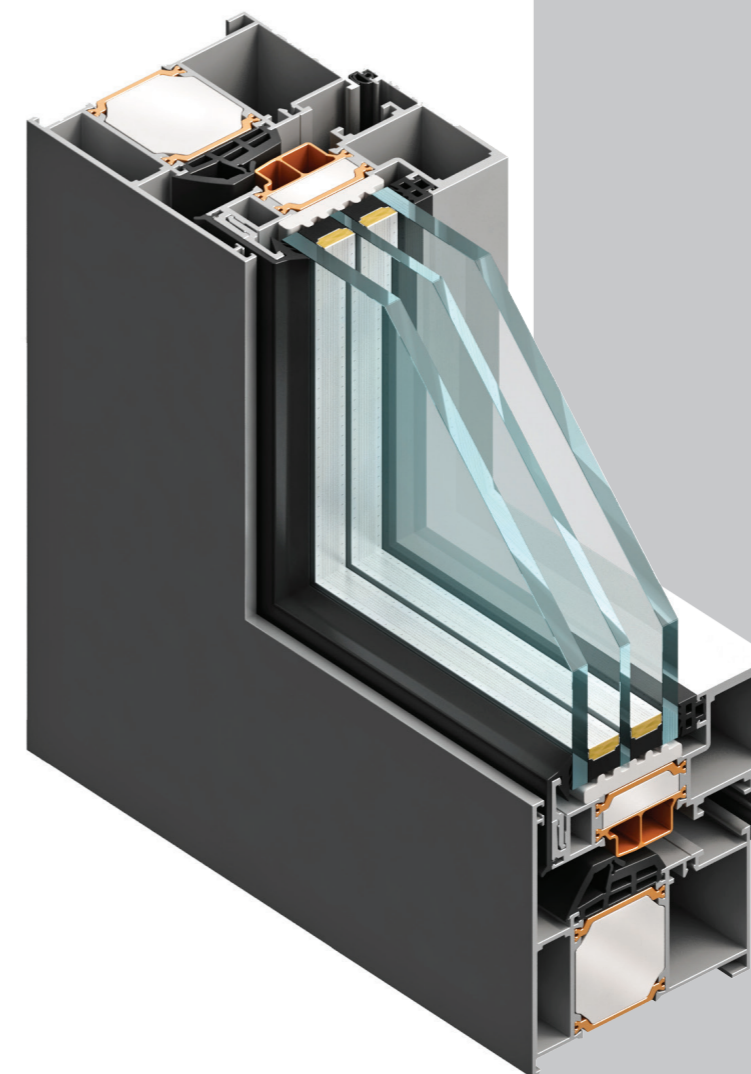
## Technical features

Frame depth: 82,5 mm  
Sash/wing depth: 91 mm  
Overlap dimension: 8 mm  
Infill max: 44 mm  
Euro groove 15/20

## Calculation of thermal transmittance Uw

According to prEN 10077-2 dimensions of windows 1230x1480mm  
Ug=0.6 W/m2K

**Uw=1.0 [W/m2K]**



# TERMO 85 PA



**Tehničke karakteristike:**

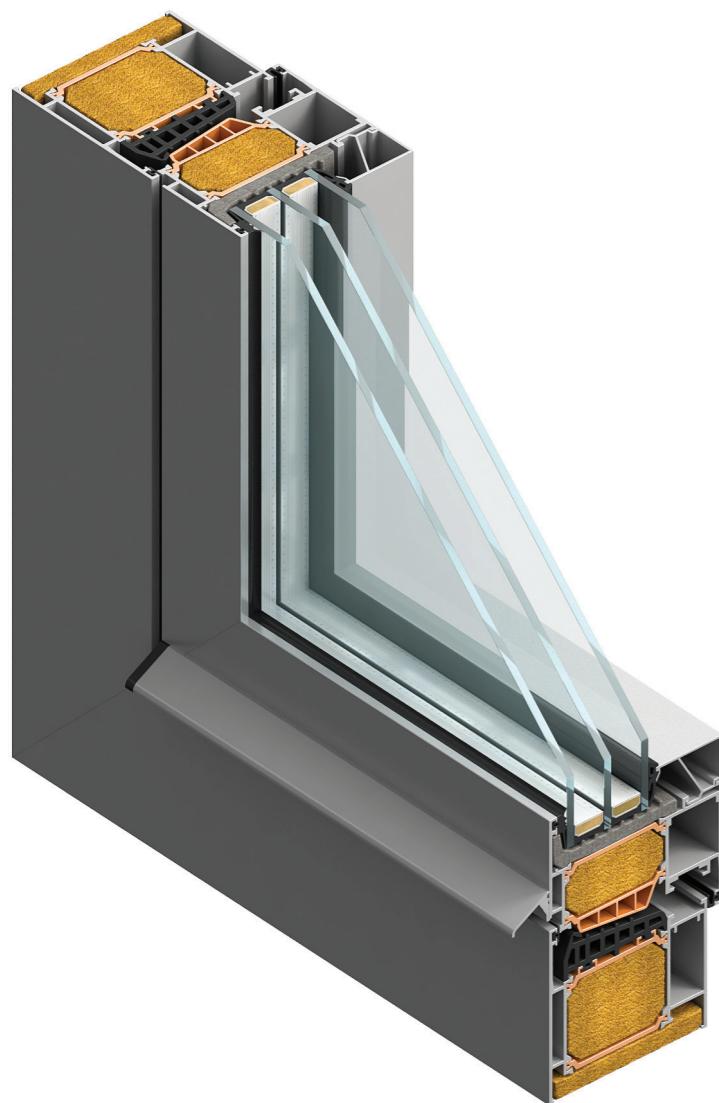
Dubina okvira: 85 mm  
 Dubina krila: 93 mm  
 Dubina ispune: 46 mm  
 Poliamidne trake: 54 mm  
 Euro utor 15/20

**Izračun koeficijenta prolaza topline Uw:**

Prema prEN 10077-2 dimenzije prozora su 1230x1480 mm

$U_g = 0.52 \text{ W/m}^2/\text{K}$   
 $U_f = 0.75 \text{ W/m}^2/\text{K}$

$U_w = 0.67 \text{ W/m}^2/\text{K}$



**Technical features:**

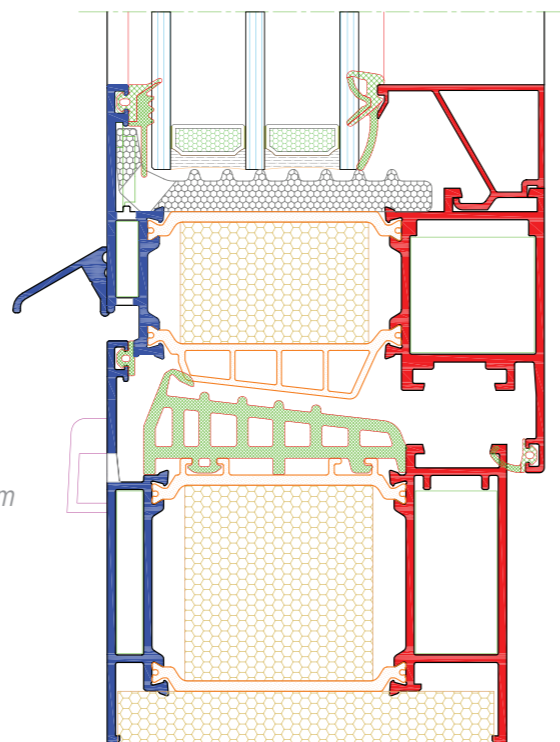
Frame depth: 85 mm  
 Sash/wing depth: 93 mm  
 Infill depth: 46 mm  
 Polyamide sticks: 54 mm  
 Euro groove 15/20

**Calculation of thermal transmittance Uw:**

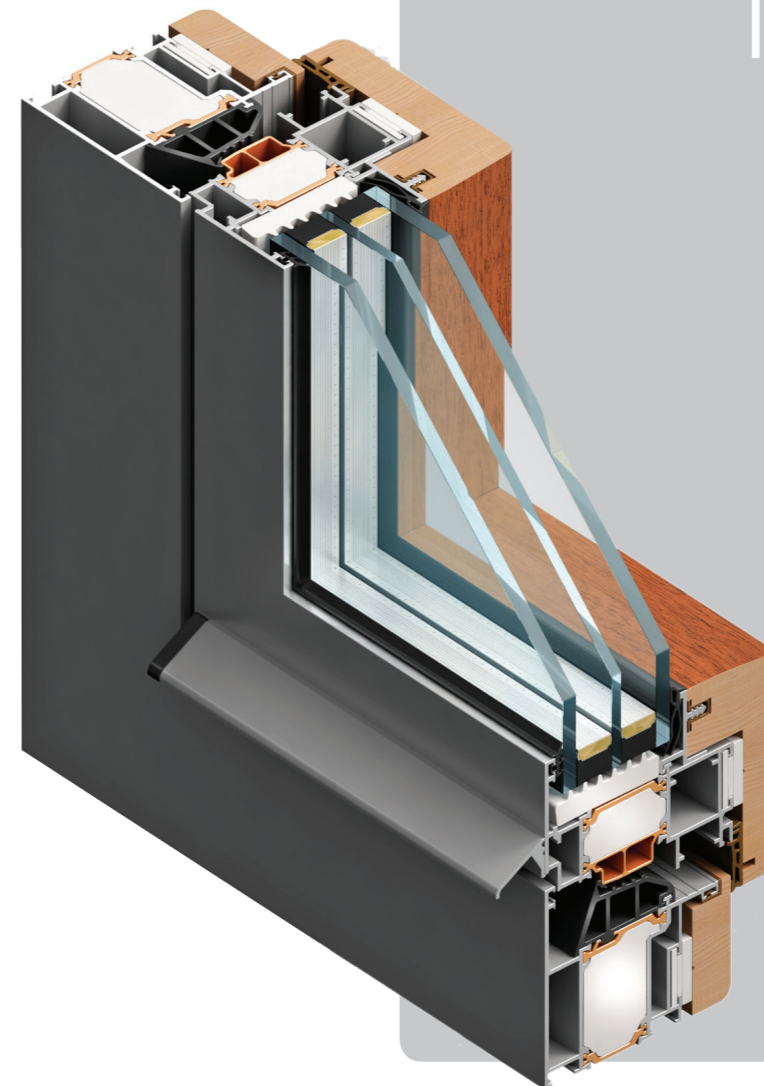
According to prEN 10077-2 dimensions of windows are 1230x1480 mm

$U_g = 0.52 \text{ W/m}^2/\text{K}$   
 $U_f = 0.75 \text{ W/m}^2/\text{K}$

$U_w = 0.67 \text{ W/m}^2/\text{K}$



# TERMO 75 DA



**Tehničke karakteristike:**

Dubina okvira: 76,5 mm  
 Dubina krila : 97,5 mm  
 Ispuna: 44 mm  
 Poliamidne trake: 26 i 34 mm  
 12/18-13

**Izračun koeficijenta prolaza topline Uw**

Prema prEN 10077-2 dimenzije prozora su 1230x1480 mm

$U_g = 0.6 \text{ W/m}^2/\text{K}$

$U_w = 1.0 \text{ [W/m}^2/\text{K]}$

**Technical features**

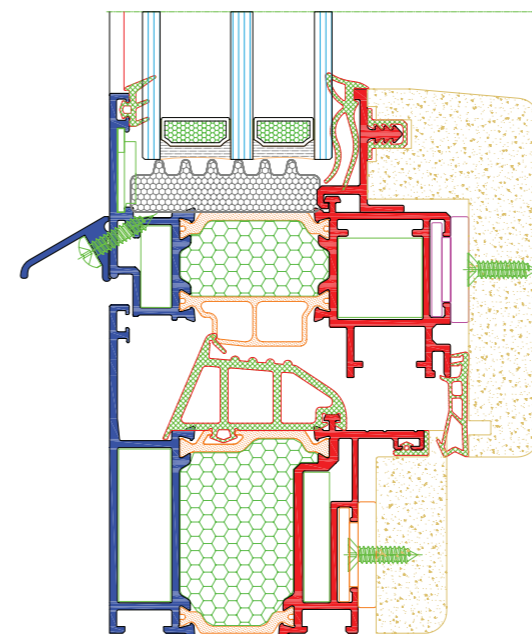
Frame depth: 76,5 mm  
 Sash/wing depth: 97,5 mm  
 Infill: 44 mm  
 Polyamid sticks: 26 and 34 mm  
 12/18-13

**Calculation of thermal transmittance Uw**

According to prEN 10077-2 dimensions of doors are 1230x1480 mm

$U_g = 0.6 \text{ W/m}^2/\text{K}$

$U_w = 1.0 \text{ [W/m}^2/\text{K]}$



PROZORI I VRATA S PREKINUTIM TERMIČKIM MOSTOM  
 WINDOWS AND DOORS WITH THERMAL BREAK

# TERMO 65 VS

VRATA S PREKINUTIM TERMIČKIM MOSTOM  
DOORS WITH THERMAL BREAK

## Tehničke karakteristike:

Dubina okvira: 65 mm  
Dubina krila: 65 mm  
Poliamidne trake: 18 mm  
Max. ispuna: 51.5 mm

## Izračun koeficijenta prolaza topline $U_w$

Prema prEN 10077-2 dimenzije vrata su 1100x2200 mm  
 $U_g=0.6 \text{ W/m}^2\text{K}$

$U_w=1.7 \text{ [W/m}^2\text{K]}$

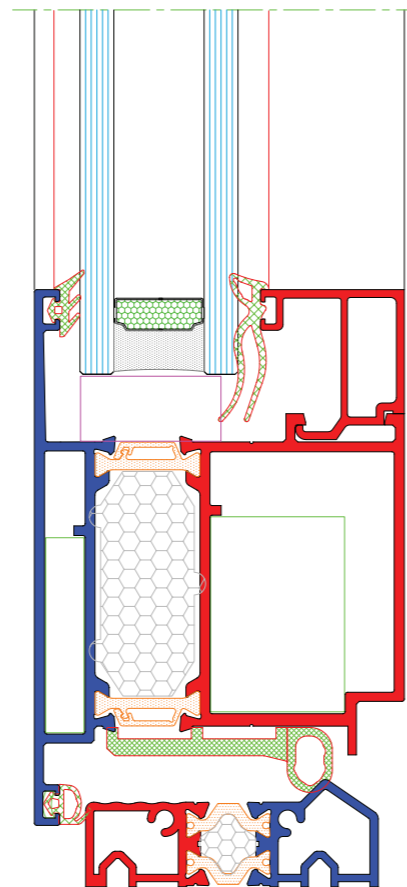
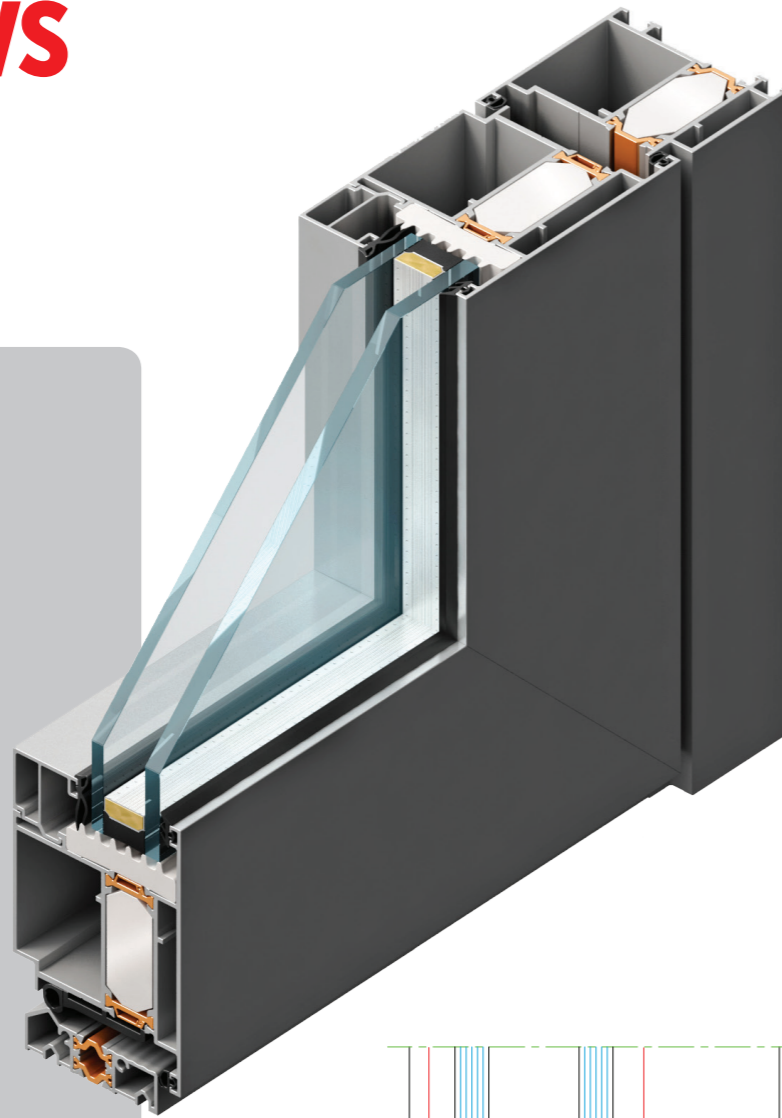
## Technical features

Frame depth: 65 mm  
Sash/wing depth: 65 mm  
Polyamid sticks: 18 mm  
Infill max.: 51.5 mm

## Calculation of thermal transmittance $U_w$

According to prEN 10077-2 dimensions of doors are 1100x2200 mm  
 $U_g=0.6 \text{ W/m}^2\text{K}$

$U_w=1.7 \text{ [W/m}^2\text{K]}$



# TERMO 65 VP

VRATA S PREKINUTIM TERMIČKIM MOSTOM  
DOORS WITH THERMAL BREAK

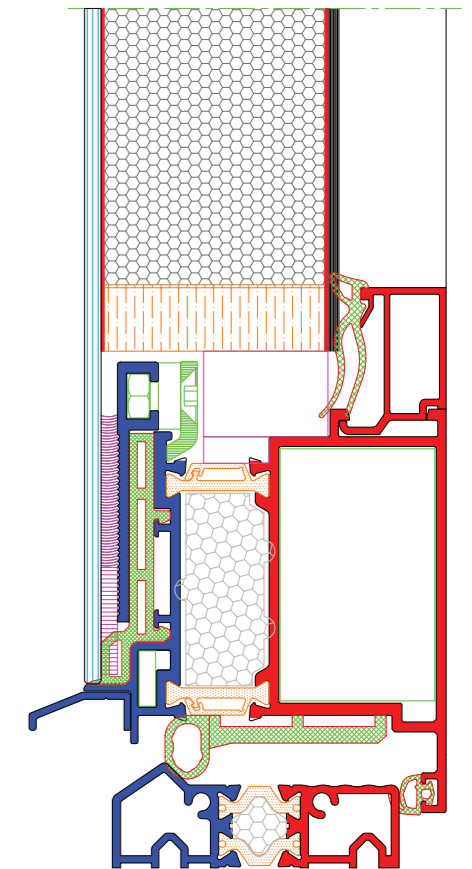
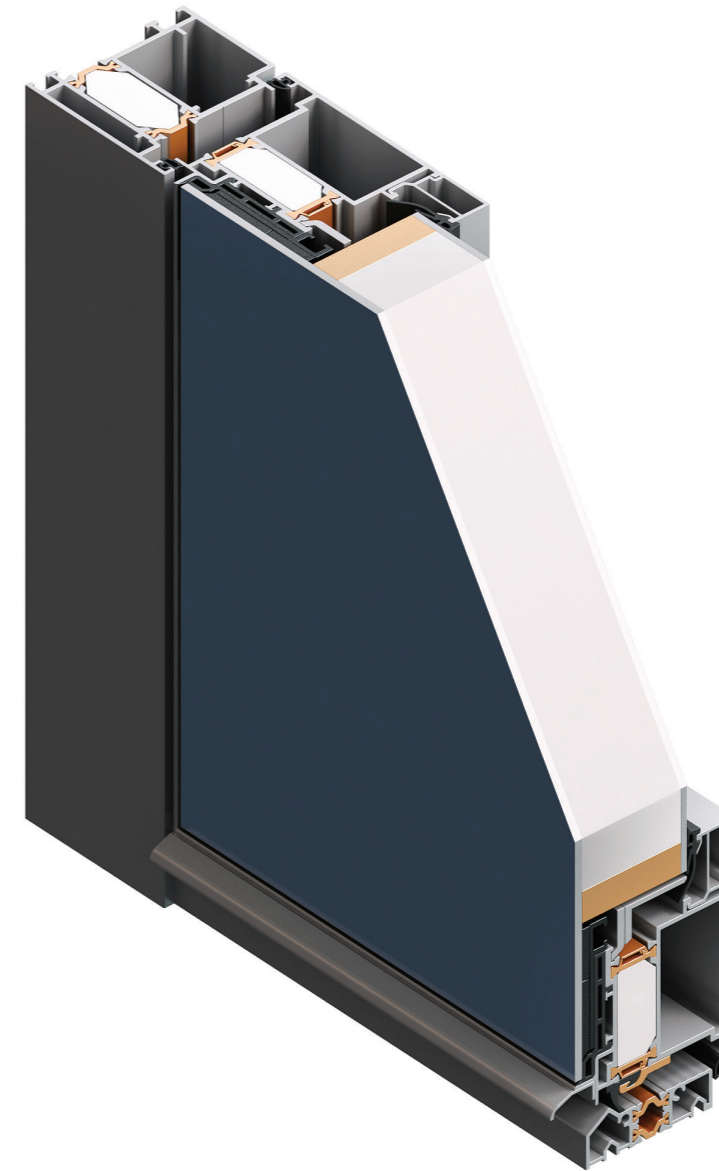
## Tehničke karakteristike:

Dubina okvira: 65 mm  
Dubina krila: 65 mm  
Poliamidne trake: 18 mm  
Max. ispuna: 51.5 mm

## Izračun koeficijenta prolaza topline $U_w$

Prema prEN 10077-2 dimenzije vrata su 1100x2200 mm  
 $U_g=0.6 \text{ W/m}^2\text{K}$

$U_w=1.7 \text{ [W/m}^2\text{K]}$



## Technical features:

Frame depth: 65 mm  
Sash/wing depth: 65 mm  
Polyamid sticks: 18 mm  
Infill max.: 51.5 mm

## Calculation of thermal transmittance $U_w$

According to prEN 10077-2 dimensions of doors are 1100x2200 mm  
 $U_g=0.6 \text{ W/m}^2\text{K}$

$U_w=1.7 \text{ [W/m}^2\text{K]}$

# TERMO 85 VS

VRATA S PREKINUTIM TERMIČKIM MOSTOM  
DOORS WITH THERMAL BREAK

## Tehničke karakteristike:

Dubina okvira: 85 mm  
Dubina krila: 85 mm  
Poliamidne trake: 45, 34 mm  
Max. ispuna: 74 mm

## Izračun koeficijenta prolaza topline $U_w$

Prema prEN 10077-2 dimenzije  
vrata su 1100x2200 mm  
 $U_g=0.60 \text{ W/m}^2\text{K}$

**$U_w=1.1 \text{ [W/m}^2\text{K]}$**

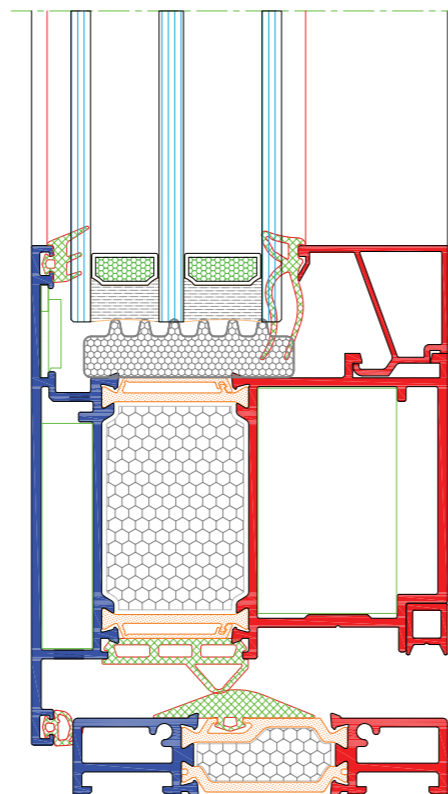
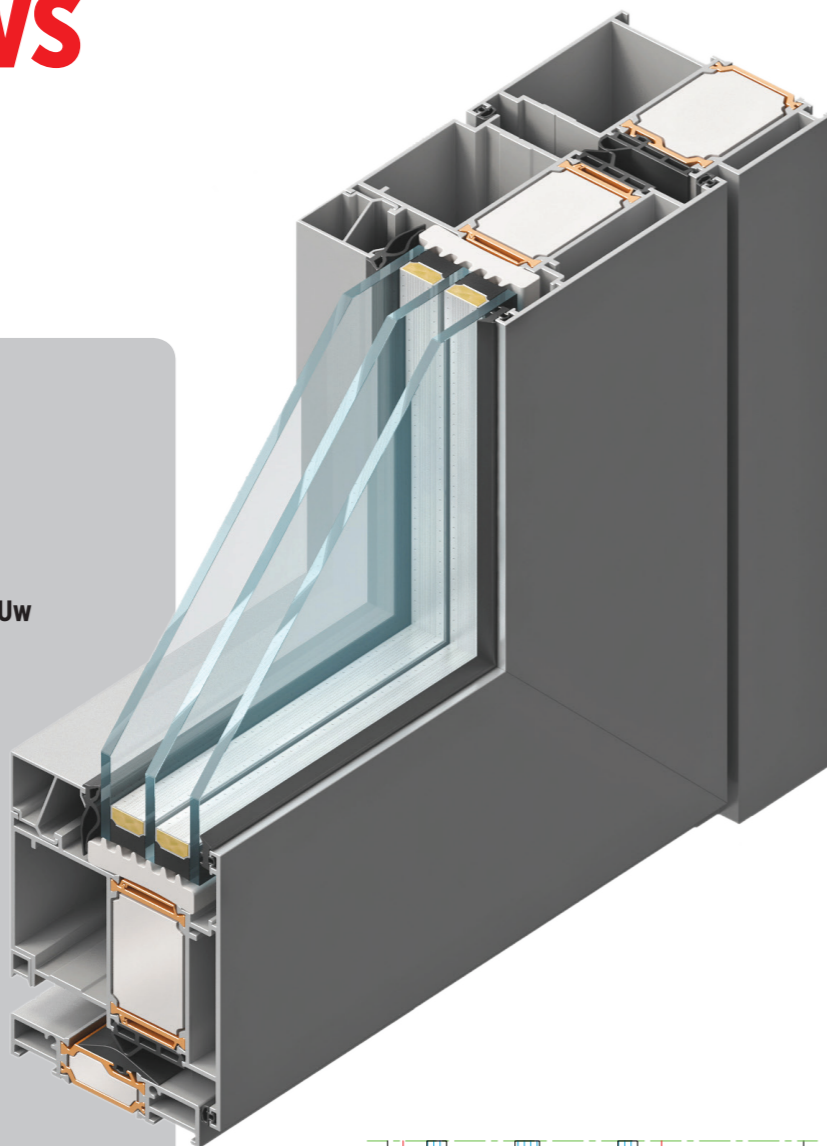
## Technical features

Frame depth: 85 mm  
Sash/wing depth: 85 mm  
Polyamide sticks: 45, 34 mm  
Infill max.: 74 mm

## Calculation of thermal transmittance $U_w$

According to prEN 10077-2 dimensions of  
doors are 1100x2200 mm  
 $U_g=0.60 \text{ W/m}^2\text{K}$

**$U_w=1.1 \text{ [W/m}^2\text{K]}$**



# TERMO 85 VP

VRATA S PREKINUTIM TERMIČKIM MOSTOM  
DOORS WITH THERMAL BREAK

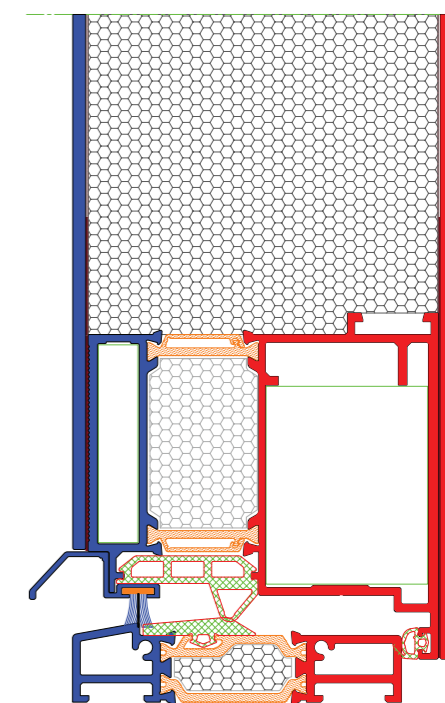
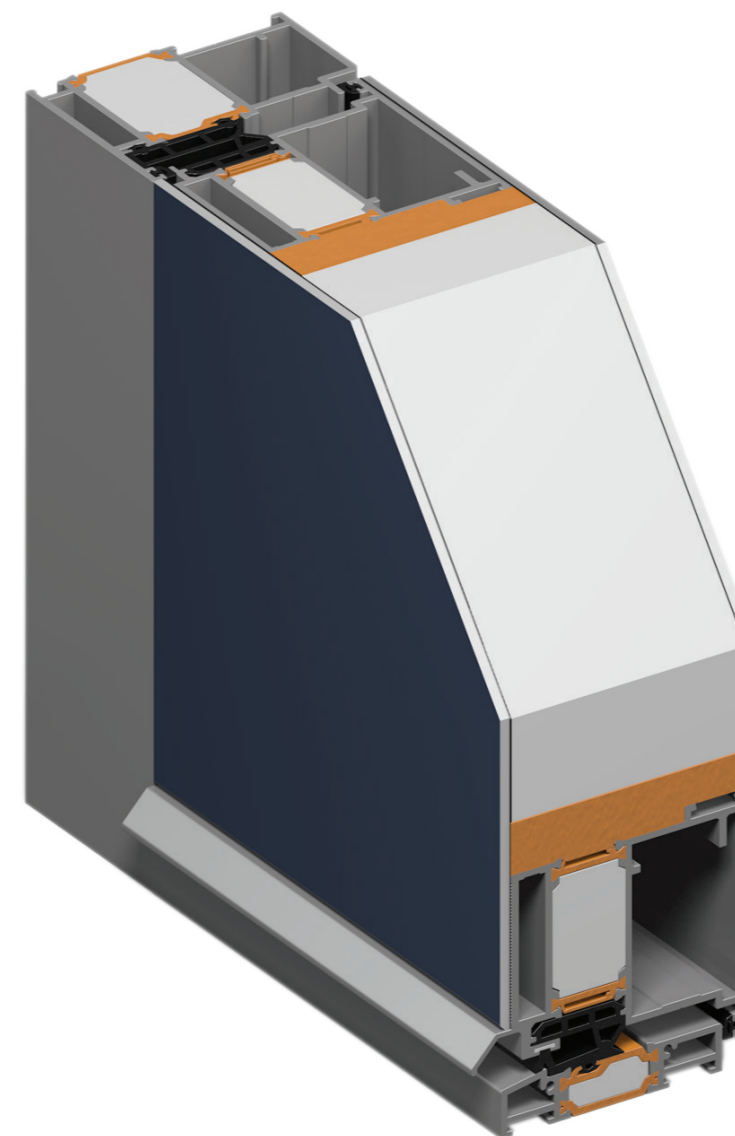
## Tehničke karakteristike:

Dubina okvira: 85 mm  
Dubina krila: 85 mm  
Poliamidne trake: 45, 34 mm  
Max. ispuna: 74 mm

## Izračun koeficijenta prolaza topline $U_w$

Prema prEN 10077-2 dimenzije  
vrata su 1100x2200 mm  
 $U_g=0.65 \text{ W/m}^2\text{K}$

**$U_w=1.2 \text{ [W/m}^2\text{K]}$**



**KLIZNI SISTEMI**  
***SLIDING SYSTEMS***



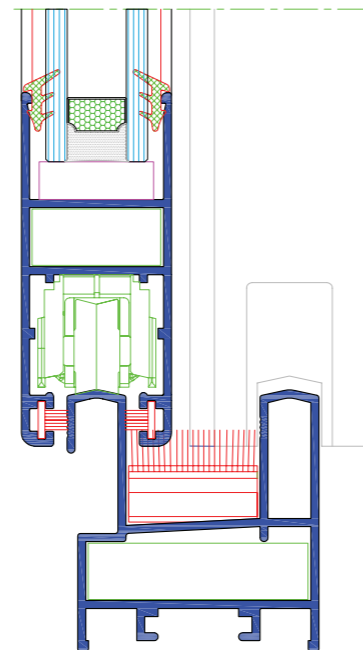
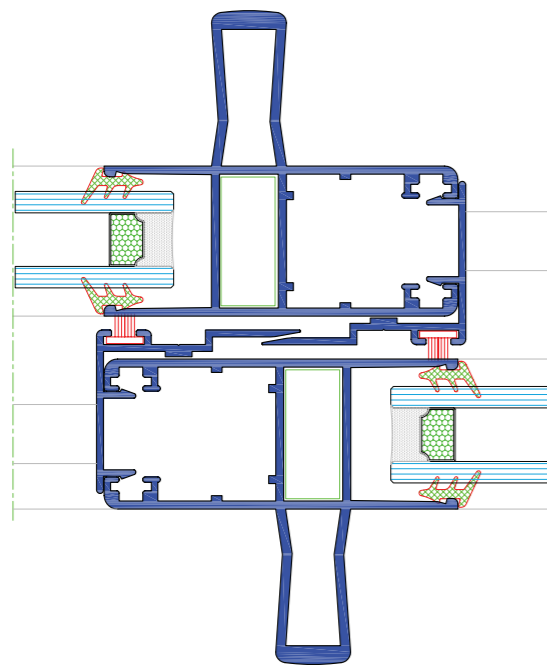
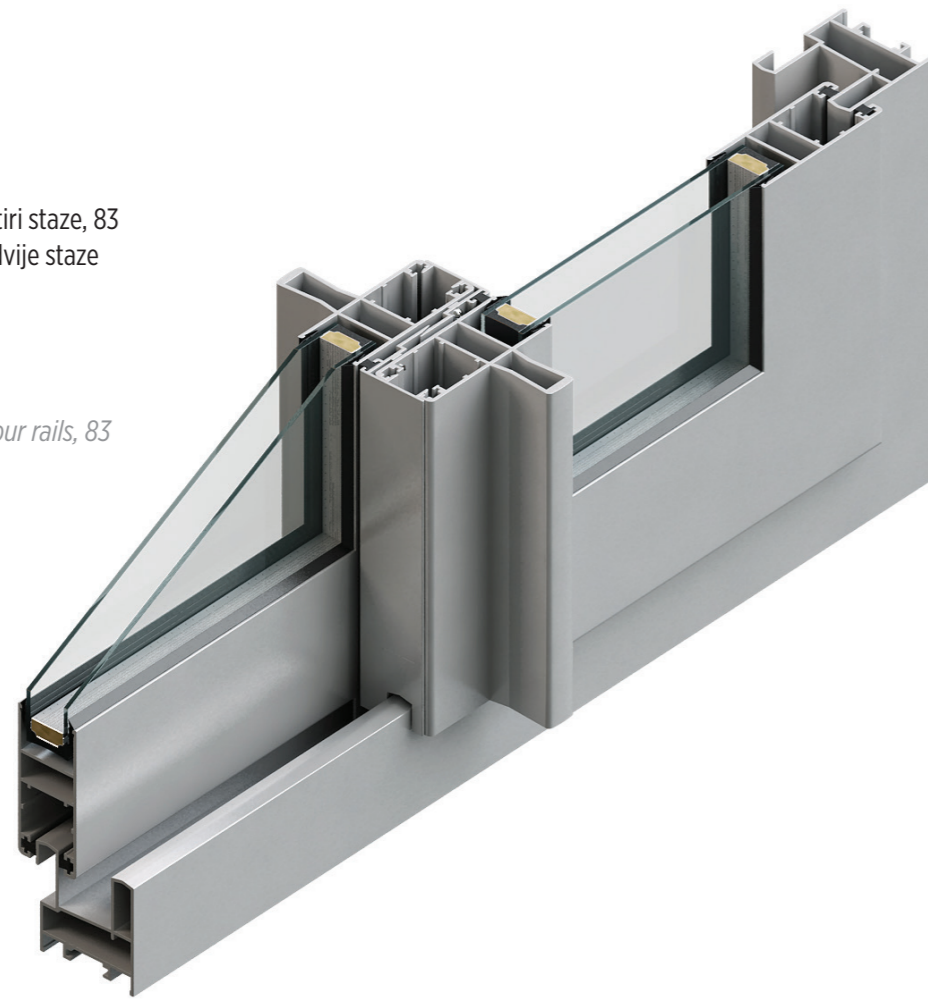
# HARMO

## Tehničke karakteristike:

Dubina okvira: 117 mm za četiri staze, 83 mm za tri staze i 47 mm za dvije staze  
 Dubina krila: 28 mm  
 Dubina ispune: 4-18 mm

## Technical features

Frame depth: 117 mm with four rails, 83 mm with three rails and 47 mm with two rails  
 Sash depth: 28 mm  
 Infill depth: 4 -18 mm



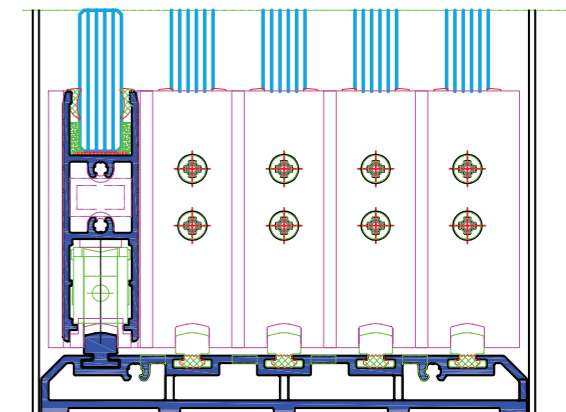
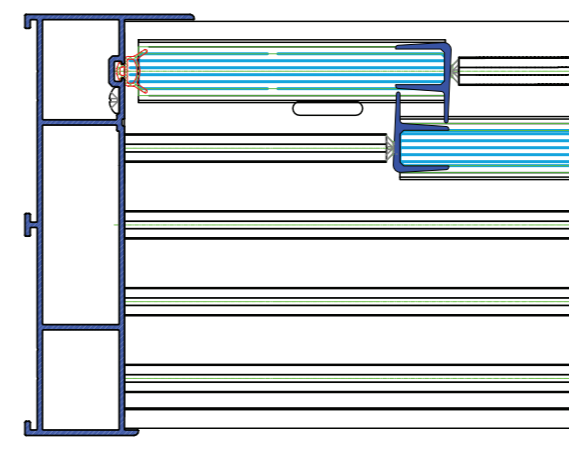
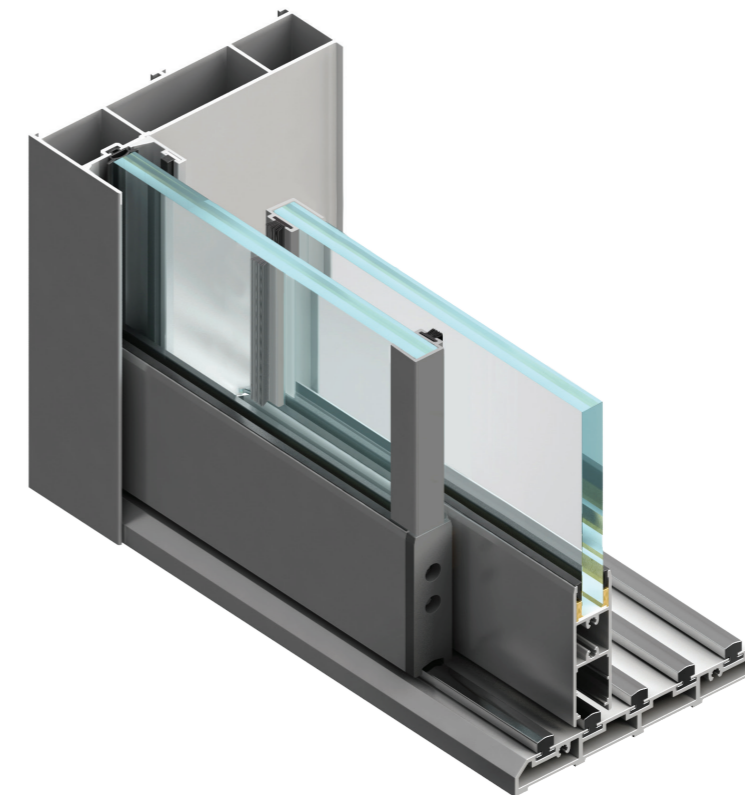
# FR-18

## Tehničke karakteristike:

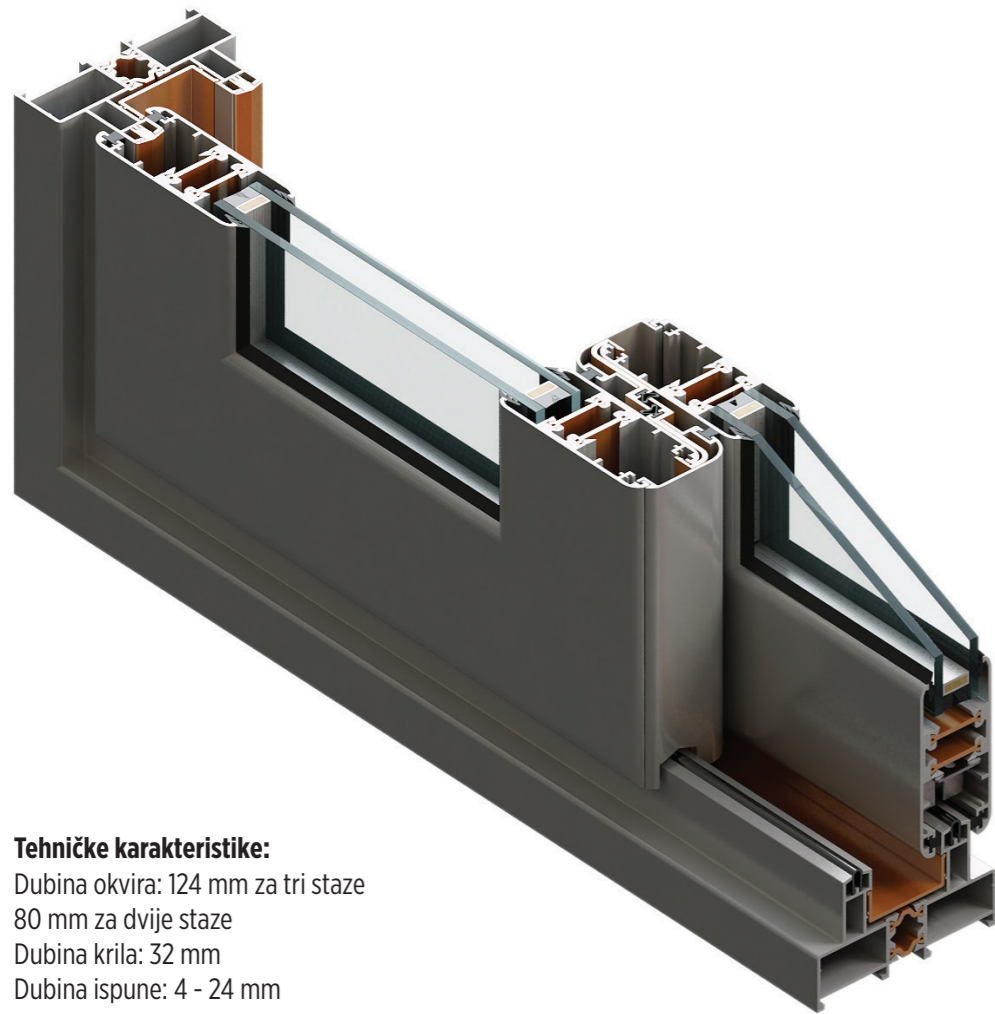
Dubina okvira: 120 mm za pet staza i 76.6 mm za tri staze  
 Dubina krila: 18 mm  
 Dubina ispune: 8 - 10 mm

## Technical features:

Frame depth: 120 mm with five rails and 76.6 mm with three rails  
 Sash/wing depth: 18 mm  
 Infill depth: 8 - 10 mm



# TERMO 80

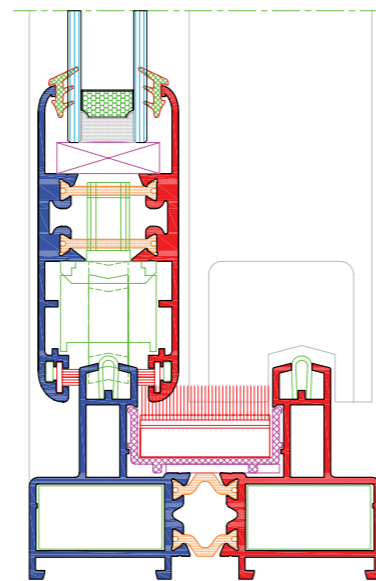
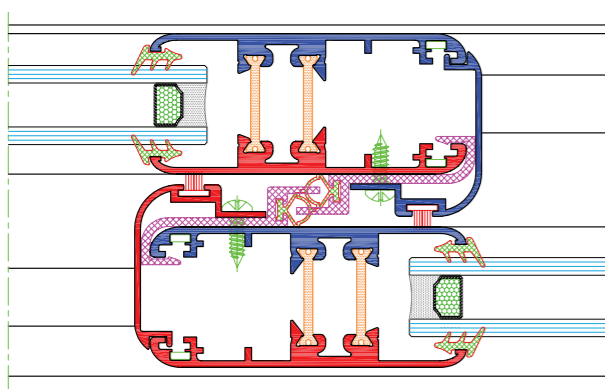


### Tehničke karakteristike:

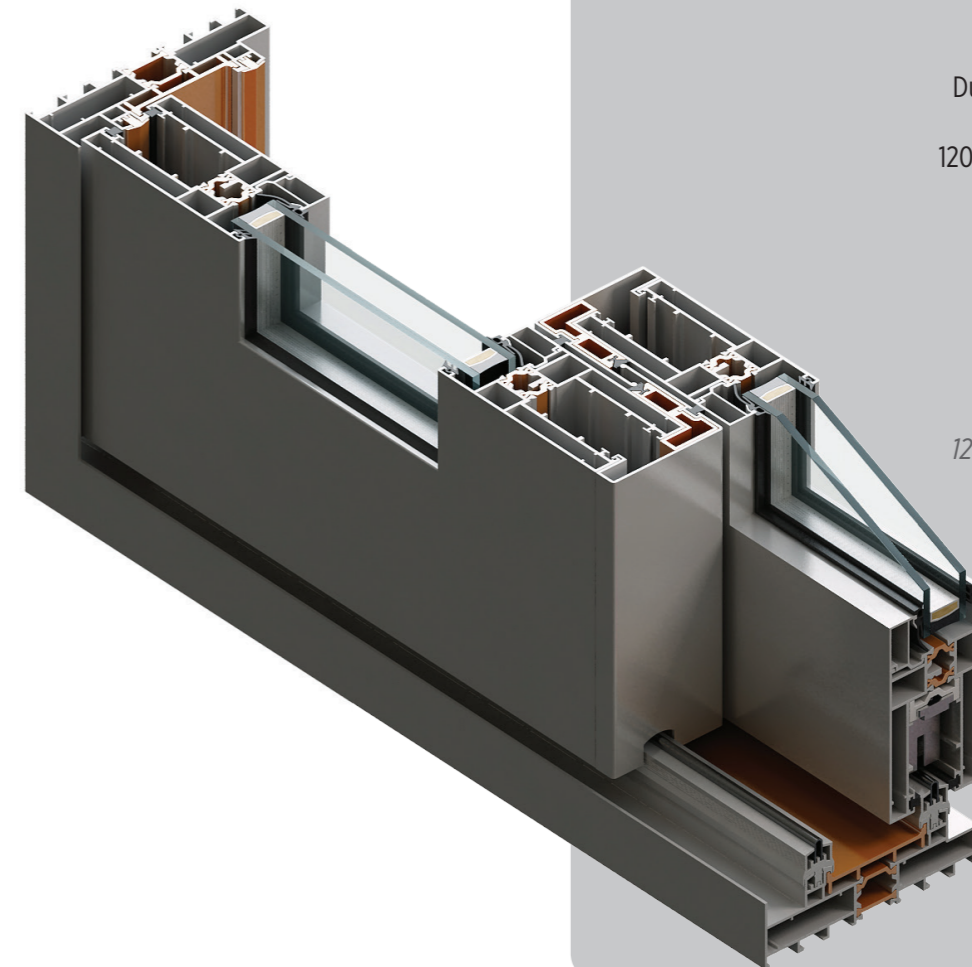
Dubina okvira: 124 mm za tri staze  
80 mm za dvije staze  
Dubina krila: 32 mm  
Dubina ispune: 4 - 24 mm

### Technical features:

Frame depth: 124 mm for three tracks or rails  
80 mm for two tracks or rails  
Sash/wing depth: 32 mm  
Infill depth: 4 - 18 mm



# TERMO 120

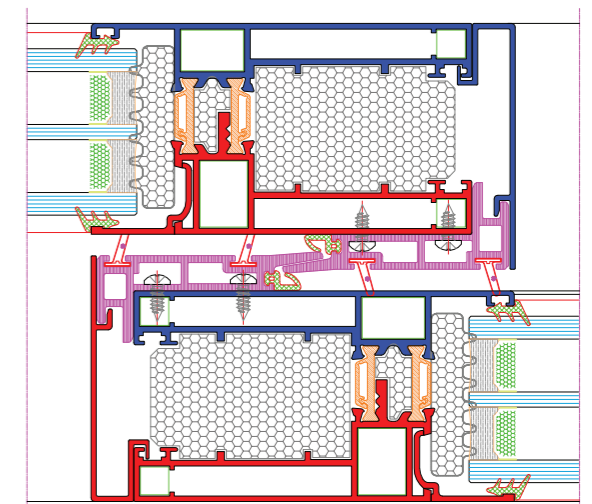
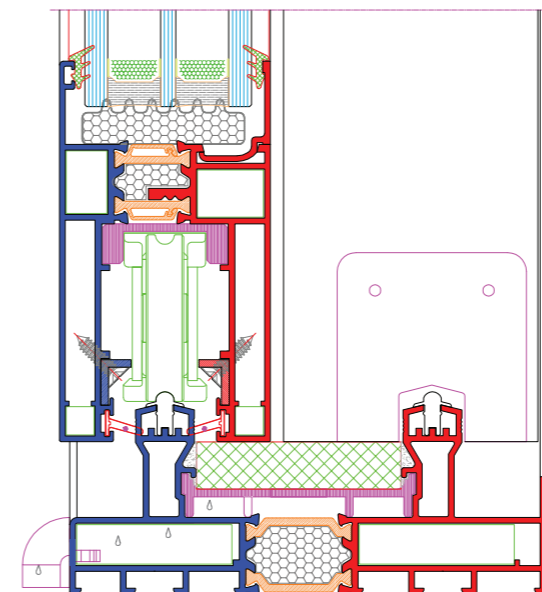


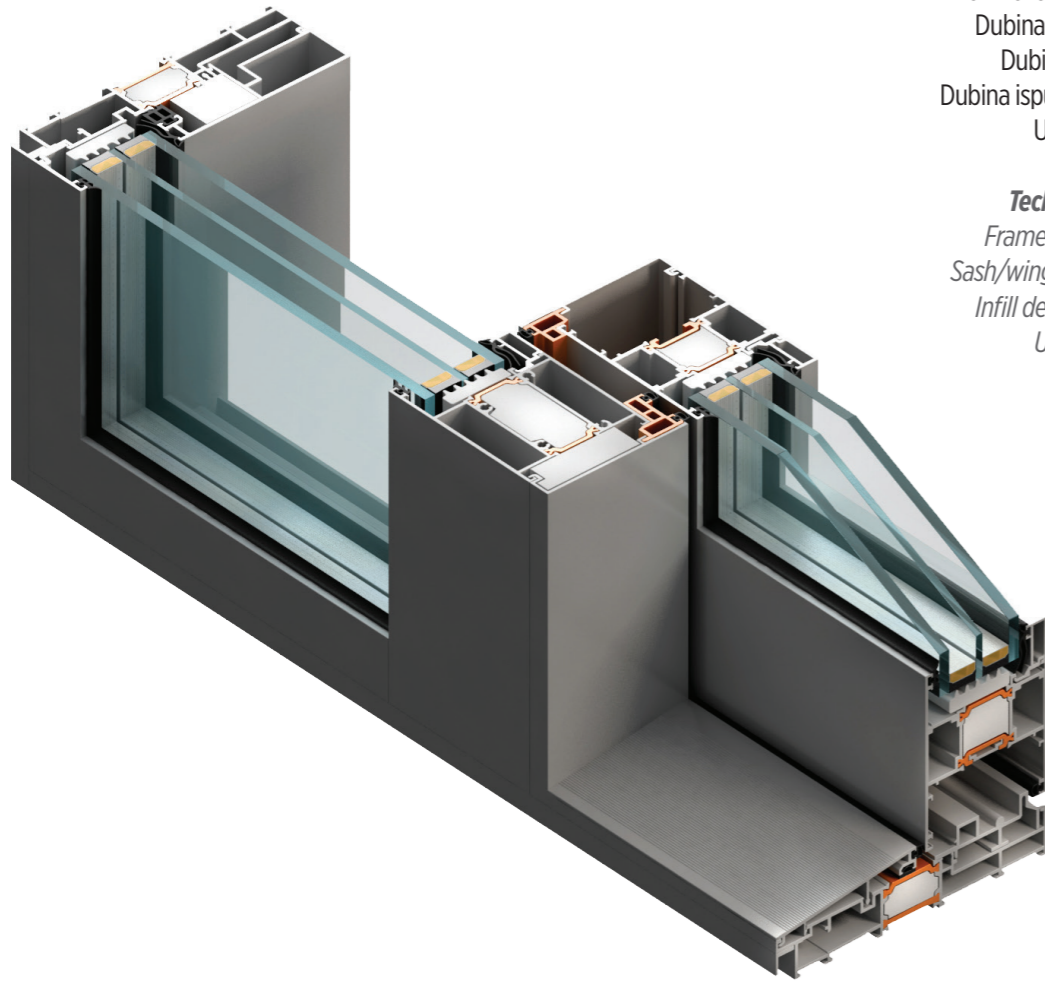
### Tehničke karakteristike:

Dubina okvira: 185 mm za tri  
klizne stijene  
120 mm za dvije klizne stijene  
Dubina krila: 50 mm  
Dubina ispune: 44 mm  
 $U_w \geq 1.5 \text{ W/m}^2\text{K}$

### Technical features:

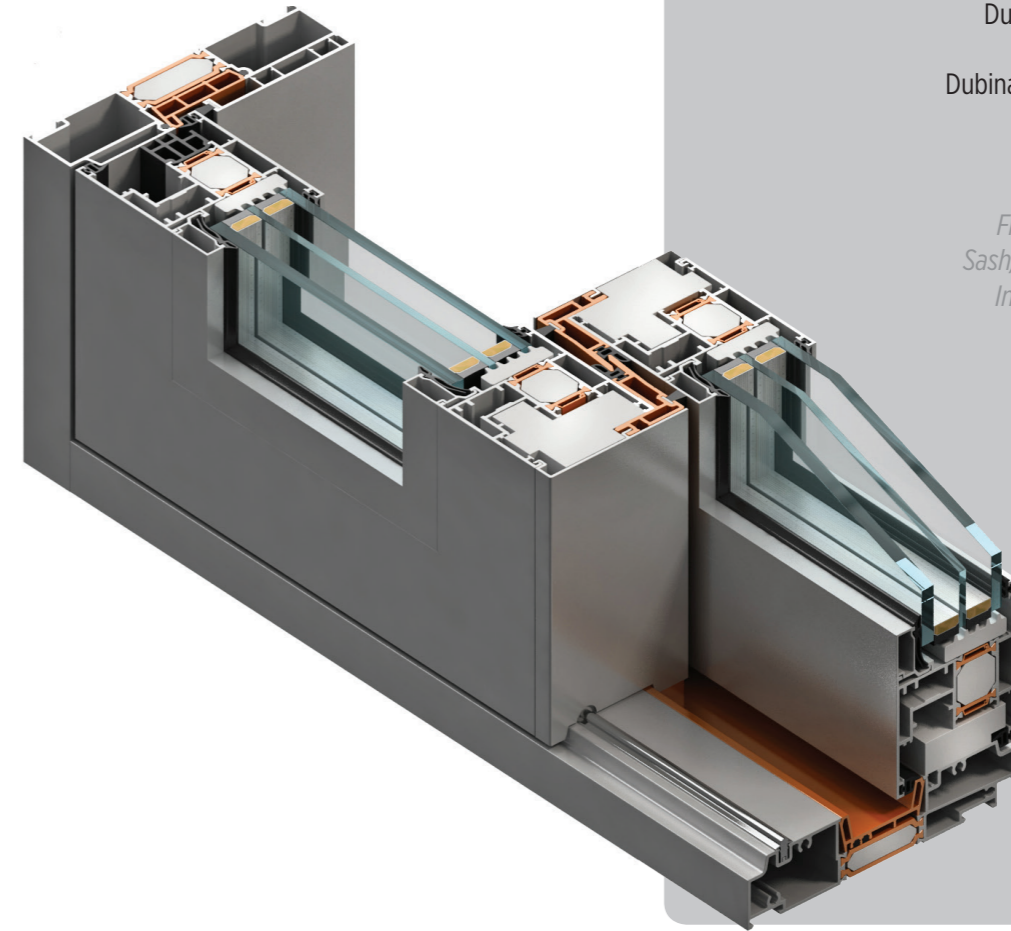
Frame depth: 185 mm for  
three sliding walls  
120 mm for two sliding walls  
Sash/wing depth: 50 mm  
Infill depth: 44 mm  
 $U_w \geq 1.5 \text{ W/m}^2\text{K}$





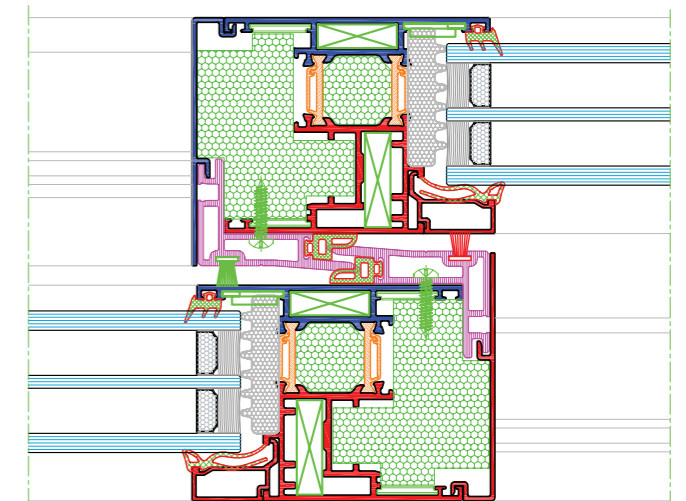
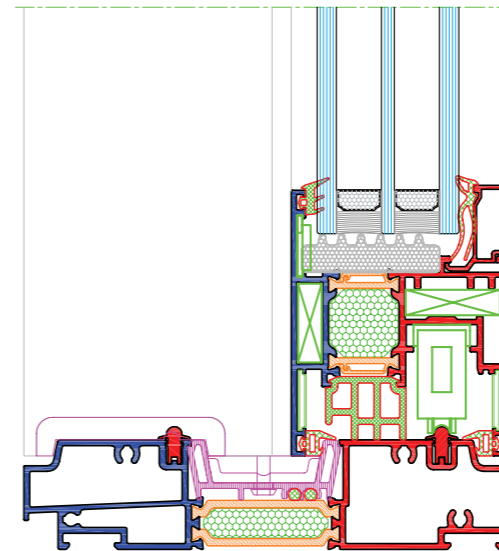
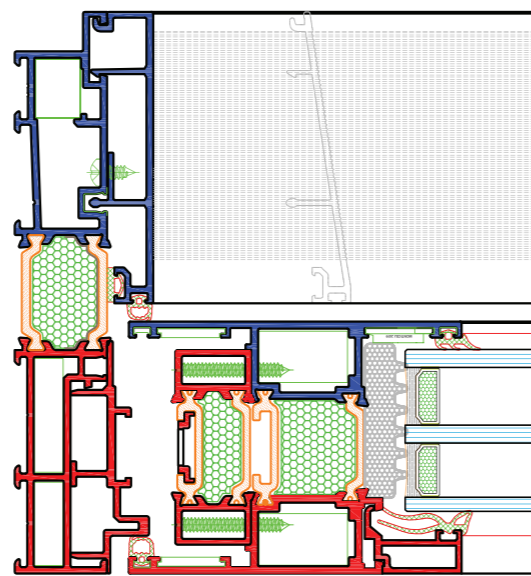
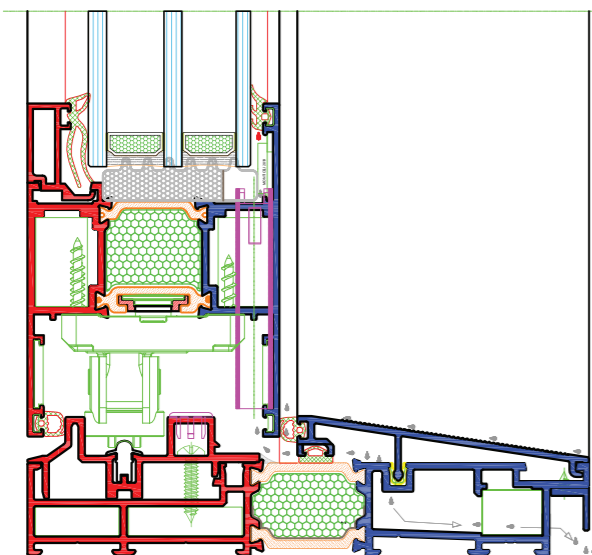
**Tehničke karakteristike:**  
 Dubina okvira: 156 mm  
 Dubina krila: 70 mm  
 Dubina ispune: 18 - 57 mm  
 $U_w \geq 1.2 \text{ W/m}^2\text{K}$

**Technical features:**  
 Frame depth: 156 mm  
 Sash/wing depth: 70 mm  
 Infill depth: 18 - 57 mm  
 $U_w \geq 1.2 \text{ W/m}^2\text{K}$



**Tehničke karakteristike:**  
 Dubina okvira: 150 mm  
 Dubina krila: 67 mm  
 Dubina ispune: 14 - 54 mm  
 $U_w \geq 1.2 \text{ W/m}^2\text{K}$

**Technical features:**  
 Frame depth: 150 mm  
 Sash/wing depth: 67 mm  
 Infill depth: 14-54 mm  
 $U_w \geq 1.2 \text{ W/m}^2\text{K}$



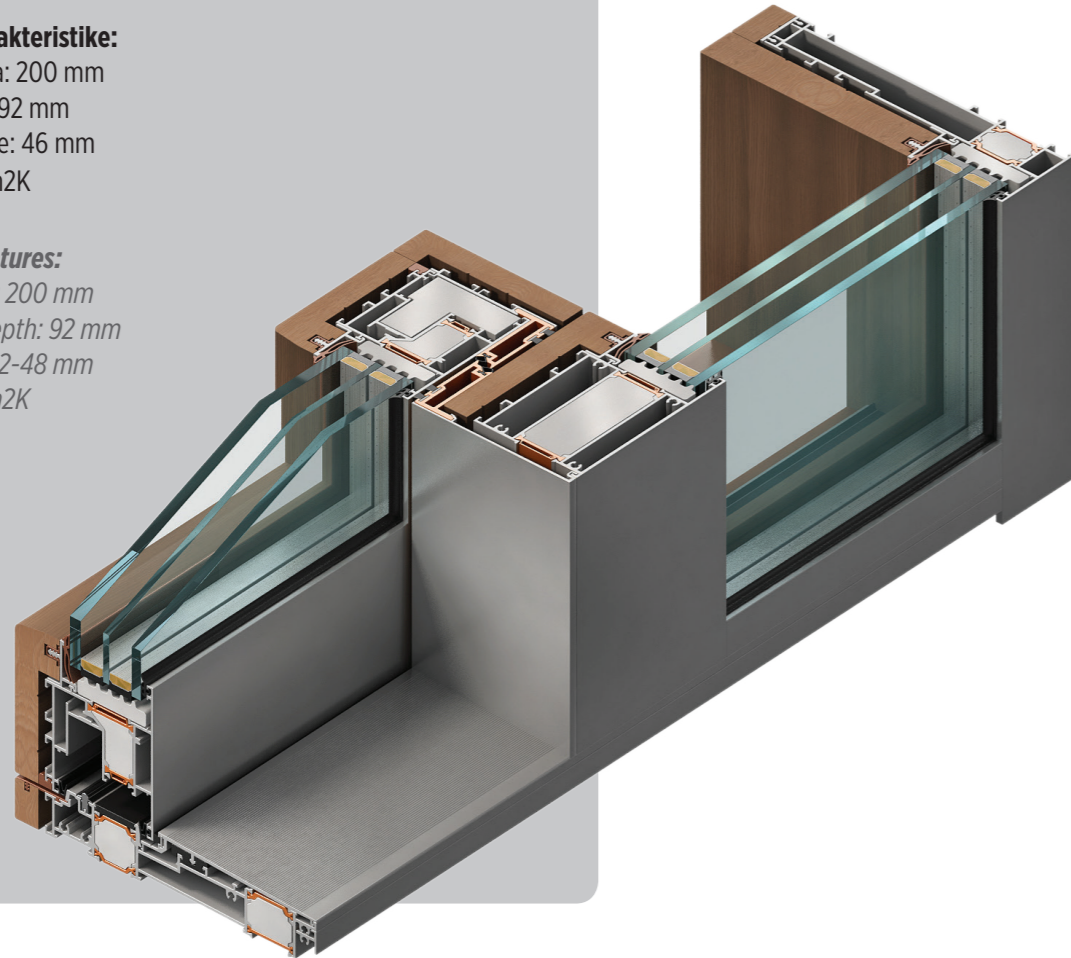
# TERMO 200 DA

**Tehničke karakteristike:**

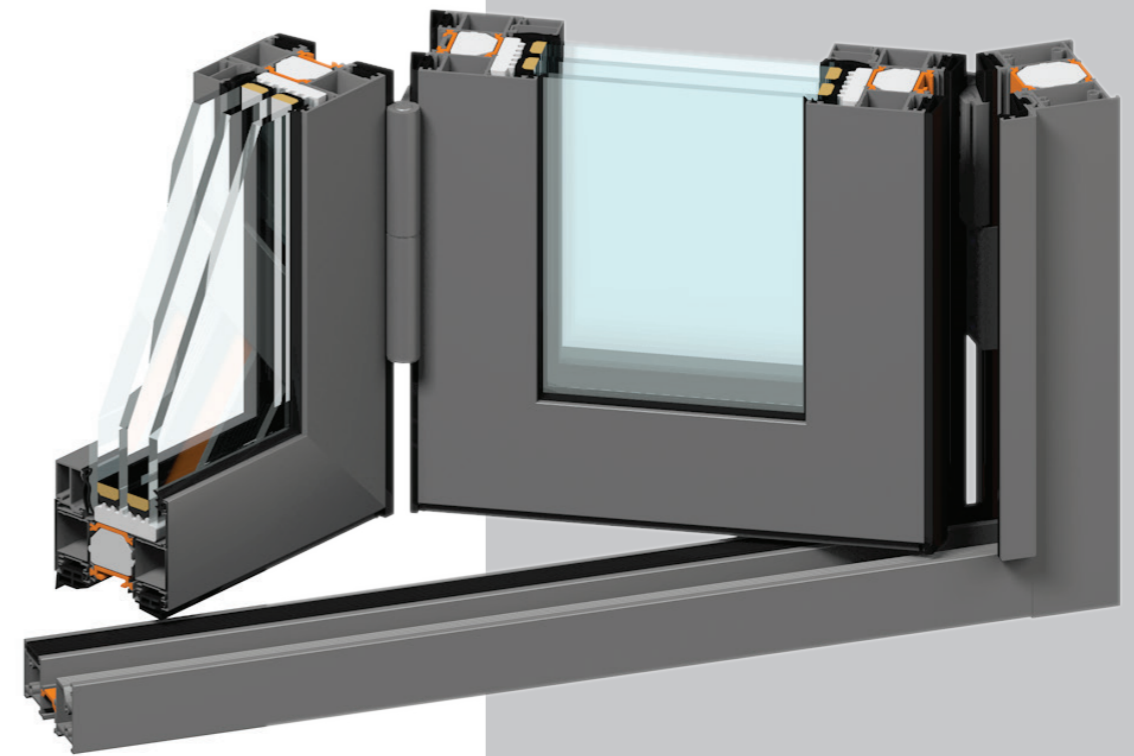
Dubina okvira: 200 mm  
 Dubina krila: 92 mm  
 Dubina ispune: 46 mm  
 $U_d \geq 1.0 \text{ W/m}^2\text{K}$

**Technical features:**

Frame depth: 200 mm  
 Sash/wing depth: 92 mm  
 Infill depth: 42-48 mm  
 $U_d \geq 1.0 \text{ W/m}^2\text{K}$



# TERMO 80 HD

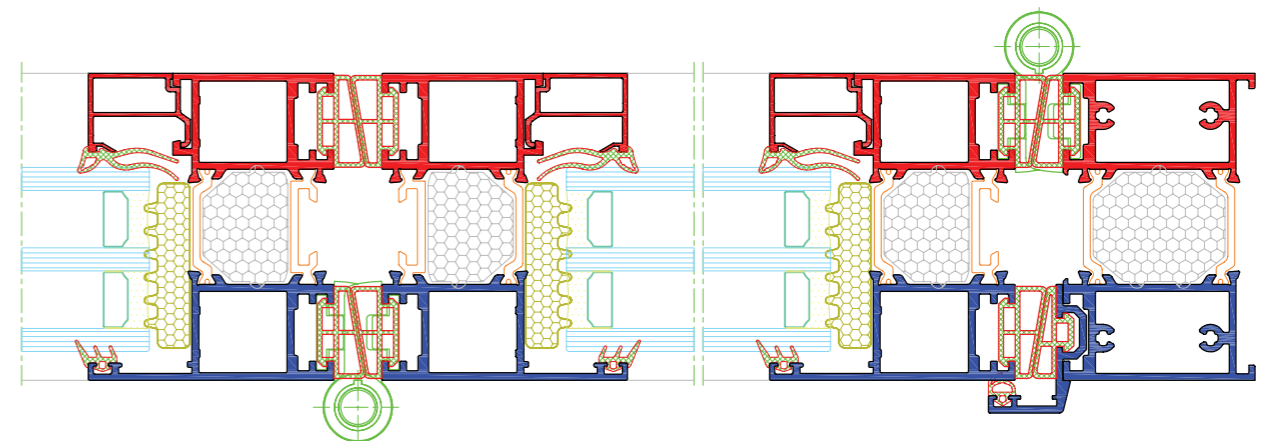
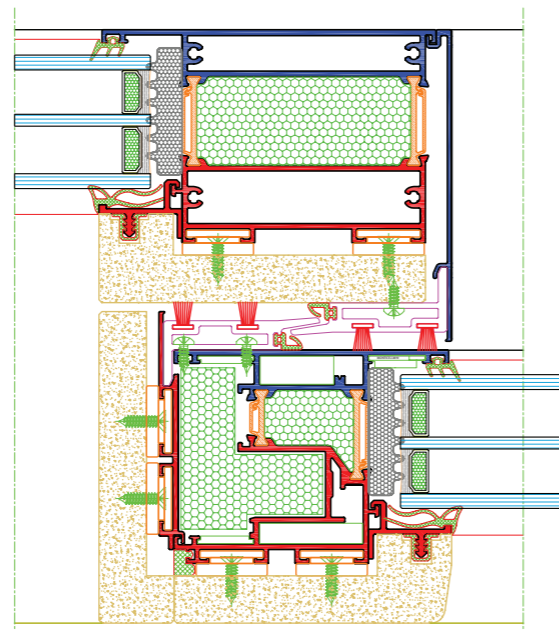
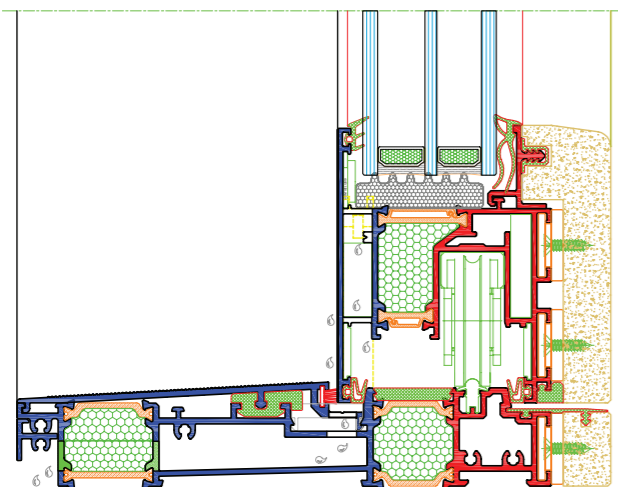


**Tehničke karakteristike:**

Dubina okvira: 80 mm  
 Dubina krila: 80 mm  
 Dubina ispune: 24 - 68 mm  
 $U_w \geq 1.2 \text{ W/m}^2\text{K}$

**Technical features:**

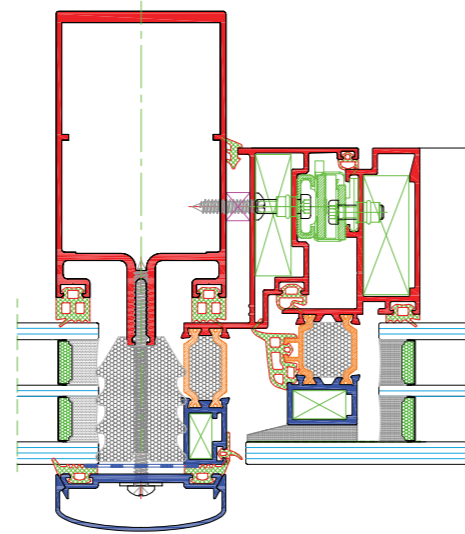
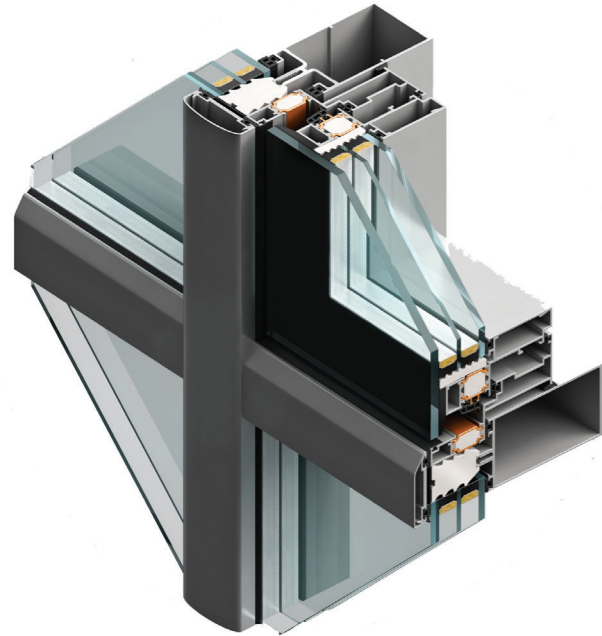
Frame depth: 80 mm  
 Sash/wing depth: 80 mm  
 Infill depth: 24 - 68 mm  
 $U_w \geq 1.2 \text{ W/m}^2\text{K}$





**FASADNI SISTEMI**  
***FACADE SYSTEMS***

# 60 K



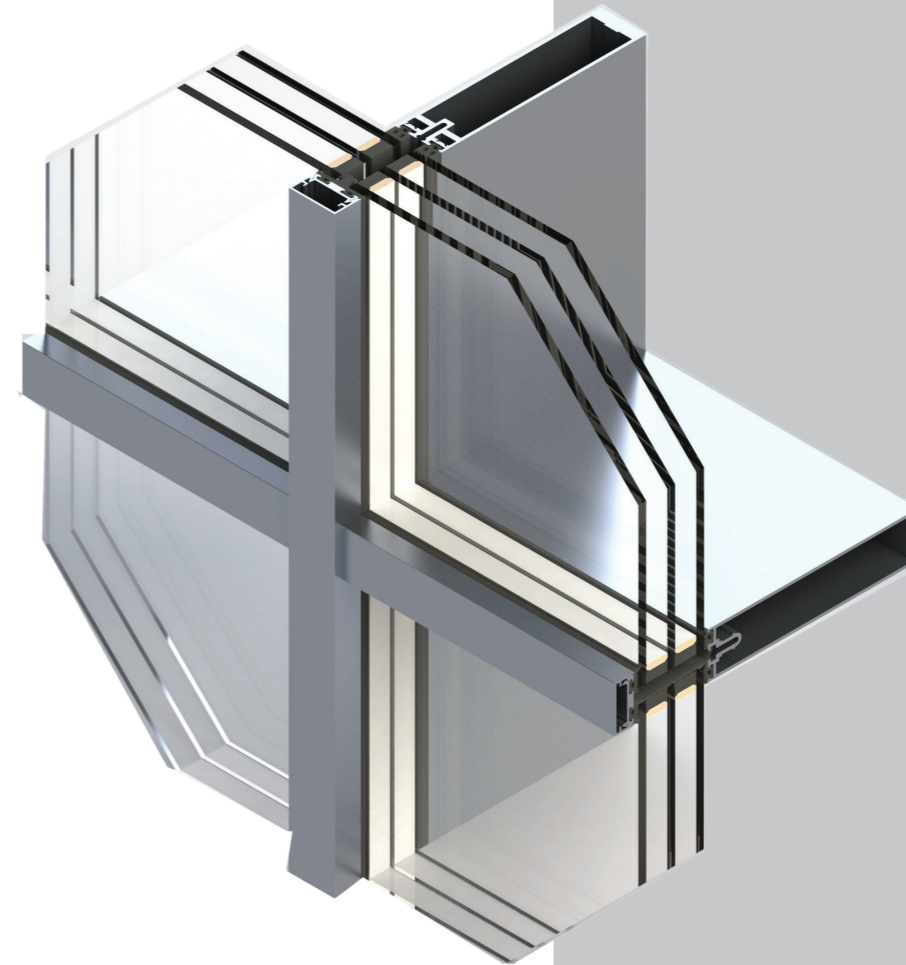
**Tehničke karakteristike:**

Dubina okomice: 88-270 mm  
 Širina okomice: 60 mm  
 Vidljiva širina poklopne letvice: 60 mm  
 $U_w \geq 0.7 \text{ W/m}^2\text{K}$

**Technical features:**

Mullion depth: 88 - 270 mm  
 Mullion width: 60 mm  
 Visible cap width: 60 mm  
 $U_w \geq 0.7 \text{ W/m}^2\text{K}$

# F35



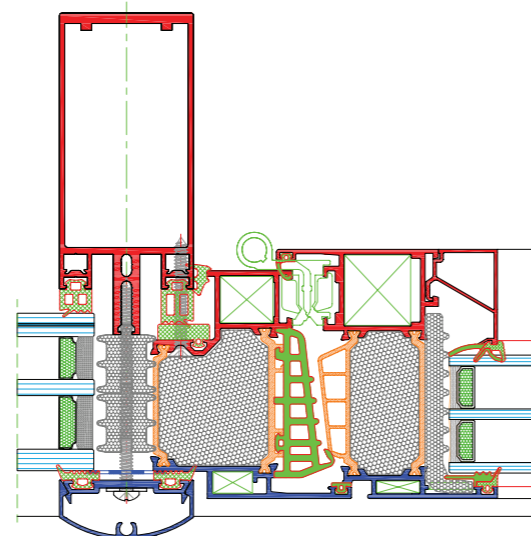
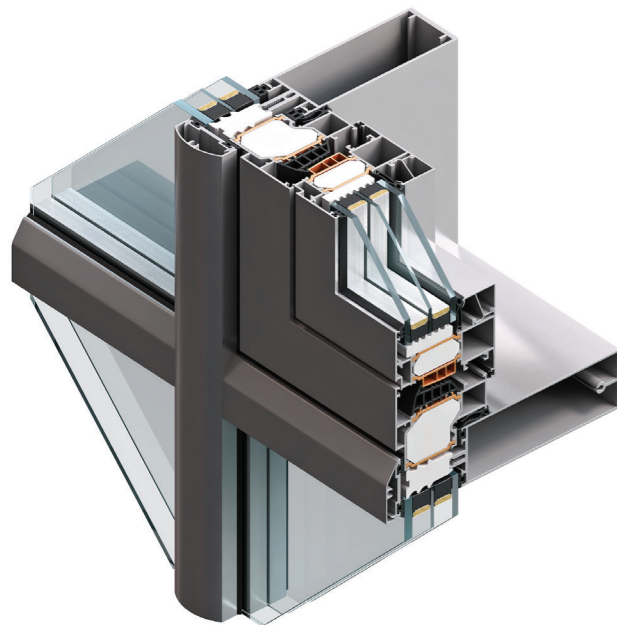
**Tehničke karakteristike:**

Dubina okomice: 156 mm  
 Širina okomice: 35 mm  
 $U_f \geq 0.81 \text{ W/m}^2\text{K}$

**Technical features:**

Mullion depth: 156 mm  
 Mullion width: 35 mm  
 $U_f \geq 0.81 \text{ W/m}^2\text{K}$

# 50 FK

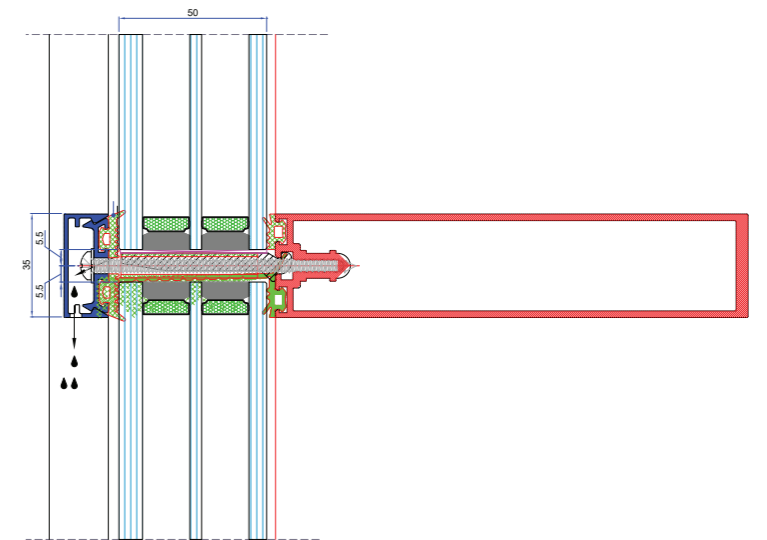
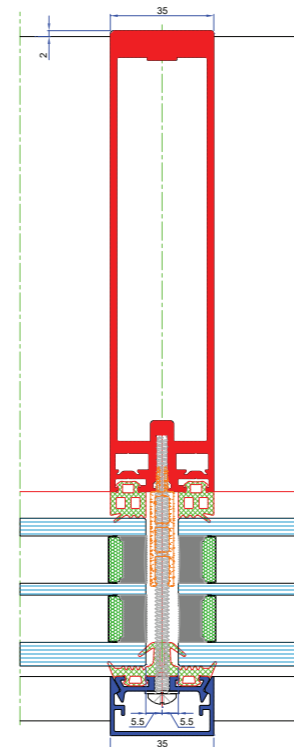


**Tehničke karakteristike:**

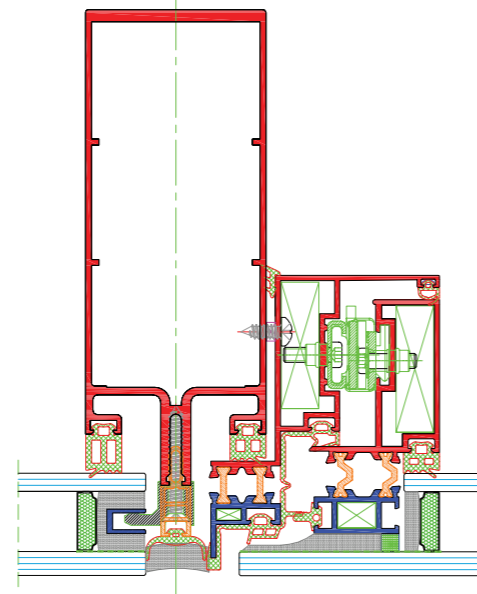
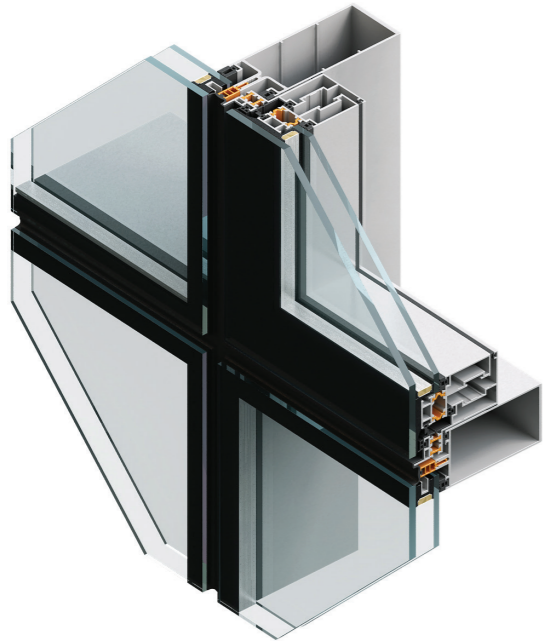
Dubina okomice: 88-270 mm  
 Širina okomice: 50 mm  
 Vidljiva širina poklopne letvice: 50 mm  
 $U_w \geq 0.7 \text{ W/m}^2\text{K}$

**Technical features:**

Mullion depth: 88 - 200 mm  
 Mullion width: 50 mm  
 Cap width: 50 mm  
 $U_w \geq 0.7 \text{ W/m}^2\text{K}$



# 60 S

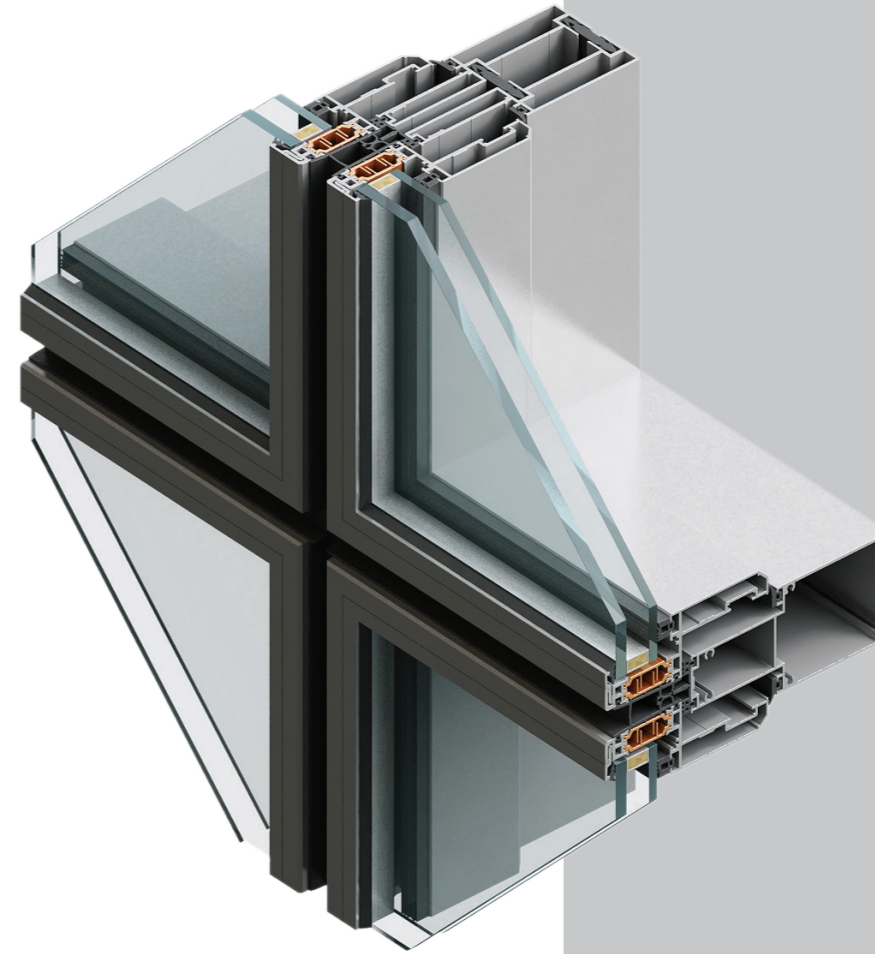
**Tehničke karakteristike:**

Dubina okomice: 88 - 270 mm  
Širina okomice: 60 mm  
Vidljiva fuga: 20 mm  
 $U_w \geq 0.7 \text{ W/m}^2\text{K}$

**Technical features:**

Mullion depth: 88 - 270 mm  
Mullion width: 60 mm  
Visible groove: 20 mm  
 $U_w \geq 0.7 \text{ W/m}^2\text{K}$

# 70 E

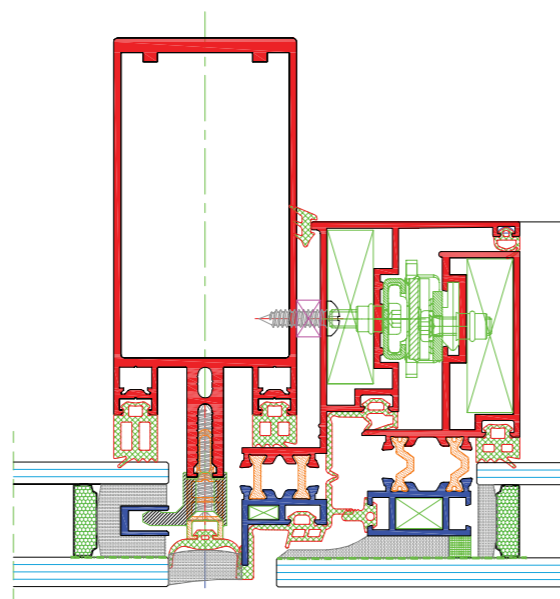
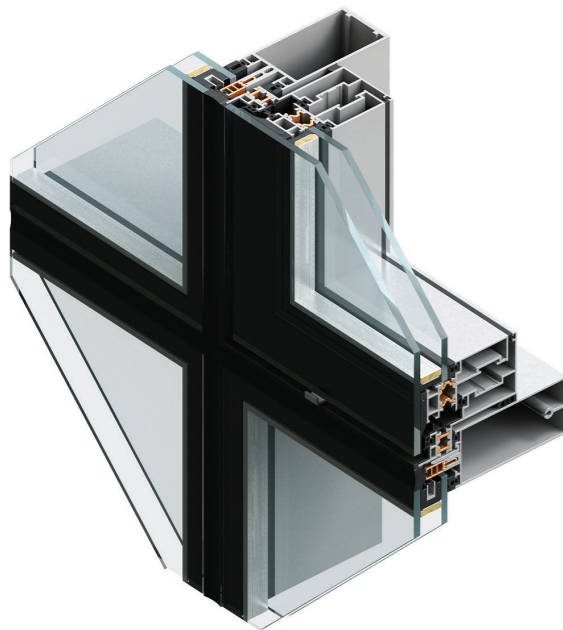
**Tehničke karakteristike:**

Dubina okomice: 143 - 205 mm  
Širina okomice: 70 mm  
Vidljiva fuga: 20 mm  
 $U_w \geq 1.7 \text{ W/m}^2\text{K}$

**Technical features:**

Mullion depth: 143 - 205 mm  
Mullion width: 70 mm  
Visible groove: 20 mm  
 $U_w \geq 1.7 \text{ W/m}^2\text{K}$

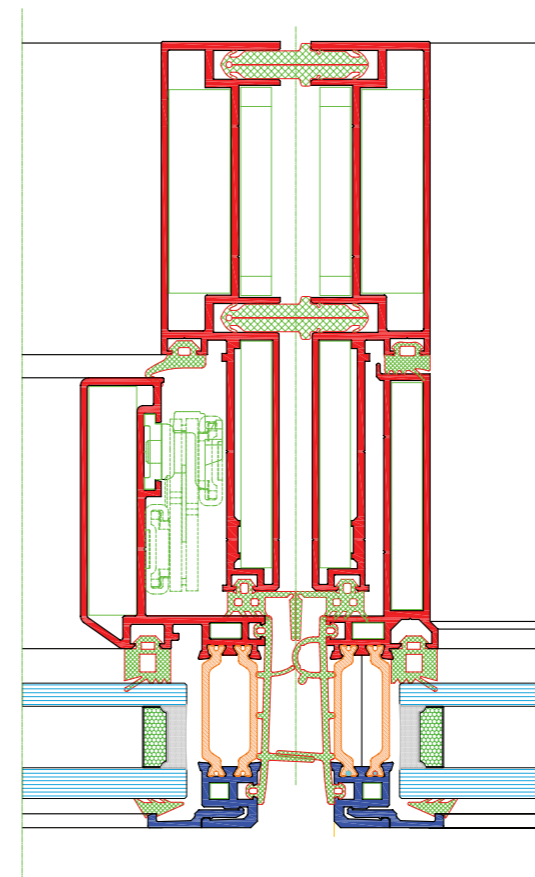
# 50 FS

**Tehničke karakteristike:**

Dubina okomice: 88 - 270 mm  
Širina okomice: 50 mm  
Vidljiva fuga: 20 mm  
 $U_w \geq 0.7 \text{ W/m}^2\text{K}$

**Technical features:**

Mullion depth: 88 - 200 mm  
Mullion width: 50 mm  
Visible groove: 20 mm  
 $U_w \geq 0.7 \text{ W/m}^2\text{K}$



Prateći nove trendove u gradnji objekata koji zahtijevaju što kraće vrijeme izrade i montaže, a samim time i fasada na njima, FEAL je razvio tip element fasade 70E.

**Osnovne karakteristike ove fasade su:**

1. Konstrukcijska širina profila je 70 mm
2. Mogućnost izvedbe u polustrukturalnoj izvedbi
3. Izrada elemenata u potpunosti se odvija u radionici
4. Izrada gotovih elemenata skraćuje vrijeme potrebno za montažu fasade.

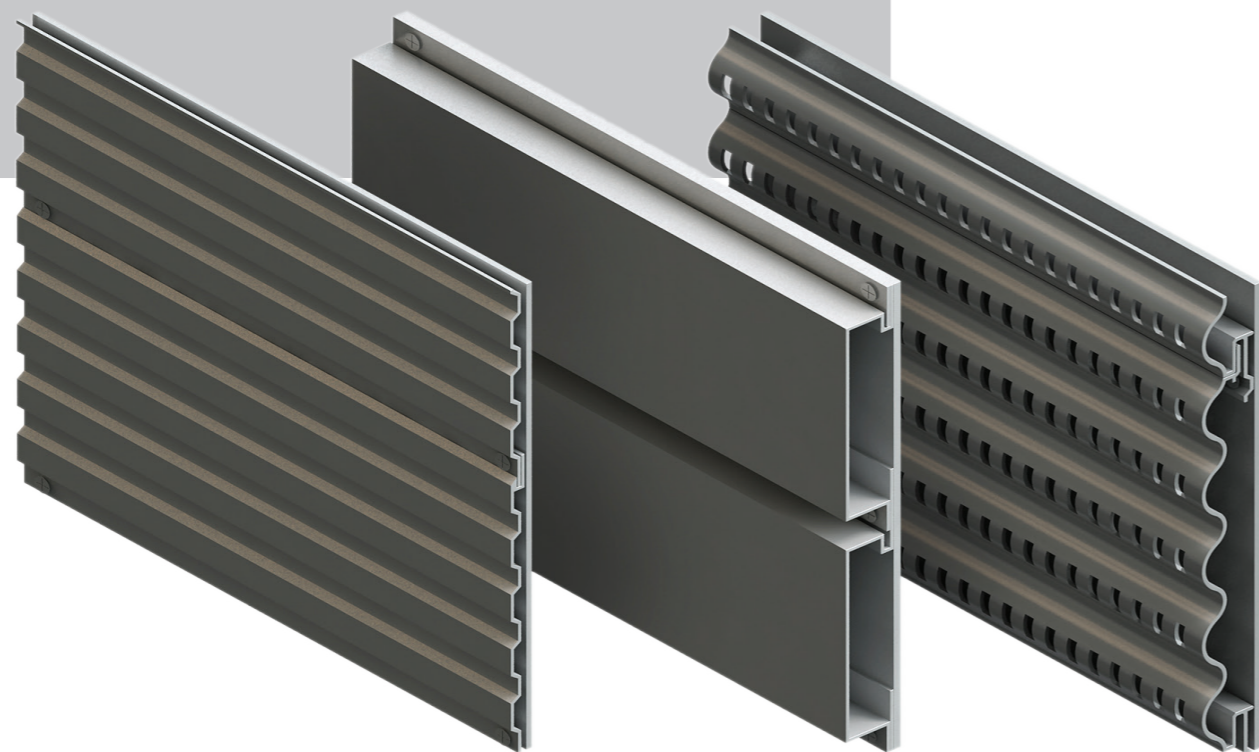
Following the new trends in the construction of buildings that requires shortest possible time of constructing and assembling and therefore facades on them, FEAL developed element facade 70E.

**Main features of this facade are:**

1. Construction width of the profile is 70 mm
2. Possibility of structural and semi structural versions
3. Manufacture of elements is completely performed in the plant
4. Manufacture of prefabricated or finished elements shortens the time required for facade assembling.

# ALUMINIJSKA VENTILIRANA FASADA

VENTILATED ALUMINIUM FACADE

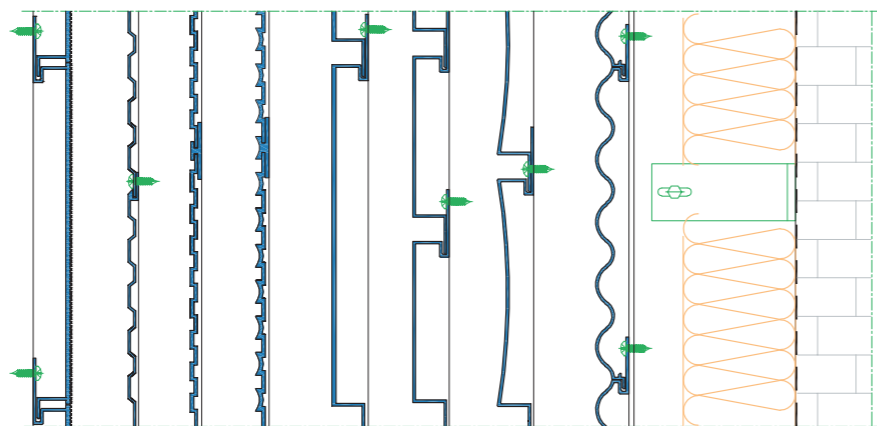


## Tehničke karakteristike:

- primarni aluminij, legure EN AW - 6060
- površinska zaštita je eloksanje ili plastificiranje i dekoracija postupkom sublimacije

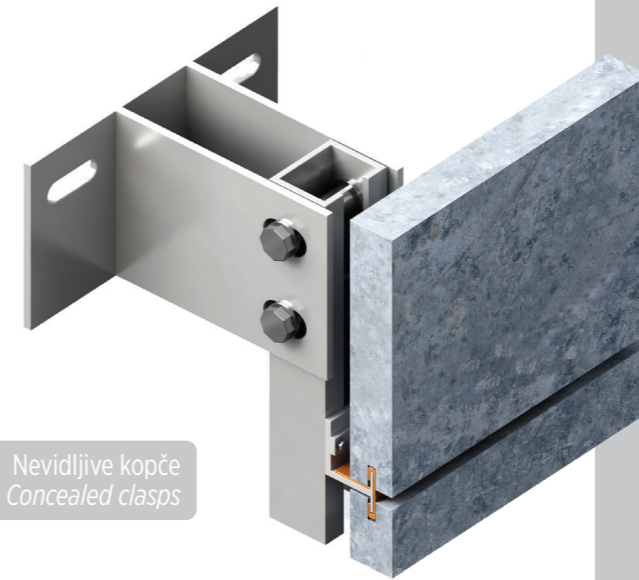
## • Technical features:

- primary aluminium, alloy EN AW - 6060
- surface protection anodisation or powder coating and decoration with sublimation technology

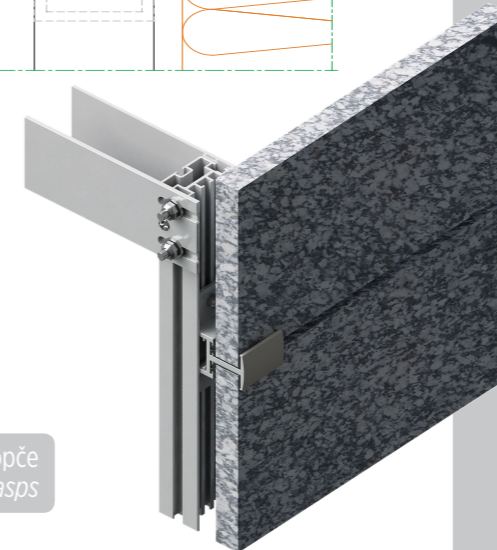
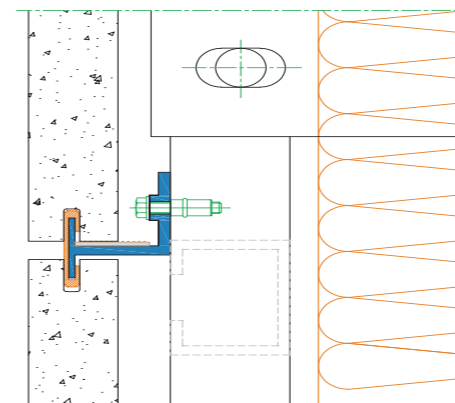


# VENTILIRANA FASADA S KAMENIM OBLOGAMA

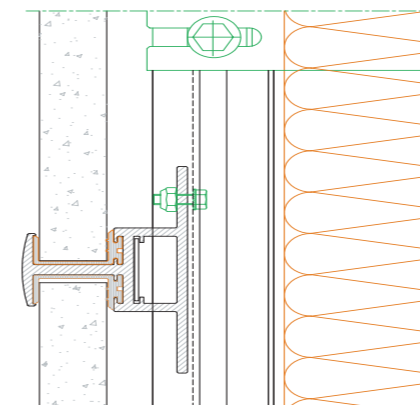
VENTILATED FACADE WITH STONE CLADDING



Nevidljive kopče  
Concealed clasps



Vidljive kopče  
Visible clasps



Ove vrste fasade su našle primjenu u svim slučajevima kada je potrebno termički i dekorativno dodatno obložiti betonska platna, ciglene površine i bilo koje vrste zatvorenih zidova i površina, te na taj način dati konačan izgled objektu. Različiti zahtjevi investitora, projekatana kao i samih objekata na kojima je potrebno montirati ove fasade doveli su do razvoja različitih vrsta ventilirajućih fasada.

*Ventilated facades are mainly used as an additional cover for concrete walls, brick walls and other surface for better insulation and improved esthetics. Different requirements of our customers have driven us to develop various solutions for ventilated facades.*

## Tehničke karakteristike:

- Aluminijska podkonstrukcija
- Debljina kamena može biti 20, 25 i 30 mm
- Širina vodoravne fuge je 10 mm
- Vodoravni raster nosive podkonstrukcije 600, 900 i 1200 mm

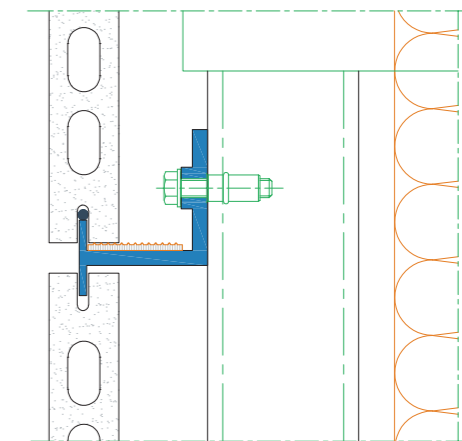
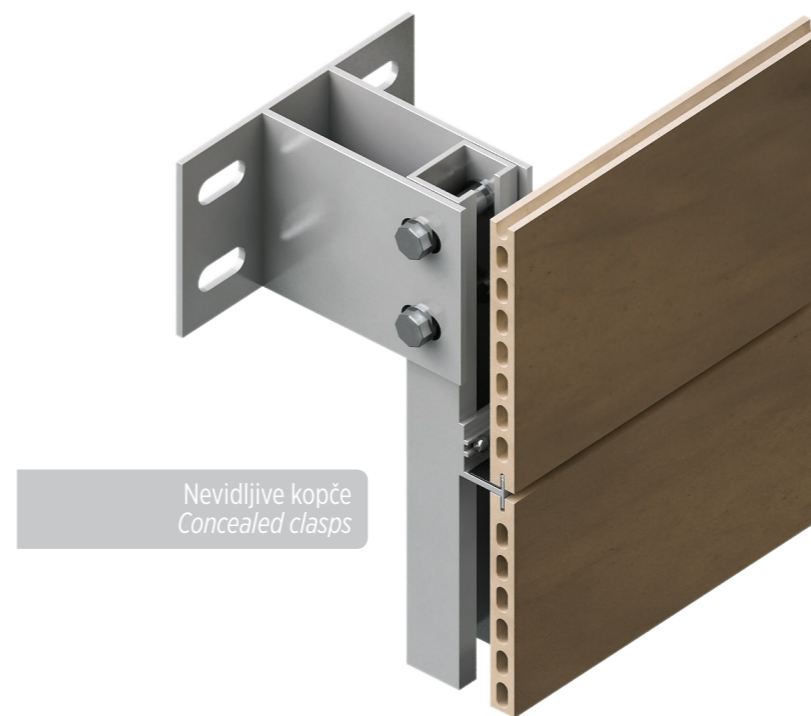
## • Technical features:

- Aluminium subconstruction
- Stone tile thickness: 20, 25 and 30 mm
- Gap between tiles: 10 mm
- Horizontal span of subconstruction: 600, 900 and 1200 mm



# VENTILIRANA FASADA S KERAMIČKIM OBLOGAMA

## VENTILATED FACADE WITH CERAMIC CLADDING

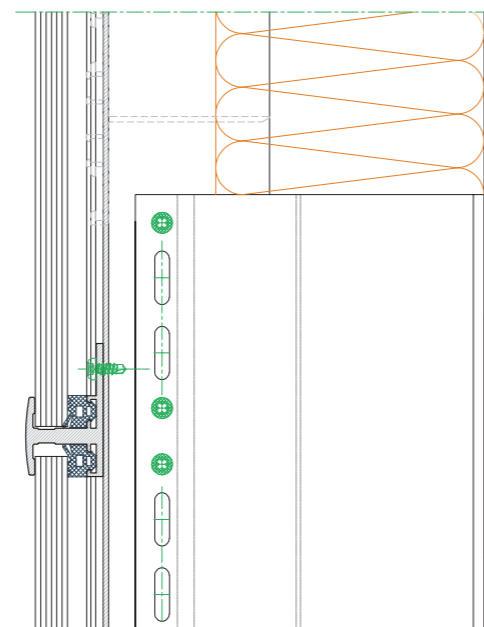
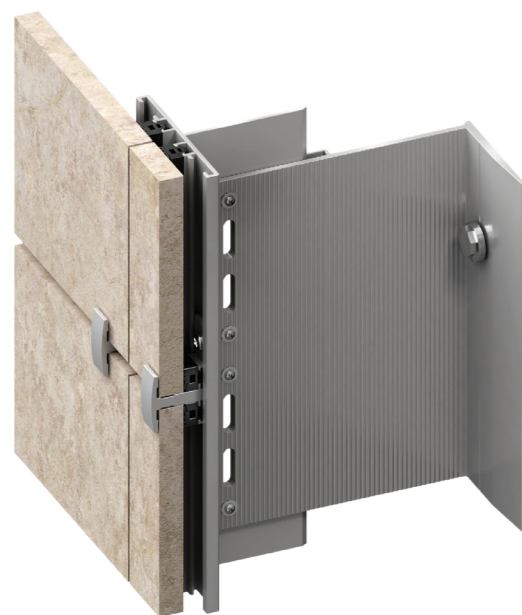


### Tehničke karakteristike:

Keramička fasada sa nevidljivim kopčama  
Horizontalna fuga 8 mm  
Vertikalna fuga 2 mm  
Dimenzija keramike 405x1000 (800,900)  
Širina keramičke ploče 19.5 mm  
Aluminijska podkonstrukcija

### Technical features:

Ceramic facade with concealed clasps  
Horizontal fugue 8 mm  
Vertical groove 2 mm  
Ceramic dimensions 405x1000 (800,900)  
Width of ceramic plate 19.5mm  
Aluminium subconstruction



### Tehničke karakteristike:

Keramička fasada s vidljivim kopčama  
Horizontalna fuga: 10mm  
Debljina keramike: 8-16mm  
Aluminijska podkonstrukcija

### Technical features:

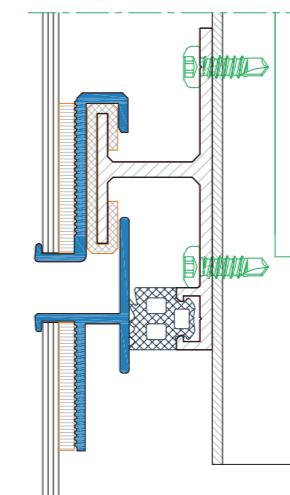
Ceramic facade with visible clasps  
Horizontal and vertical groove 10 mm  
Ceramic thickness: 8-16mm  
Aluminium subconstruction

### Tehničke karakteristike:

Keramika debljine 3 mm  
Ljepljenje na al podkonstrukciju  
Mogućnost zamjene keramičke ploče  
Horizontalna fuga 10 mm  
Aluminijska podkonstrukcija

### Technical features:

Ceramic thickness 3mm  
Gluing to al. subconstruction  
Possibility of replacing the tiles  
Horizontal groove 10 mm  
Aluminium subconstruction





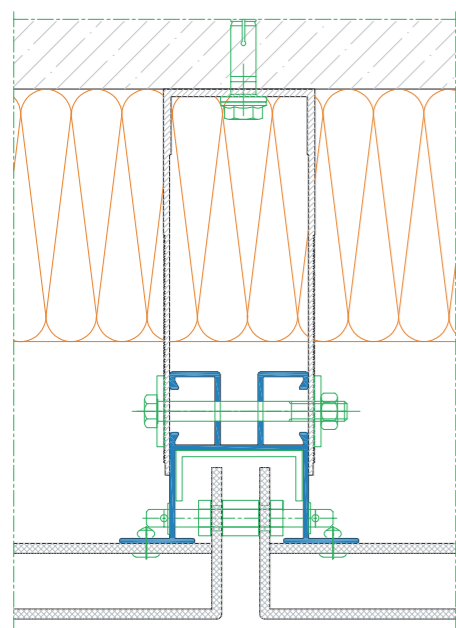
# VENTILIRANA FASADA S KOMPOZITNIM OBLOGAMA

VENTILATED FACADE WITH COMPOSITE CLADDING

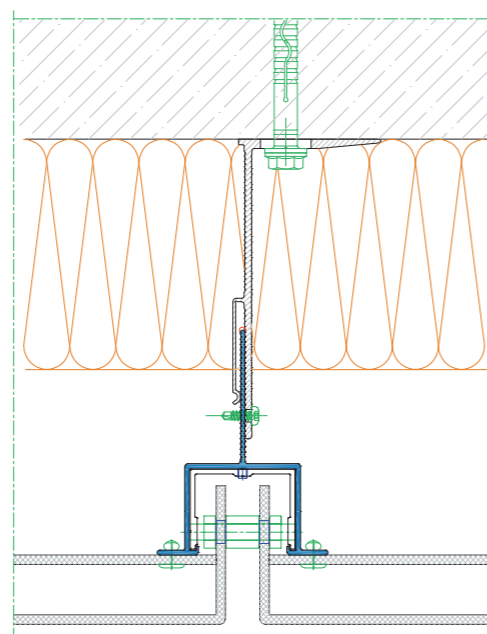


# ZIMSKI VRT

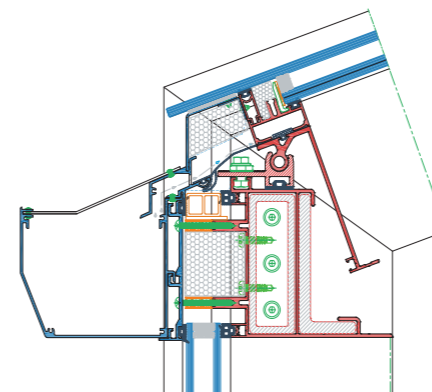
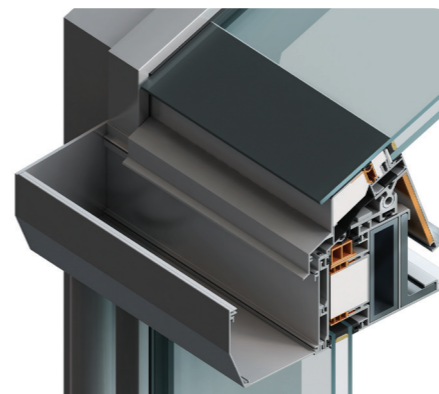
WINTER GARDEN



**Tehničke karakteristike:**  
Aluminijska podkonstrukcija  
Debljina panela: 4 – 6 mm



**Technical features:**  
Aluminium subconstruction  
Panel thickness: 4 – 6 mm



Kada se pojavi potreba za proširenjem životnog prostora ili se želi osigurati prostor za odmor i rekreaciju zimski vrt je idealno rješenje. Povezivanje životnog-unutarnjeg prostora sa prirodom-vanjskim prostorom glavna je odlika ovog sistema. Aluminijski profili s prekinutim toplinskim mostom u kombinaciji s Izo staklima omogućavaju ugodan boravak u ovim prostorijama tijekom cijele godine. Puno svjetla koje omogućavaju velike staklene plohe dovode u unutarnji prostor potrebnu sunčevu energiju. Iako konstrukcije zimskih vrtova imaju svoje prednosti u svako doba godine ipak su tijekom zimskih razdoblja ove prednosti najistaknutije.

*When the need to expand the living space arises or wish to provide space for recreation winter garden is ideal solution. Connecting of indoor living space with nature - outdoor space is the main characteristic of this system. Aluminium profiles with thermal barrier, combined with insulated glass will make your stay pleasant in these areas throughout the year. Lots of light that allow large glass surfaces brings into the interior space required solar energy. Although construction of winter gardens have their benefits at any time of the year, however, during the winter period, they are the most prominent ones.*

# FEAL FNE

Potkonstrukcijski sistemi za fotonaponske elektrane  
Substructure systems for photovoltaic power plants

Sunce je neiscrpan izvor energije. U samo 2 minute Sunce na naš planet emitira toliko energije koliko je dovoljno cijelom čovječanstvu za 24 sata. Naravno, za korištenje solarne energije postoje i određena ograničenja. Prvenstveno se to odnosi na geografski položaj, godišnja doba, doba dana te meteorološke uvjete. Napredak solarne tehnologije te aktualne energetske (ne)prilike utjecale su na sve rašireniju upotrebu sunčeve energije.

Solarnom tehnologijom se sunčeva energija pretvara u iskoristivu energiju. Danas najrasprostranjeniji oblik solarne tehnologije su fotonaponske elektrane.

Fotonaponskim elektranama se sunčeva energija pretvara u električnu energiju koja se koristi za potrebe domaćinstva te u poslovnim subjektima. Prednosti upotrebe fotonaponskih elektrana su brojne. Izdvojiti ćemo samo neke, kao što su, energetska neovisnost i smanjenja troškova energije te nepostojanje štetnog utjecaja na okoliš i klimu.

Solarna energija je postala jedan od najvažnijih izvora energije. Prvenstveno, jer korištenje obnovljivih izvora energije pozitivno utječe na održivi razvoj i ekonomski rast. Upravo zbog svega toga FEAL je razvio FNE sisteme za fotonaponske elektrane za montažu na zemlji i za montažu na krovovima.

Svi FEAL-ovi FNE sistemi dizajnirani su za brzu, jednostavnu i čistu montažu na licu mjesta, bez dodatnih zahtjeva za obradom. Elementi konstrukcije izrađeni su od aluminijske legure EN AW-6063 i EN AW-6005.

*The sun is an inexhaustible source of energy. In just 2 minutes, the Sun emits as much energy as is enough for all of humanity for 24 hours. Of course, there are certain restrictions for the use of solar energy. Primarily, this refers to geographical location, seasons, time of day and meteorological conditions. The progress of solar technology and current energy conditions have influenced the increasingly widespread use of solar energy.*

*Solar technology converts solar energy into usable energy. Today, the most widespread form of solar technology is photovoltaic power plants.*

*Photovoltaic power plants convert solar energy into electricity that is used for household and business purposes. The advantages of using photovoltaic power plants are numerous. We will single out only a few, such as energy independence and reductions in energy costs without harmful impact on the environment and climate.*

*Solar energy has become one of the most important sources of energy. Primarily, because the use of renewable energy sources has a positive effect on sustainable development and economic growth. It is precisely because of all this that FEAL has developed FNE systems for photovoltaic power plants for mounting on the ground and for mounting on roofs.*

*All FEAL's FNE systems are designed for quick, easy and clean on-site assembly, with no additional machining requirements. Structural elements are made of aluminum alloy EN AW-6063 and EN AW-6005.*



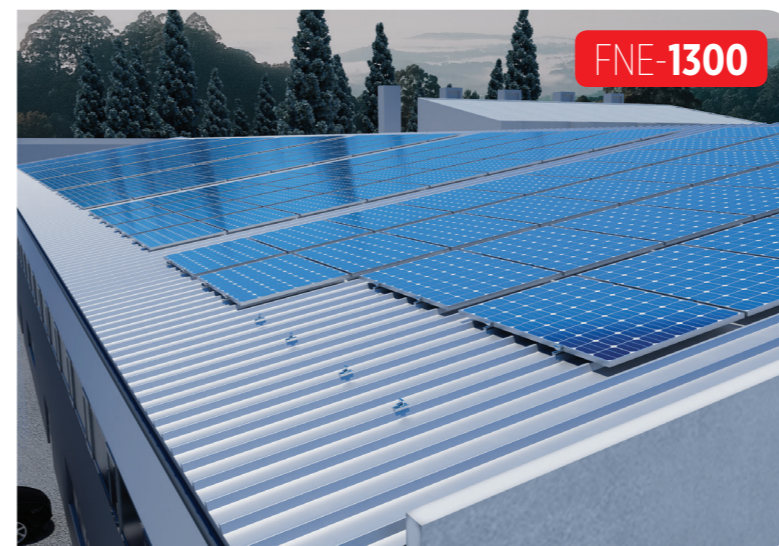
FNE-1100 sistem sadržava aluminijsku potkonstrukciju dizajniranu za stvaranje modularnih potpornih struktura s mogućnošću postavljanja na krovove obiteljskih kuća za različite vrste konvencionalnih pokrova. Korišteni materijali odabrani su kako bi se osigurala pouzdanost i trajnost tijekom vremena.

*The FNE-1100 system contains an aluminum substructure designed to create modular support structures with the possibility of being placed on the roofs of family houses for different types of conventional coverings. The materials used are selected to ensure reliability and durability over time.*



FNE-1200 je sistem razvijen za montažu fotonaponskih elektrana na ravnim krovovima. Ovaj je sistem podijeljen u dvije cjeline. Prva je montaža potkonstrukcije s nagibom od 10°, a drugi je montaža potkonstrukcije nagiba od 11° do 35°.

*FNE-1200 is a system developed for mounting photovoltaic power plants on flat roofs. This system is divided into two units. The first is the installation of the substructure with a slope of 10°, and the second is the installation of the substructure with a slope of 11° to 35°.*



FNE-1300 je sistem razvijen za montažu fotonaponskih elektrana na krovovima industrijskih hala.

*FNE-1300 is a system developed for mounting photovoltaic power plants on the roofs of industrial halls.*



FNE-2000 je sistem razvijen za montažu na zemlji i različitim tipovima temeljne konstrukcije.

*FNE-2000 is a system developed for mounting on the ground and different types of foundation construction.*

ZAŠTITA OD **SUNCA**  
*SUN PROTECTION*





# GH 40

## HARMONIKA OTVORI/ FOLDING OPENINGS

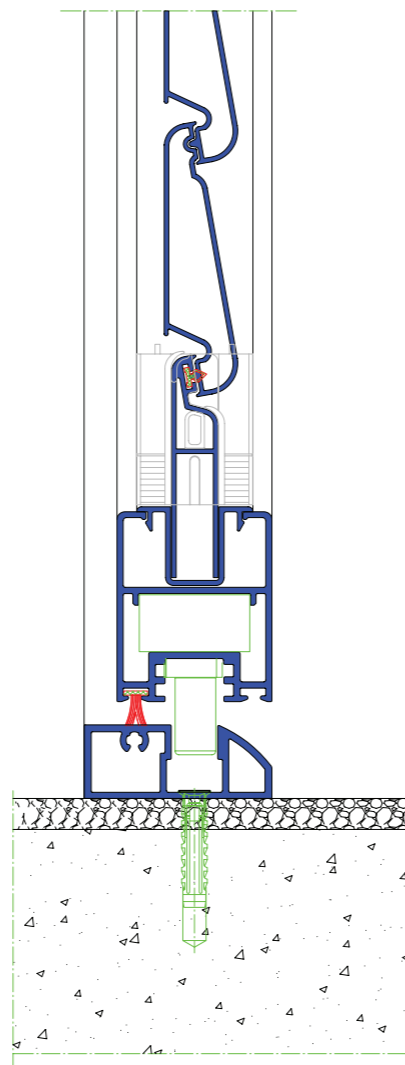


### Tehničke karakteristike:

Dubina okvira: 48.5 mm  
 Dubina krila: 40 mm  
 Okovi: Master  
 Ispuna: Pomične i nepomične lamele, staklo, perforirani lim, panel itd.

### Technical features:

Frame depth: 48.5 mm  
 Sash depth: 40 mm  
 Groove: Master  
 Sash infill: Movable or fixed slats, glass, perforated metal, panel etc.

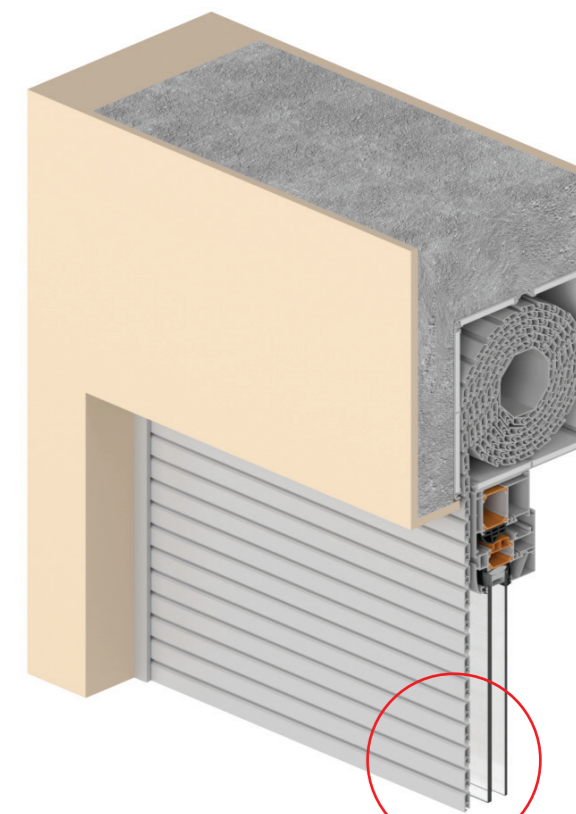


# SP SJENILA ROLLER SHUTTER

Sistem SP sjenila je namijenjen za zaštitu protiv sunčeve svjetlosti i atmosferskih utjecaja. Sistem zatamnjuje prostoriju, pruža privatnost i ima moderan, atraktivan i elegantan izgled. Sjenila će obeshrabrati uljeze i pružiti zaštitu od provale što ih čini idealnim za privatnu i komercijalnu upotrebu. **SP sjenila su dostupna u tri veličine lamela (10, 20, 50 mm)**. Sistem može biti montiran na sve tipove prozora i vrata, a montaža je brza i jednostavna. Lamelle su dostupne u širokoj paleti boja (u boji prema RAL karti, eloksaža te imitacija drveta). SP sjenila mogu biti pogonjene ručno ili pomoću motora. Posebno su pogodne za prizemne prozore ili vrata na privatnim, prodajnim, ili komercijalnim objektima.

### Tehničke karakteristike:

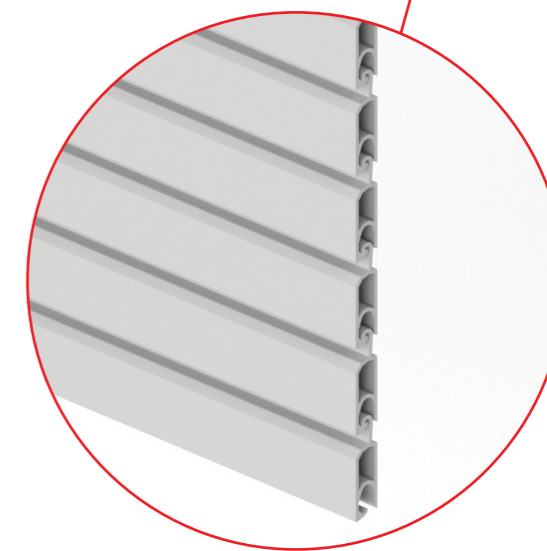
- maksimalna visina do 3000 mm
- široki raspon RAL boja
- 3 veličine lamela (10, 20, 50 mm)
- 8 različitih tipova vodilica
- 6 različitih tipova završnih lamela
- tihi rad s naglaskom na minimalnu buku i vibraciju



*The SP blind system is intended for protection against sunlight and atmospheric influences. The system darkens the room, provides privacy and has a modern, attractive and elegant look. The blinds will discourage intruders and provide protection against burglary making them ideal for private and commercial use. **SP blinds are available in three slats sizes (10, 20, 50 mm)**. The system can be mounted on all types of windows and doors, and installation is quick and easy. The slats are available in a wide range of colours (in colour according to the RAL chart, anodizing and imitation wood). SP blinds can be driven manually or by motor. They are especially suitable for ground floor windows or doors on private, retail, or commercial objects.*

### Technical features:

- maximum height up to 3000 mm
- wide range of RAL colours
- 3 slats sizes (10, 20, 50 mm)
- 8 different types of guides
- 6 different types of end slats
- quiet work with emphasis on minimal noise and vibration



HARMONIKA OTVORI / FOLDING OPENINGS

SJENILA / ROLLER SHUTTERS

# FIKSNE PERGOLE

Sistem Pergola prvenstveno se koristi kao zaštita od sunca na otvorenim površinama. Pergole iz našeg asortimana odlikuju se kvalitetom, funkcionalnošću i estetikom. Mogu poslužiti kao nastavak kuće ili kao samostalna struktura s nekim specifičnim namjenama.

Budući da je aluminij vrlo otporan materijal pergole će i nakon dužeg vremena i dalje izgledati odlično i unijet će više životnog prostora u samo dvorište.

Modularni koncept nudi različita tehnološka rješenja kao što su nevidljivi spojevi, utor za LED rasvjetu itd. Čvrsta konstrukcija omogućuje visoku otpornost na vjetar i maksimalne dimenzije do 6x6x3m.

Izrađena od laganih i jednostavnih profila, omogućuje različite izvedbene tipologije. Također je omogućena ugradnja različitih sjenila kao i kliznih stijena tipa FEAL FR-18.

*The Pergola system is primarily used as protection from the sun on open areas. Pergolas from our range are characterized by quality, functionality and aesthetics.*

*They can serve as an extension of the house or as an independent structure with some specific purposes.*

*Since aluminium is a very resistant material, the pergola will still look great even after a long time and will bring more living space to the yard itself.*

*The modular concept offers various technological solutions such as invisible joints, a slot for LED lighting, etc. The solid construction enables high wind resistance and maximum dimensions of up to 6x6x3m.*

*Made of light and simple profiles, it enables different performance typologies. It is also possible to install different shades as well as FEAL FR-18 type sliding walls.*

## KARAKTERISTIKE SISTEMA:

**Dubina okvira:** 220 mm

**Dubina ispune:** do 200 mm

**Osnovni materijal:** EN AW-6060

**Površinska obrada:** DIN 17611

**Kontrola kvalitete:** DIN EN ISO 9001

## SYSTEM CHARACTERISTICS:

*Frame depth: 220 mm*

*Filling depth: up to 200 mm*

*Basic material: EN AW-6060*

*Surface treatment: DIN 17611*

*Quality control: DIN EN ISO 9001*



# FEAL GRILJE

## LOUVER SHUTTERS

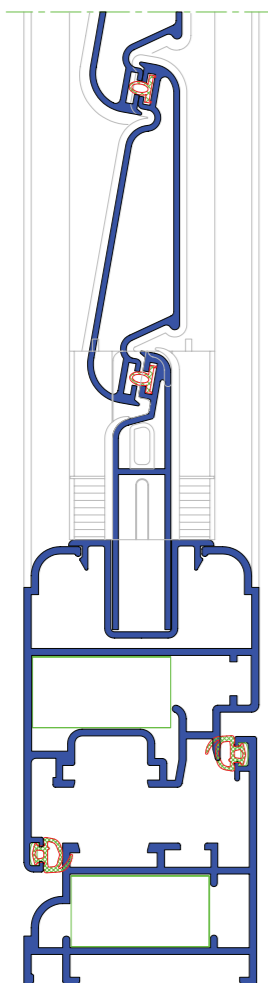
Z 40

### Tehničke karakteristike:

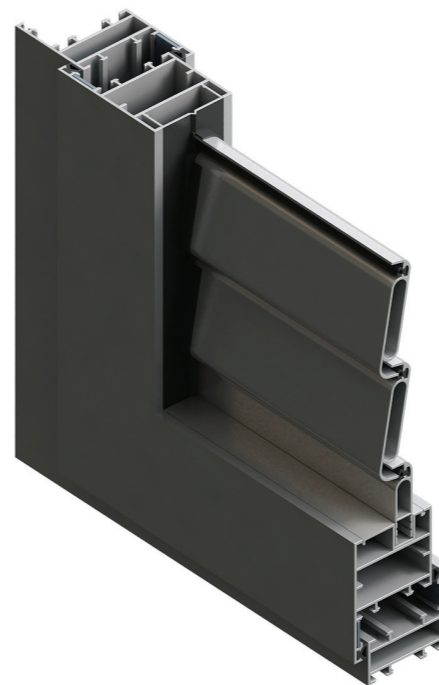
Dubina okvira: 40 i 48 mm  
Dubina krila: 48 mm  
Euro utor 15/20

### Technical features:

Frame depth: 40 and 48 mm  
Sash depth: 48 mm  
Euro groove 15/20



DALMO

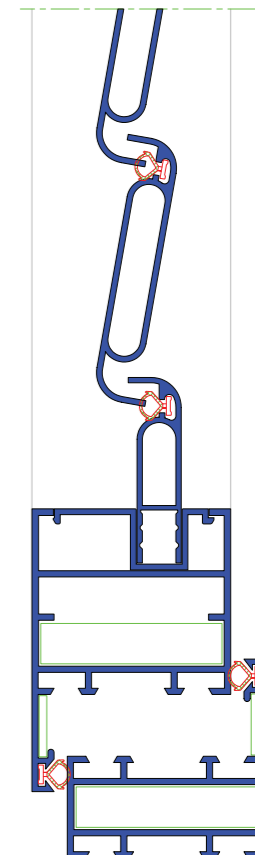


### Technical features:

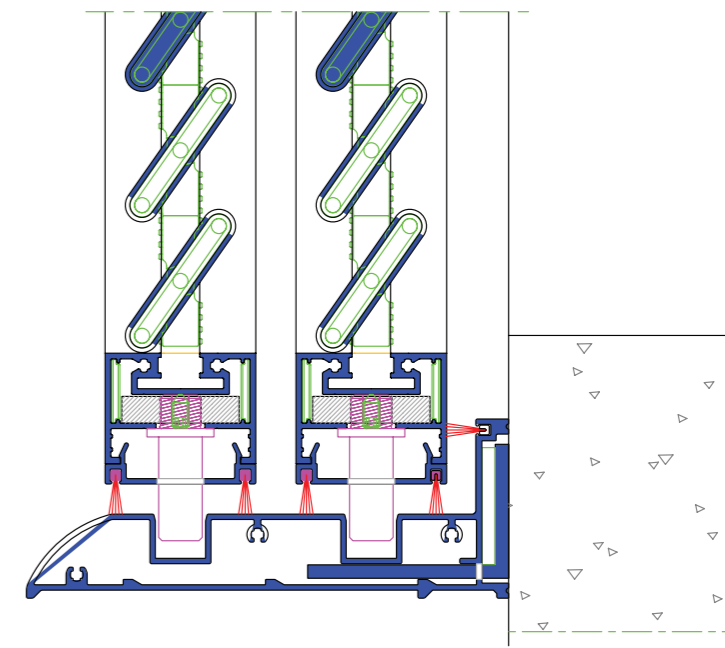
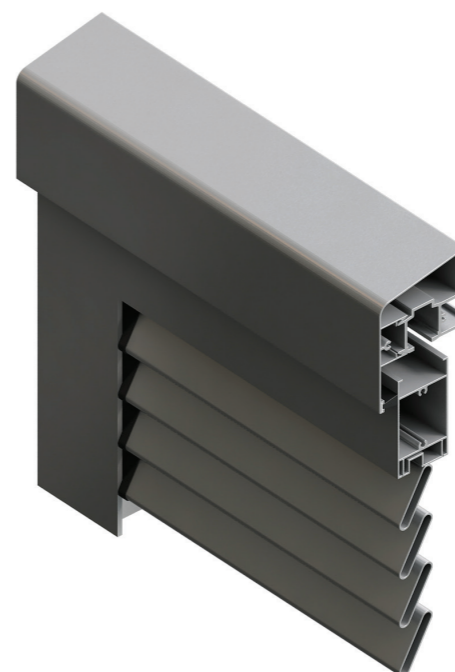
Frame depth: 45 mm  
Sash depth: 45 mm  
Overlap dimension: 8 mm  
24mm groove

### Tehničke karakteristike:

Dubina okvira: 45 mm  
Dubina krila: 45 mm  
Mjera preklopa: 8 mm  
Utor 24mm



KLIZNE GRILJE



# FIKSNI BRISOLEJI I ŽALUZINE

## FIXED SUN BREAKERS AND SHUTTERS

**Brisoleji** se koriste za "zasjenjivanje" većih površina, pa čak i čitavih fasada, a mogu biti fiksni ili pokretni. Kod brisoleja lamele mogu biti orijentirane horizontalno ili vertikalno, a upravljanje je na prekidač ili daljinskim upravljačem.

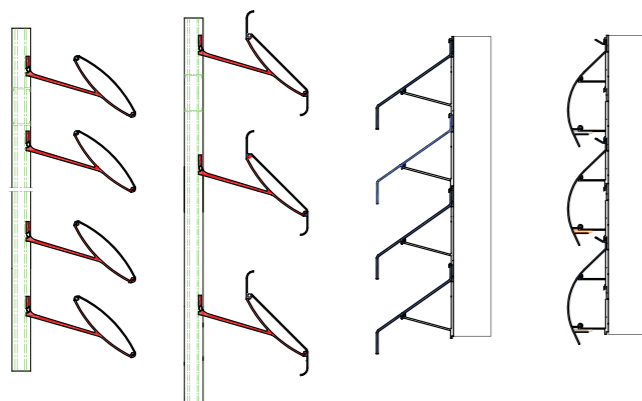
*Sun breakers* are usually utilized for bigger areas, even on whole perimeter of curtain walls. These products have a more solid structure than louver shutters and can be fixed and adjustable. Adjustable sunbreakers can be oriented horizontally and vertically and they are driven by motor which can be controlled by switch or remote controller.

### Tehničke karakteristike:

Veličina lamela: 140 i 220 mm  
Mogućnost montaže lamele u 4 položaja, 45, 60, 75, 90 stupnjeva

### Technical features:

Dimension of slats: 140 and 220 mm  
Possibility of assembly of slats in 4 positions: 45, 60, 75, 90 degrees

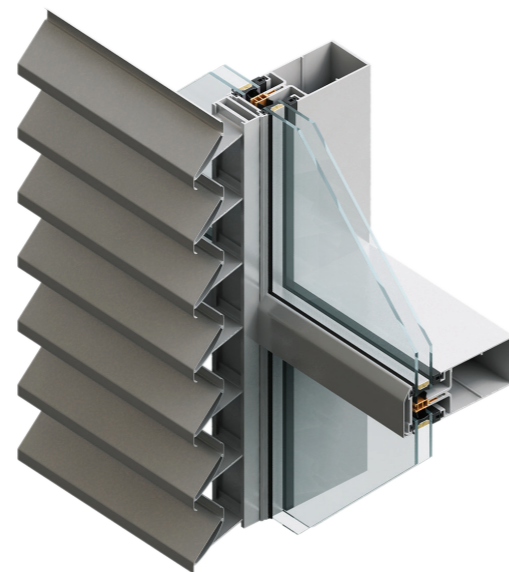
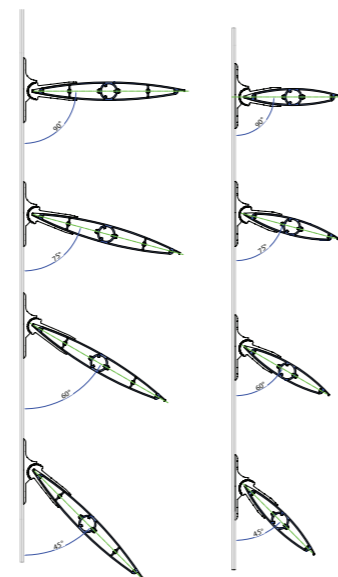


### Tehničke karakteristike:

Veličina lamela: 112,5, 118 i 149 mm

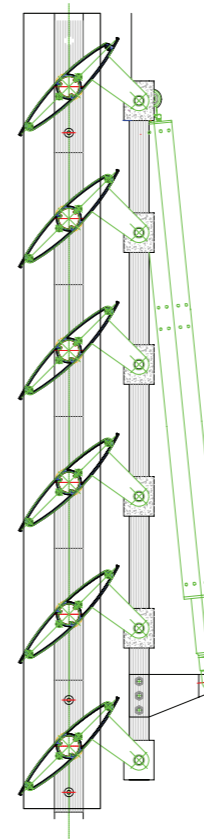
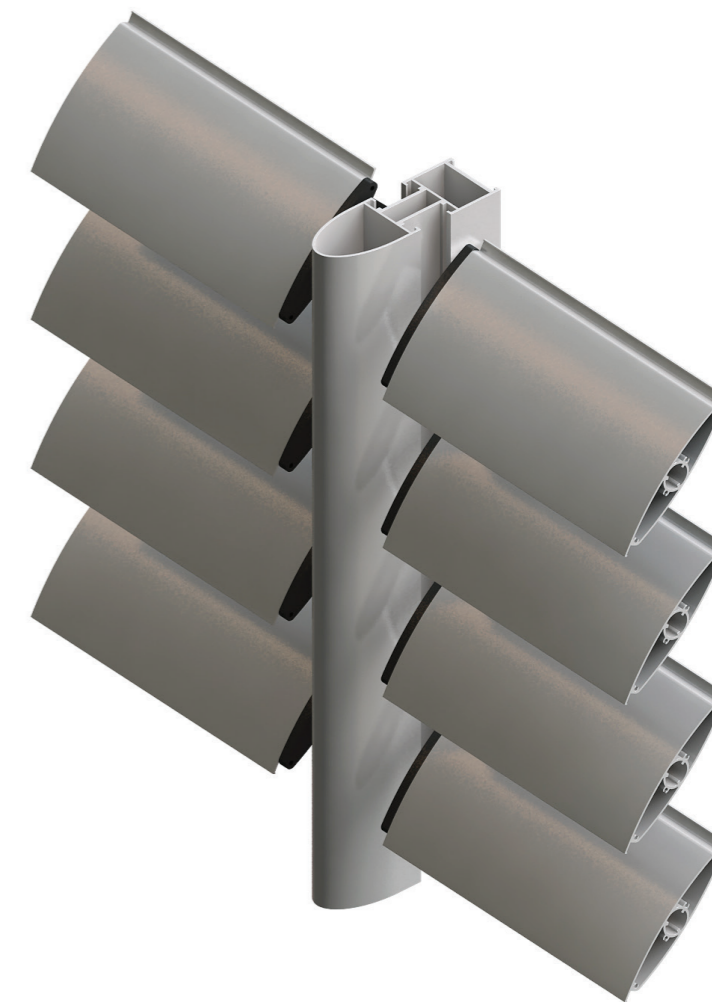
### Technical features:

Dimension of slats: 112,5, 118 and 149 mm



# FEAL SUN 55

## POKRETNI BRISOLEJI ADJUSTABLE SUN BREAKERS



### Tehničke karakteristike:

Montiranje lamela je vodoravno ili okomito  
Elektromotorni pogon  
Širina lamela: 140, 220, 290, 400 i 700 mm.  
Mogućnost automatskog podešavanja ovisno o kutu upada sunčevih zraka.

### Technical features:

Vertical or horizontal assembly of slats  
Electromotor drive  
Dimensions of slats: 140, 220, 290 and 400 mm.  
Slats are adjustable for regulation of luminous intensity inside the building.



**PREGRADNI SISTEMI | OGRADE**  
***PARTITION WALLS AND FENCES***

# PF-100 S

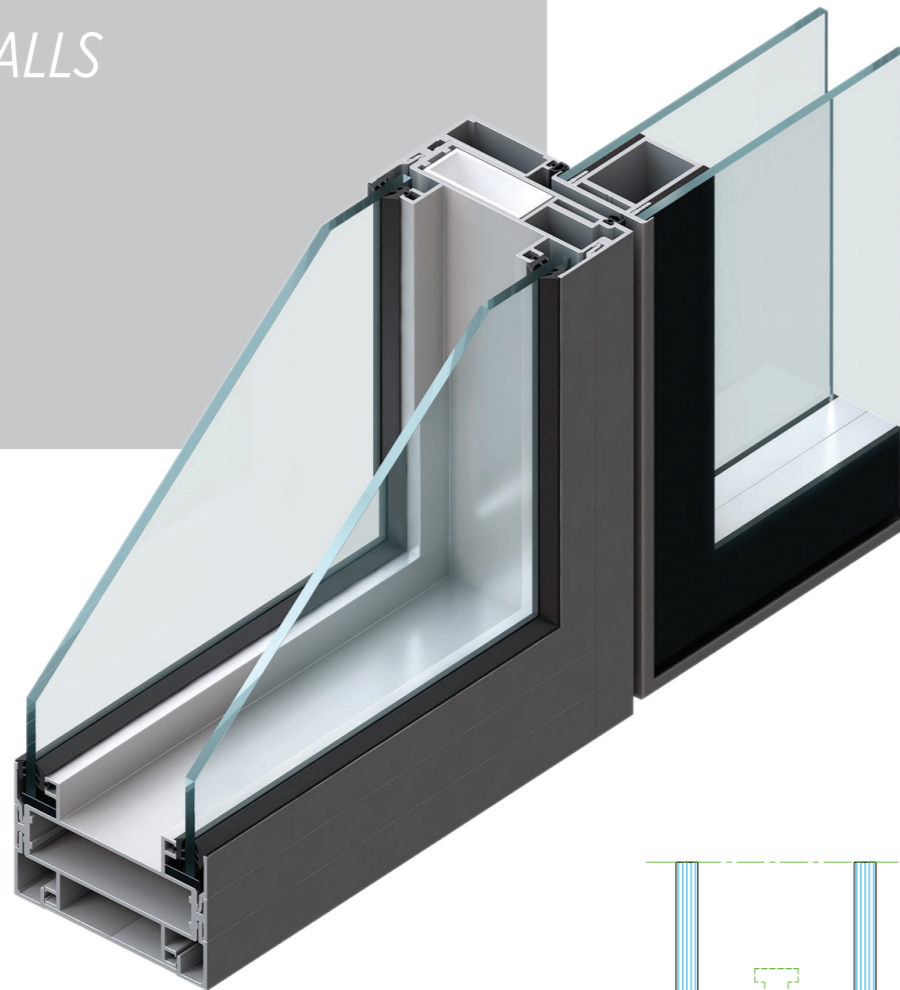
## PREGRADE PARTITION WALLS

### Tehničke karakteristike:

Dubina pregrade: 100 mm  
Dubina ispune: 4-11 mm  
Ugradnja na gotov pod

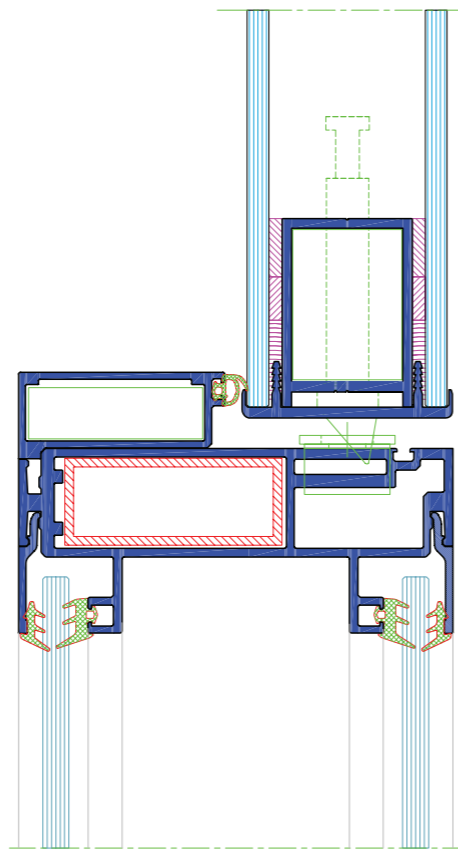
### Technical features:

Depth of partition: 100mm  
Depth of infill: 4-11mm  
Installation on the finished floor



Dio FEAL-ove ponude je uređivanje interijera. Kao osnovni proizvod te namjene je i pregrada serije PF-100. Dubina od 100 mm sa odgovarajućom ispunom u potpunosti će zadovoljiti u pogledu akustike i estetike modernih interijera. Primjena sustava PF-100 najpogodniji je za urede, banke, knjižnice i sve ostale prostorije u kojima se želi istaknuti veličina i luksuz prostora u kojem se boravi.

*A part of FEAL's offer is decoration of internal space/interior design. As basic product of such usage is partition wall of the PF-100 series. Depth of 100 mm with suitable infill will completely satisfy concerning the acoustic and aesthetic of the modern interiors. The PF-100 system is the most suitable for offices, banks, libraries and all other areas and spaces where we want to show the size and luxury of living.*



# MF-100

## MOBILNE STIJENE MOBILE WALLS

Pokretni zidovi MF-100 imaju mogućnost da unutrašnjost bilo kojeg prostora pretvore u veličinu ili oblik u skladu sa specifičnim zahtjevima i potrebama zadanog prostora. Ukoliko je potrebno vratiti prostoru prvobitni izgled pokretni zidovi se vrlo brzo i lako sklapaju. Na ovaj način se postiže multifunktionalnost u hotelima, konferencijskim salama, uredima tako što se velike prostorije pretvore u manje i obrnuto, a sve u cilju da se u potpunosti odgovori traženim zahtjevima kupaca.

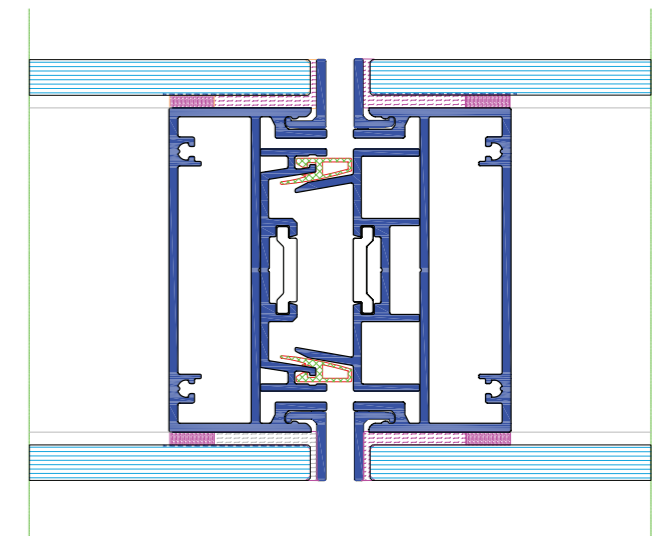
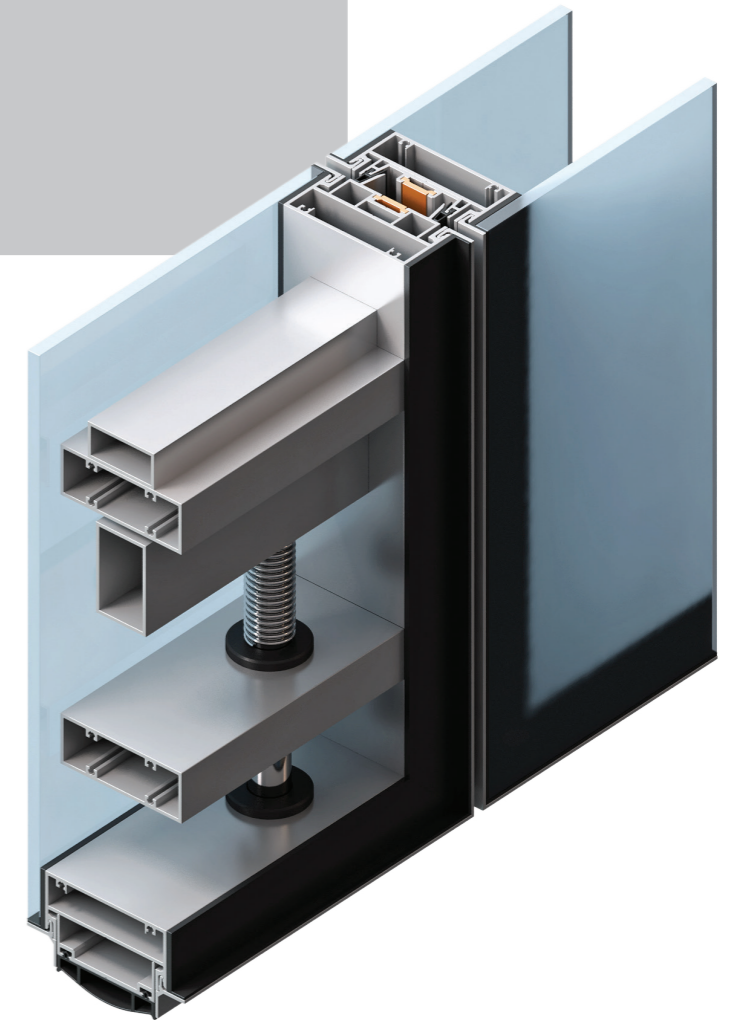
*Mobile or movable walls MF-100 have the ability that the interior of any space change into a size and shape according to the specific requirements and needs of a given area. If you need to restore the original look of the space mobile or movable walls are quickly and easily assembled. In this way we achieve multi functionality in hotels, conference halls, offices, such as changing the large room into a smaller and vice versa, in order to fully meet the specified requirements of our customers.*

### Tehničke karakteristike:

- primjena: pregrađivanje hala za sastanke, hodnika, ureda
- pokretanje pomoću kolica smještenih u gornjoj vodilici
- širina stijena 700-1300 mm
- debljina snopa 100 mm
- ispuna: drvo, staklo, gipsane ploče, itd.
- mogućnost ugradnje vrata
- slaganje krila stijena u boksove

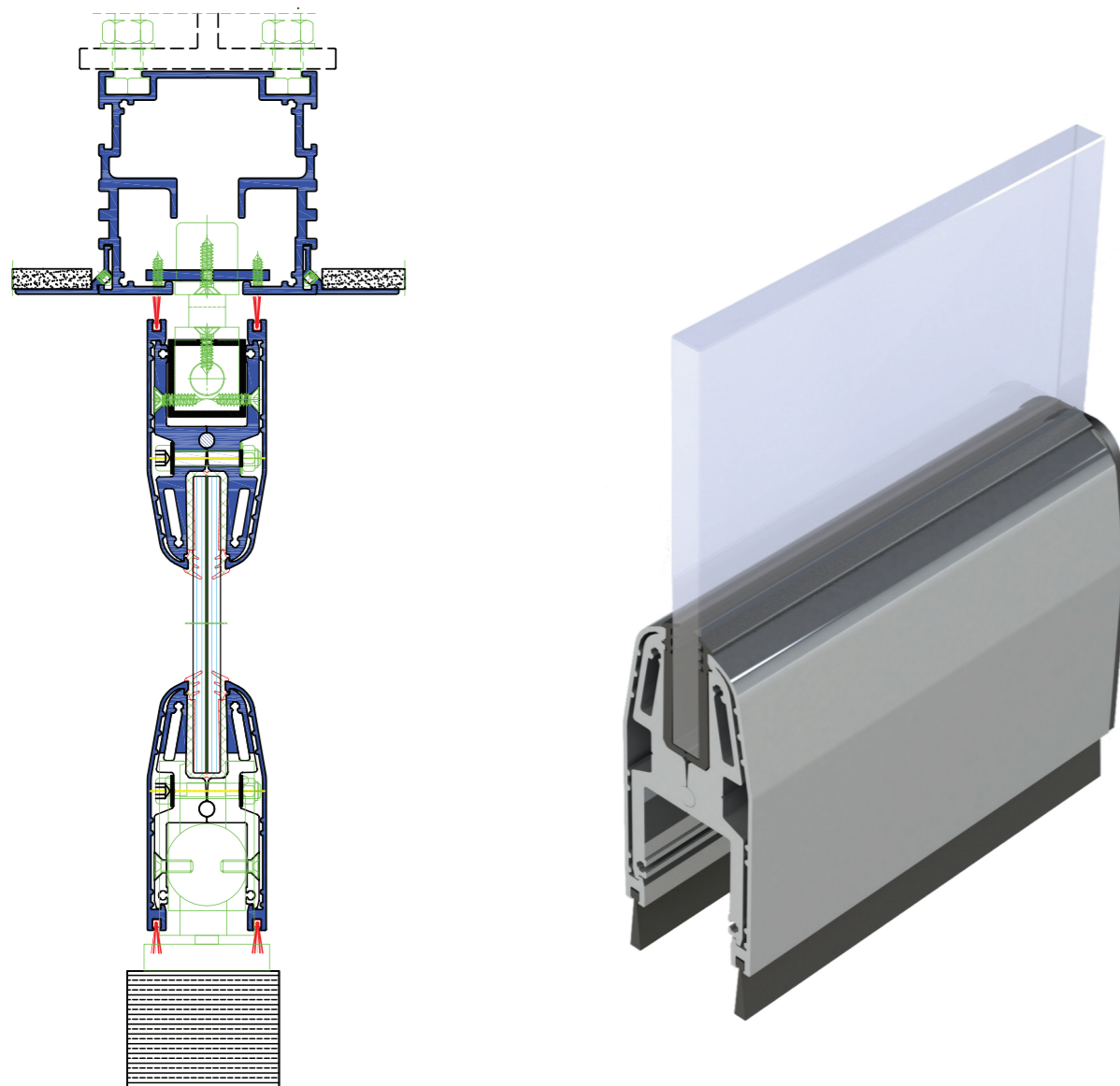
### Technical features:

- Application: rearrangement of meeting halls, hallways, offices
- Movement with wheels on rails located in the ceiling
- Wall width 700-1300 mm
- Stack thickness: 100 mm
- Fillings: wood, glass, gypsum board
- possibility of door installing
- possibility of wall stacking in special boxes



# MF-45

## STAKLENE MOBILNE STIJENE GLASS MOBILE WALLS



### Tehničke karakteristike:

Maksimalna visina elementa do 3000 mm.  
Maksimalna širina elementa do 1000 mm.  
Odlična svojstva kretanja i skoro beščujno upravljanje zahvaljujući visoko preciznim nosivim ležajevima.  
Minimalna upotreba sile za pokretanje staklenih elementa.  
Više načina pakiranja.  
Nije potrebna obrada stakla.

### Technical features:

Maximum height of the element up to 3000 mm.  
Maximum width of the element up to 1000 mm.  
Excellent motion properties and almost silent control thanks to high precision bearings.  
Minimal use of force necessary to move glass elements.  
More ways to pack.  
No glass processing is required.



# OF 60

## OGRADA FENCE

Aluminijske ograde su sustavi aluminijskih profila (šipki) i spojnih elemenata čijim kombinacijama dobivamo razne oblike i funkcijski prilagođene vrste ograde. Najčešće su to balkonske, stubišne ili ograde terasa. Aluminijski konstrukcijski dijelovi se mogu kombinirati sa staklom i drugim vrstama materijala za ispune, što znači da su mogućnosti izgleda i završne obrade velike. Također, boja i efekt površine su u potpunosti izbor naručitelja. Osim estetskih prednosti tu su jednostavna montaža, mala masa, sigurnost.

*Aluminium fences are systems made of aluminium profiles (bars) and fittings/binding elements which combined together can offer different fence solutions. These systems are commonly used for railings, terraces and balustrades. Aluminium construction profiles are combined with glass and other materials for infill which offers different shapes and designs of fences. Also, there is a wide range of available colors and finishes depending on customer's choice. Beside the aesthetic advantages, these systems are easily installed, light weight, have high safety characteristics and high corrosion resistance. Feal aluminium fences require minimum or no maintenance throughout a long period of time.*

### Zajedničke karakteristike:

- primarni aluminij, legure EN AW -6060
- površinska zaštita: eloksanje, plastificiranje i dekoracija postupkom sublimacije

### Tehničke karakteristike:

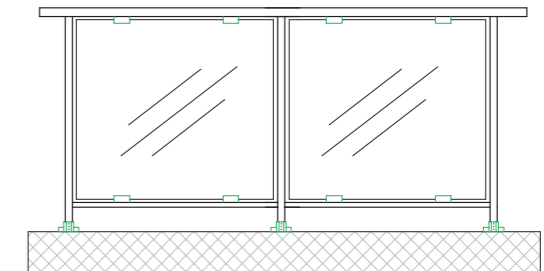
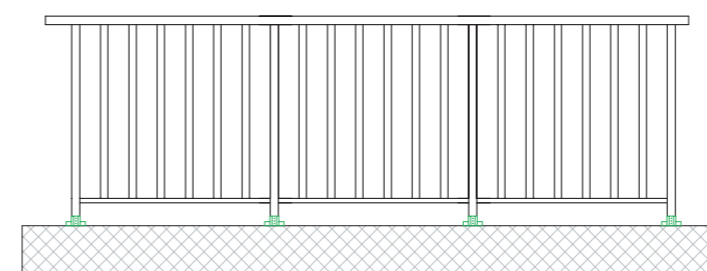
Elementi ispune:: lamele i staklo

### Common characteristics:

- primary aluminium, alloy EN AW - 6060
- surface protection with anodizing or powder coating and decoration with sublimation technology

### Technical features:

Infill elements: slats and glass



# OF 80

## OGRADA FENCE

Ograda OF 80 je inovativan sistem namjenjen brznoj i jednostavnoj izradi i montaži balkonskih i dvorišnih ograda konstruiran od međusobno spojenih aluminijskih profila. OF 80 odlikuje modularna izvedba, širok izbor lamela različitih dimenzija i oblika, visok stupanj sigurnosti i moderan izgled. Uz klasične fiksne ograde omogućena je izrada dvorišnih kliznih ili zaokretnih vrata.

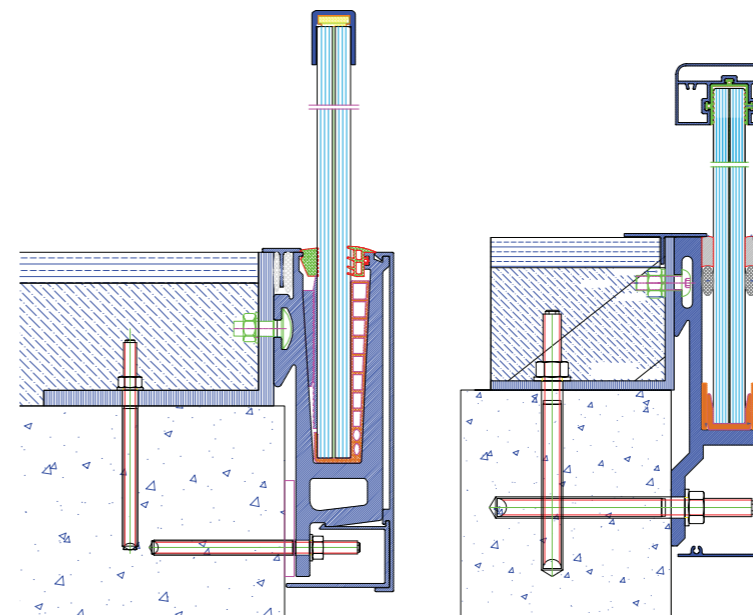
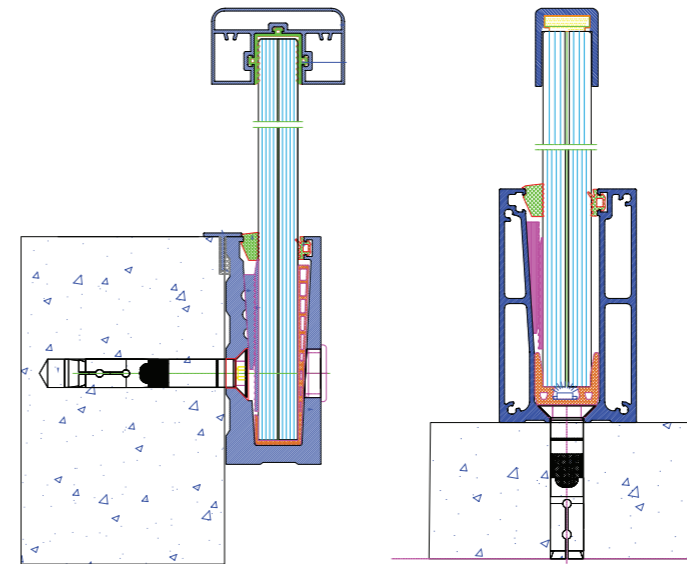
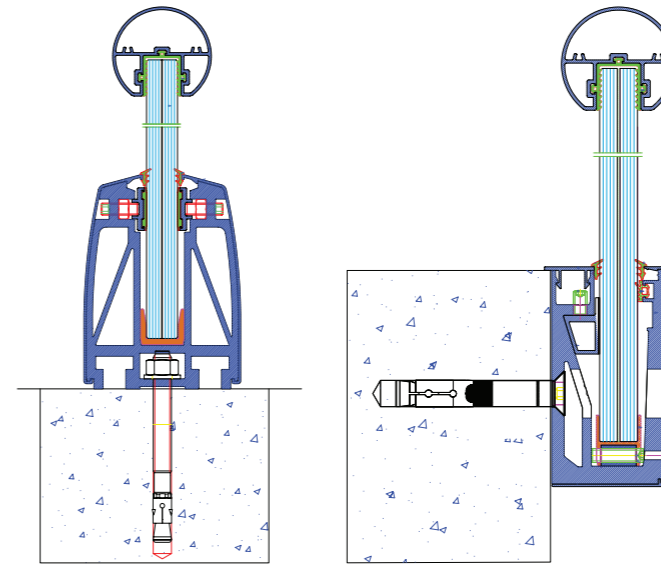
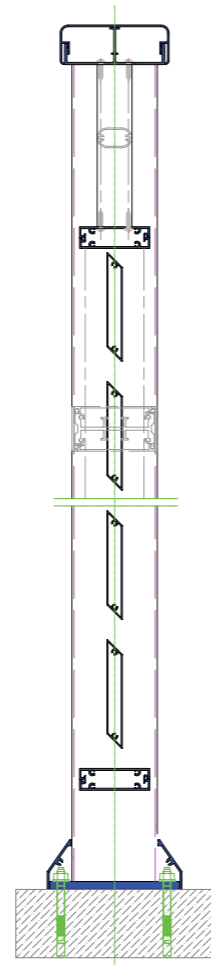
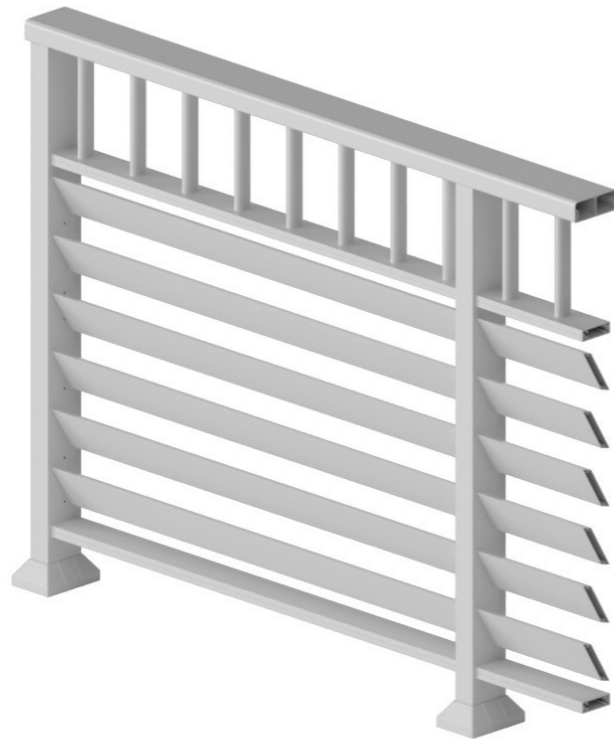
*The OF 80 fence is an innovative system intended for quick and easy production and installation of balcony and yard fences constructed from interconnected aluminum profiles. OF 80 is characterized by a modular design, a wide selection of slats of different sizes and shapes, a high degree of safety and a modern look. In addition to the classic fixed fences, it is possible to make patio sliding or revolving doors.*

### OF 80 odlikuje:

- Dugotrajnost i otpornost prema vremenskim utjecajima
- Atraktivnost i raznovrsnost rješenja kroz široku ponudu lamela
- Brza i jednostavna montaža
- Mogućnost jednostavne demontaže
- Skriveni spojevi profila
- Praktičnost i lako održavanje
- Sigurnost zahvaljujući profilima dizajniranim u skladu sa zahtjevima europskih normi
- Široka paleta boja prema RAL karti zajedno s različitim vrstama eloksaže
- Aluminijskih profila te imitacijama drveta ili kamena

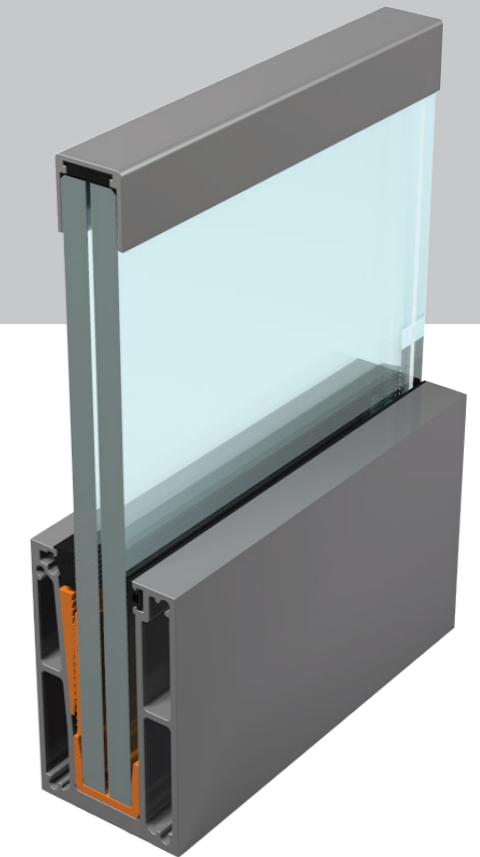
### OF 80 features:

- *Durability and resistance to weather influences*
- *Attractiveness and variety of solutions through a wide range of lamellae*
- *Quick and simple installation*
- *Possibility of easy disassembly*
- *Hidden profile joints*
- *Practicality and easy maintenance*
- *Safety, thanks to profiles designed in accordance with the requirements of European standards*
- *Wide range of colors according to RAL card together with different types of aluminum anodizing*
- *aluminum profiles and imitations of wood or stone*



# OF-100

## STAKLENA OGRADA GLASS FENCE



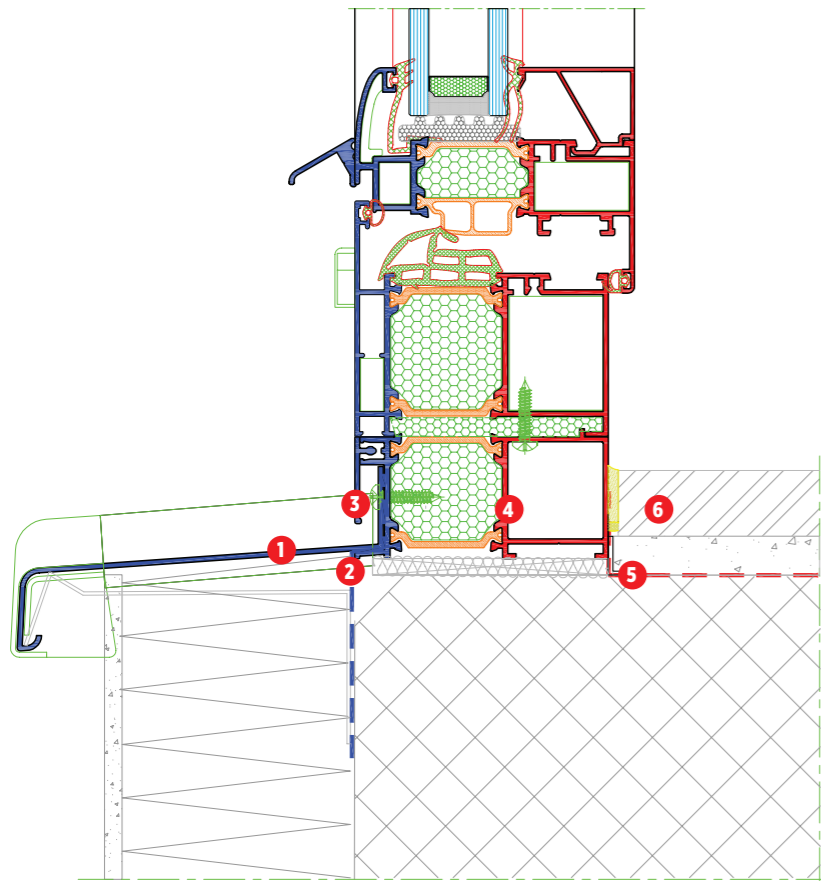
Staklena ograda s kontinuiranim vodilicama i stopama

*Glass railing with continuous and partial anchor profile*

# RAL UGRADNJA

## RAL INSTALLATION

PROZORI I VRATA S PREKINUTIM TERMIČKIM MOSTOM  
WINDOWS AND DOORS WITH THERMAL BREAK



1. aluminijska klupica  
*aluminium sill*
2. hidroizolacija (paropropusna i vodonepropusna traka)-za zaštitu toplinske izolacije od kapljevina s vana (npr. Knauf LDS 0.04)  
*hydro insulation (vapor permeable and watertight tape)-for protection of heat insulation from liquids from outside (e.g. Knauf LDS 0.04)*
3. profil-mask F-1552  
*profile-mask F-1552*
4. profil za ugradnju FT-0289HF  
*profile for mounting FT-0289HF*
5. parna brana (paro- i vodonepropusna traka)- za sprječavanje prolaska vodene pare iz prostorije u toplinsku izolaciju (npr.Knauf LDS 100)  
*vapor anitfuse (vapor and watertight tape)-for protection of vapor penetrating from room into thermal insulation (e.g.Knauf LDS 100) inside processing and finishing look*
6. unutarnja obrada i završni izgled  
*Internal processing and final appearance*

RAL UGRADNJA PROZORA najvećim dijelom cilja na pravilnu ugradnju i uštedu energije, kako bi se spriječile negativne pojave vlage i njene posljedice.

Prema RAL ugradnji treba osigurati:

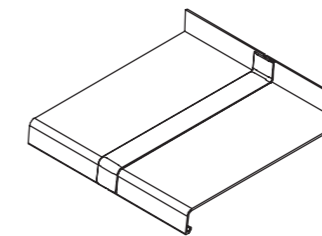
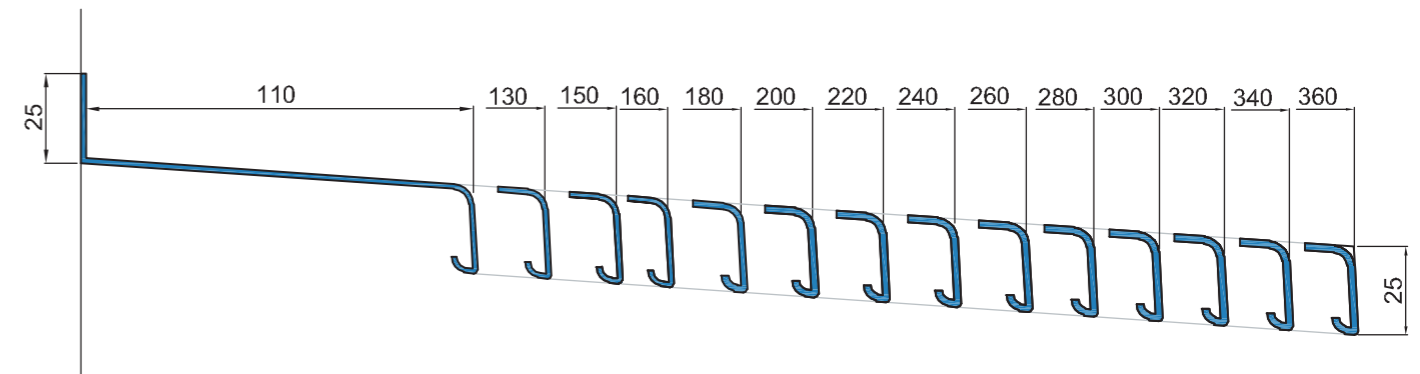
- spoj stolarije i zida (međuprostor) treba održati suhim
- prozor treba pozicionirati na pravilnu liniju izoterme
- naročito s unutarnje strane, treba spriječiti protok vodene pare u izolaciju (vodonepropusnost i paronepropusnost iznutra prema međuprostoru)
- s vanjske strane, treba spriječiti ulazak tekuće vode ili proboj kiše (vodonepropusnost izvana prema međuprostoru)
- osigurati nesmetani izlazak vodene pare iz međuprostora u atmosferu (paropropusnost iz međuprostora prema van)

*RAL WINDOW INSTALLATION mainly targets the proper installation and energy savings, in order to prevent the negative appearance of moisture and its consequences. According to the RAL installation should provide:*

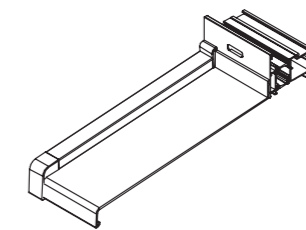
- *A combination of joinery and wall (gap) should be maintained dry*
- *Window should be positioned at the correct line of isotherms*
- *Especially the inside, should prevent the flow of water vapor in the insulation (water and vapor proofing from the inside to the interspace)*
- *From the outside should prevent the entry of liquid water or rain penetration (waterproofing outside to the interspace)*
- *to provide ease escape of the water vapor from the space between to the atmosphere (water vapor transmission from the space between to the outside)*

# PARAPETNE KLUPICE

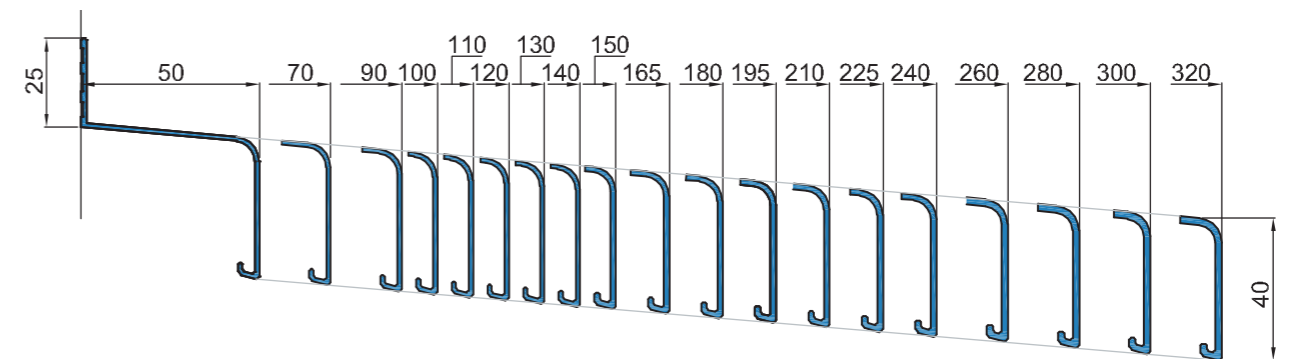
## WINDOW SILL PROFILES



Aluminijske spojnice  
*Aluminium connectors or clips*



Aluminijski čepovi  
*Aluminium caps or plugs*








### Tehničke karakteristike

- primarni aluminij, legure EN AW - 6060
- površinska zaštita: eloksiranje, plastificiranje i dekoracija postupkom sublimacije
- Standardna isporuka 6500 mm
- Mogućnost isporuke odgovarajućih aluminijskih čepova i aluminijskih spojnica uz klupičice

### Technical features:

- *primary aluminium, alloy EN AW - 6060*
- *surface protection with anodizing or powder coating and decoration with sublimation technology*
- *standard delivery 6500 mm*
- *possibility of delivery of suitable aluminium plugs or stoppers and aluminium connectors or clips with the sills*

## PROFILI OPĆE NAMJENE / GENERAL PURPOSE PROFILES

Pravokutne šipke / Rectangular profiles or bars	
Kvadratne šipke / Square profiles or bars	
Okrugle šipke / Circular profiles	
"L" profil / "L" profiles	
"T" profil / "T" profiles	
"U" profil / "U" profiles	
Cijevi / Pipe profiles	
Pravokutne cijevi / Rectangular pipe profiles	
Kvadratne cijevi / Square pipe profiles	

## OKAPNICE ZA DRVENE PROZORE / PROFILES FOR WOODEN WINDOWS

F-0057	F-0058	F-0085	F-0494	F-0496	F-0515
F-0516	F-0587	F-0604	F-0613	F-0615	F-0664
F-0670	F-0671	F-0693	F-0737	F-0613/A	F-0865
F-0806	F-0838	F-0881	F-0890	F-0879	F-0880
F-0602	F-0979	F-1071			

### Tehničke karakteristike:

- primarni aluminij, legure EN AW - 6060
- površinska zaštita: eloksiranje, plastificiranje i dekoracija postupkom sublimacije
- standardna isporuka 6500 mm

### Technical features:

- primary aluminium, alloy EN AW - 6060
- surface protection with anodizing or powder coating and decoration with sublimation technology
- Standard delivery 6500 mm



## CERTIFIKATI / CERTIFICATES



IFT ROSENHEIM



GBD BREGENZ



IGH ZAGREB



PHI DARMSTADT



ZAG LJUBLJANA

Vršimo ispitivanje kvalitete gotovih FEAL-ovih sistema u ovlaštenim institutima: IGH-Zagreb, IFT- Rosenheim, GBD Bregenz, PHI Darmstadt i ZAG Ljubljana.

We test the quality of finished Feal systems in accredited laboratories: IGH Zagreb, IFT-Rosenheim, GBD Bregenz, PHI Darmstadt and ZAG Ljubljana.

### Laboratorijsko ispitivanje aluminijskih građevinskih elemenata na:

- vjetrootpornost (EN 12210/1221 i 12179/13116)
- zrakopropusnost (EN 12207/1026 i 12153/12152)
- vodonepropusnost (EN 122210/1027 i 12155/12154)
- buka
- protuprovalnost
- termika izračuni gubitaka energije
- sila otvaranja na ručke (EN 12046-1)
- protupožarnost (DIN 1364-4)

### Laboratory testing of aluminium construction elements for:

- resistance to wind load (EN 12210/1221 and 12179/13116)
- air permeability (EN12207/1026 and 12153/12152)
- water tightness (EN 122210/1027 and 12155/12154)
- noise resistance
- anti theft
- thermic calculating of energy losses
- operating forces on handle (EN 12046-1)
- Fire resistance test (DIN 1364-4)

# LABORATORIJSKA ISPITIVANJA

## LABORATORY TESTING

# KONTAKT

## CONTACT



### Laboratorijsko ispitivanje aluminijskih građevinskih elemenata na FEAL-ovom test centru:

- vjetrootpornost (EN 12210/1221 i 12179/13116)
- zrakopropusnost (EN 12207/1026 i 12153/12152)
- vodonepropusnost (EN 122210/1027 i 12155/12154)
- sila otvaranja na ručke (EN 12046-1)

### Laboratory testing of aluminium construction elements at FEAL's test center:

- resistance to wind load (EN 12210/1221 and 12179/13116)
- air permeability (EN 12207/1026 and 12153/12152)
- watertightness (EN 122210/1027 and 12155/12154)
- operating forces on handle (EN 12046-1)

### BOSNA I HERCEGOVINA

#### FEAL d.o.o Široki Brijeg

Trnska cesta 146, 88220 Široki Brijeg  
Bosna i Hercegovina  
Tel: +387 39 704-269; 705-807; 705-636  
Fax: +387 39 704-358  
[info@feal.ba](mailto:info@feal.ba)

#### METALRAD

Trnska cesta 146, 88220 Široki Brijeg  
Bosna i Hercegovina  
Tel: +387 39 706-549  
Fax: +397 39 706-551; 702-761  
[metalrad@feal.ba](mailto:metalrad@feal.ba)

#### FE-AL Mostar

Bačevići bb, 88000 Mostar  
Bosna i Hercegovina  
Tel: +387 36 350-640; 350 642; 350 643  
Fax: +397 36 350-641  
[fe-al.mostar@feal.ba](mailto:fe-al.mostar@feal.ba)

#### FEAL RS Banja Luka

Pilanska bb, 78000 Banja Luka  
Bosna i Hercegovina  
Tel: +387 51 394-205; 394 - 206  
Fax: +387 51 394 - 207  
[banjaluka@feal.ba](mailto:banjaluka@feal.ba)

#### FEAL Sarajevo

Bačići 23, 71000 Sarajevo  
Bosna i Hercegovina  
Tel: +387 33 674-936  
Fax: +387 33 674-936  
[sarajevo@feal.ba](mailto:sarajevo@feal.ba)

### HRVATSKA

#### FEAL Hrvatska – Zagreb

Rudeška cesta 3a, 10000 Zagreb, Hrvatska  
Tel: +385 1 386-62-22  
Fax: +385 1 386-62-23  
[info@feal.hr](mailto:info@feal.hr)

#### FEAL Hrvatska – Split

Vjekoslava Paraća 12, 21231 Klis, Hrvatska  
Tel: +385 21 240-700  
Fax: +385 21 240-701  
[feal@feal.hr](mailto:feal@feal.hr)

#### FEAL Hrvatska – Trogir

Trogijska cesta 15, Plano, 21220 Trogir  
Hrvatska  
Tel: +385 21 797-601  
Fax: +385 21 797-603  
[trogir@feal.hr](mailto:trogir@feal.hr)

#### FEAL Hrvatska – Osijek

Jablanova 20, 31000 Osijek, Hrvatska  
Tel: +385 31 297-478  
Fax: +385 31 297-484  
[osijek@feal.hr](mailto:osijek@feal.hr)

#### FEAL Hrvatska – Zadar

Hrvatskog sabora 40, 23000 Zadar, Hrvatska  
Tel: +385 23 220-634  
Fax: +385 23 220-634  
[zadar@feal.hr](mailto:zadar@feal.hr)

#### FEAL Hrvatska – Rijeka

Mihovilčići 8/1, 51000 Rijeka, Hrvatska  
Tel: +385 51 257-555; 257-592  
Fax: +385 51 256-954  
[rijeka@feal.hr](mailto:rijeka@feal.hr)

### SRBIJA

#### FEAL Beograd

Naselje Ekonomije 1, br. 16A  
11273 Batajnica, Beograd, Srbija  
Tel: +381 11 4541 660  
[info@feal.rs](mailto:info@feal.rs)

### CRNA GORA

#### FEAL Crna Gora

Nikšićki put bb, 81000 Podgorica, Crna Gora  
Tel: +382 78 105-544  
Fax: +382 78 105-544  
[fealcg@t-com.me](mailto:fealcg@t-com.me)

### AUSTRIJA

#### FEAL Austria

Konrad-Doppelmayr-Strasse 17, 6922 Wolfurt, Österreich  
Tel: +43(0)5574-62230  
Fax: +43(0)5574-61989  
[info@feal.at](mailto:info@feal.at)

### NJEMAČKA

#### FEAL Deutschland

Kemptener Str. 99, 88131 Lindau, Deutschland  
Tel: +49(0)8382 504 9393  
Fax: +49(0)8382 504 9390  
[info@feal-deutschland.de](mailto:info@feal-deutschland.de)



**FEAL**

**PERFECTION IN ALUMINIUM**